

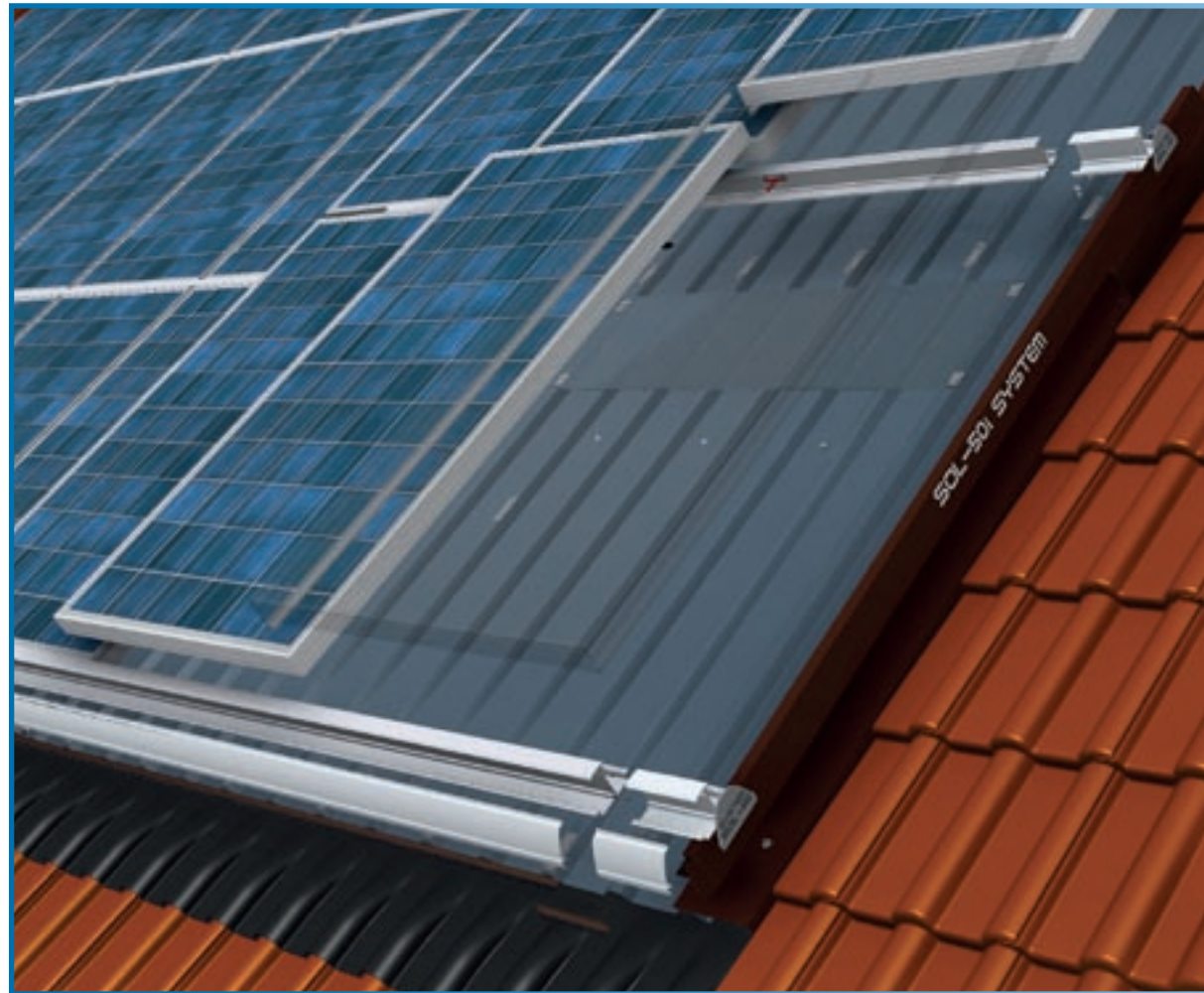
# SOL-50i IN-ROOF SYSTEM

Solar can look so good



## Technical data for in-roof system

<b>Suitable for:</b>	Roofing of pantiles, plain roofing tiles and natural or artificial slate
<b>Roof pitch:</b>	From 10°
<b>Static:</b>	Takes into account all snow loads and wind pressure zones Building height limited to max. 18.00 m Material requirement depends on location
<b>PV modules:</b>	Framed modules up to 50 mm frame height
<b>Module positioning:</b>	Horizontal and vertical
<b>Height adjustment:</b>	Not possible
<b>Materials:</b>	Trapezoidal aluminium sheets; Extruded aluminium frames (EN AW 6060/6063); Cover trims made of painted aluminium; Rust-proof steel screws
<b>Colour:</b>	Press finished, anodized and in all RAL colours



## Components

	Aluminium trapezoidal sheets		Horizontal frame
	Aluminium cover sheets		Horizontal frame end cap
	Aluminium upper corner pieces		Cover trim
	Lateral ending sheets		Clamp holders
	Bitumen band		Drilling screw connection trapezoidal sheet
	Frame filler		Self-tapping screw
	Eave roller		Vertical seal
			Ventilation profile