

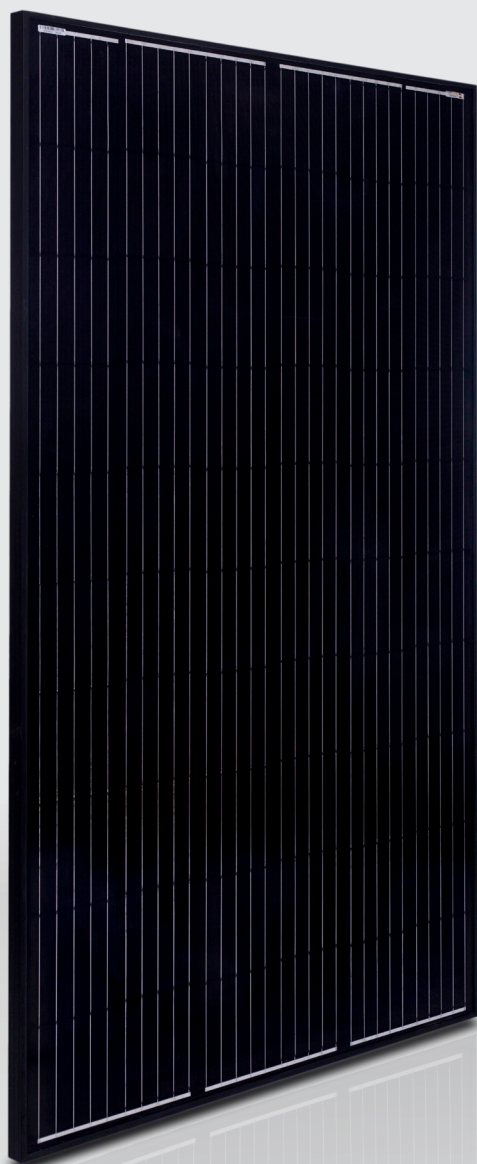
 Deutsche
 Qualität
 Garantiert



FULL BLACK

Driven by innovation

-  **60**
FULL CELLS
-  LID RESISTANT
-  PID RESISTANT
-  SALT CORROSION RESISTANT
-  SAND RESISTANT
-  AMMONIA RESISTANT
-  HIGHLY STABLE AND TOUGH

30
years
Performance Guarantee

15
years
Product Warranty

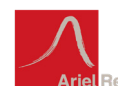
MONO-CRYSTALLINE PV MODULES
FULL CELLS • MONO-FACIAL

320W-330W
AE MB-60 Series



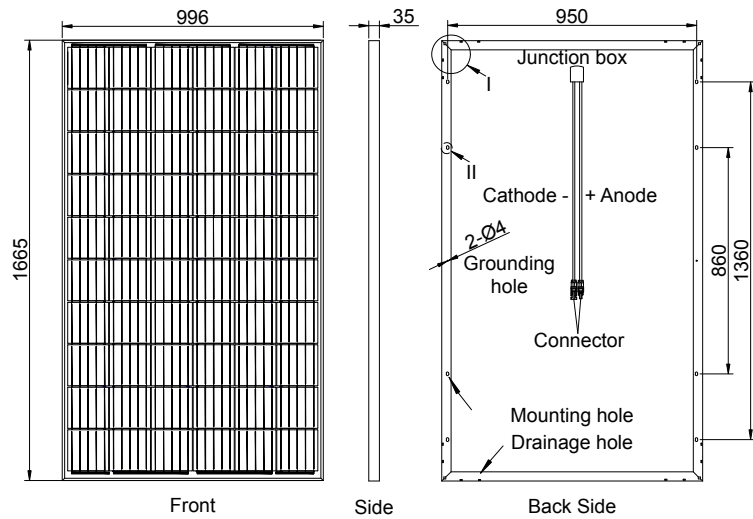
IEC 61215
IEC 61730
Regular Production Surveillance
Type Tested and Monitored

IEC 62716 (Ammonia corrosion)
IEC 61701 (Salt mist corrosion)
IEC 60068 (Sand and dust)
IEC 62804 (PID resistance)



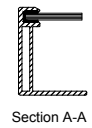
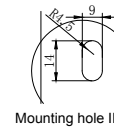
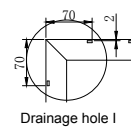
Mechanical and design specification

Cell type	Gallium-doped Mono c-Si PERC, Full cells, 158.75mm
No. of cells	60
Glass	3,2 mm, high transmission, AR coated, tempered
Encapsulation	EVA
Back cover	Black Backsheet
Junction box	IP 68 rated
Frame	35 mm anodized Aluminium alloy
Cable	1 x 4 mm ² , 350 mm length or customized
Connectors	MC 4 / MC 4 compatible
Dimension	1665 mm x 996 mm x 35 mm
Weight	18.5 kg
Hail resistance	Max. Ø 25 mm at 23 m/s
Wind load	2400 Pa/ 244 kg/ m ²
Mechanical load	5400 Pa/ 550 kg/ m ²



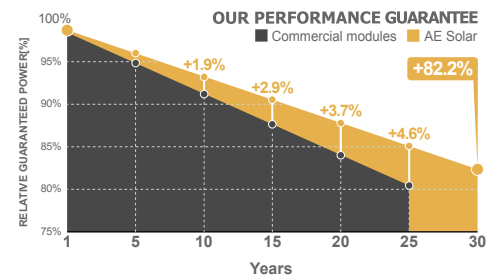
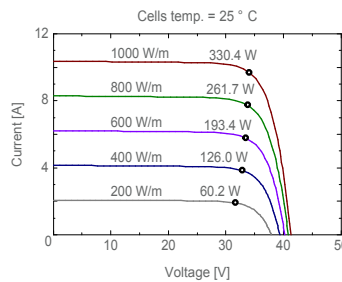
Packaging information

Packaging configuration	64 pcs / double pallet
Loading capacity	896 pcs / 40 HQ
Size / Pallet	1695 mm x 1135 mm x 2395 mm
Weight	1283 kg / double pallets



Temperature ratings

Operating temperature	(°C)	-40 to +85
Temp.coefficient of P _{max}	(%/°C)	-0.37
Temp.coefficient of V _{oc}	(%/°C)	-0.28
Temp.coefficient of I _{sc}	(%/°C)	0.048
Nom. operating temp. NOCT	(°C)	45 ± 2



Electrical specifications (STC*):	AE320MB-60	AE325MB-60	AE330MB-60	
Nominal Max. Power	P _{max} (Wp)	320	325	330
Maximum operating voltage	V _{MPP} (V)	33.40	33.61	33.81
Maximum operating current	I _{MPP} (A)	9.59	9.68	9.76
Open-circuit voltage	V _{oc} (V)	40.90	41.10	41.31
Short-circuit current	I _{sc} (A)	10.15	10.20	10.37
Module efficiency	η (%)	19.30	19.60	19.90
Power tolerance	(W)		0~+5	
Maximum system Voltage	(V)		1500	
Maximum series fuse rating	(A)		15	

*STC: Standard test conditions (Irradiance 1000 W/m², Cell temperature 25°C and air mass of AM1.5)

Electrical specifications (NMOT*):	AE320MB-60	AE325MB-60	AE330MB-60	
Nominal Max. Power	P _{max} (Wp)	245	248	252
Maximum operating voltage	V _{MPP} (V)	31.60	31.80	32.00
Maximum operating current	I _{MPP} (A)	7.74	7.81	7.88
Open-circuit voltage	V _{oc} (V)	37.90	38.10	38.30
Short-circuit current	I _{sc} (A)	8.16	8.30	8.39

*NMOT: Normal Module Operating Temperature (Irradiance 800 W/m², Ambient temperature 20°C, air mass of AM1.5 and wind speed of 1 m/s)

The specifications and characteristics contained in this datasheet may deviate slightly from our actual products due to the product developments and uncertainty of measurement devices. The specifications included in the datasheet are subject to change without prior notice.

