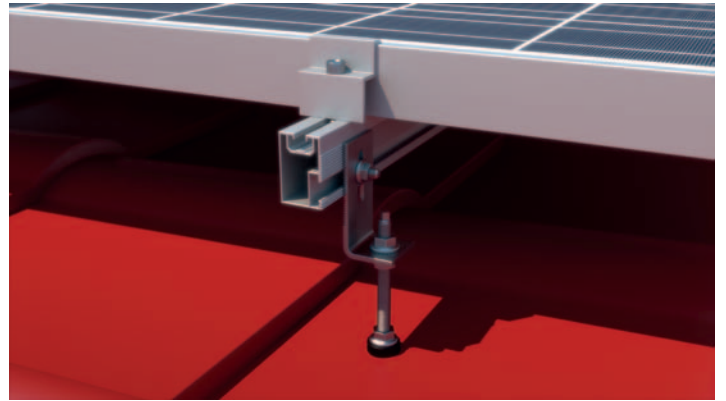
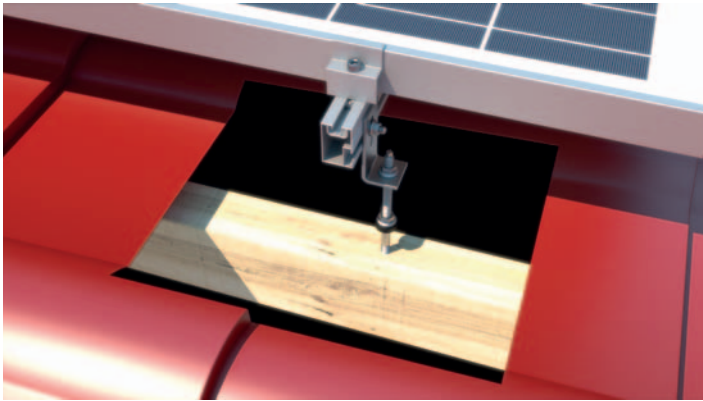
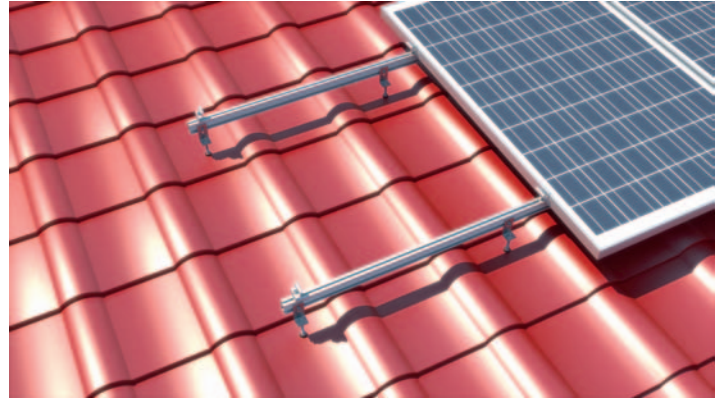


SYSTEM REM-07 VERTICAL

METAL ROOF / ETERNIT ROOF



Art. 0109
Mounting Rail
 Measurements: 31x50
 Length: 6200mm, 3100mm, 2070mm
 Joining screws
 top: M8
 side: M8/M10/M12
 Material: AL 6060T6



Art. 0121
Hanger Bolt
 With nuts and EPDM sealing washer
 M10 160 ÷ 300
 M12 200 ÷ 400
 Use with Art. 0122 or Art. 045
 Use: metal roof/eternit roof
 Material: A2 1.4301 stainless steel



Art. 0129
Hammerhead screws 28/15
 Measurements:
 M8 16 ÷ 70
 M10 16 ÷ 100
 Use: Mounting Rail Art. 0110
 Material: A2 1.4301 stainless steel



Art. 0134
Hexagon flange nuts with serration
 DIN 6923
 M6
 M8
 M10
 M12
 Material: 1.4301 A2



Art. 0132
Hexagon socket cap screws DIN 912
 with serration
 M8 12 ÷ 60
 Material: A2 1.4301 stainless steel



Art. 080
T-slot nuts, self aligning with spring ball
 M8
 Used with hexagon socket cap screw
 Art. 0132
 Use: for Mounting Rails Art. 0109, Art. 0110, Art. 062, Art. 0111, Art. 0112
 Material: AL 6060T6



Art. 0147
Click
 M8
 Material: Aluminium
 for rails: Art. 0109, Art. 0111



Art. 073
Middle Clamp
 Length: 50mm (standard)
 Length: 60mm – 100mm
 Height: 30mm
 Thickness: 3mm
 Colors: plain aluminium/black
 Material: AL 6060T6



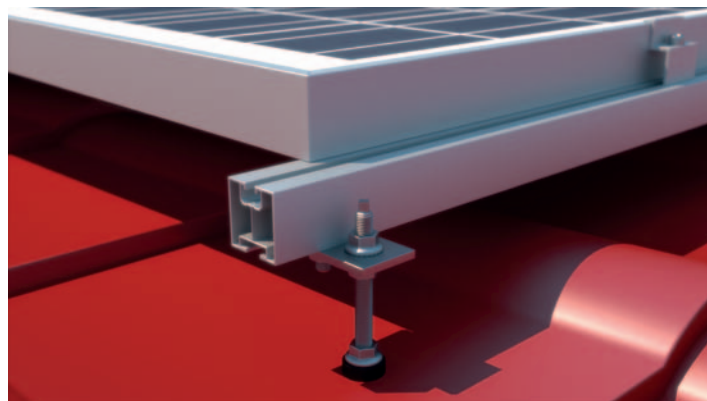
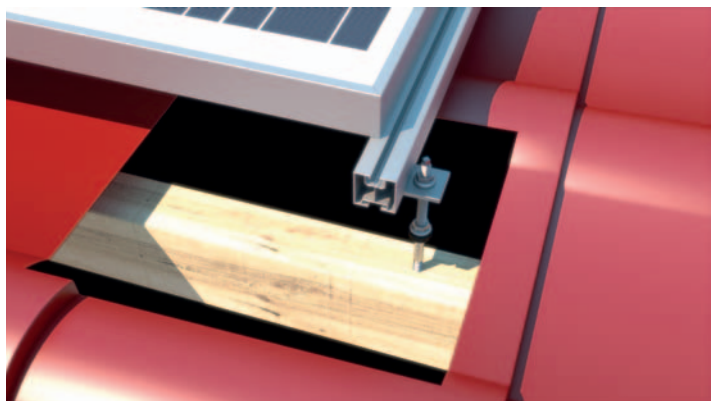
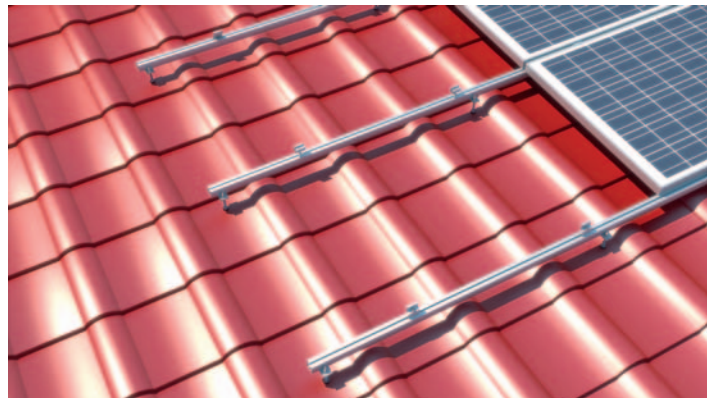
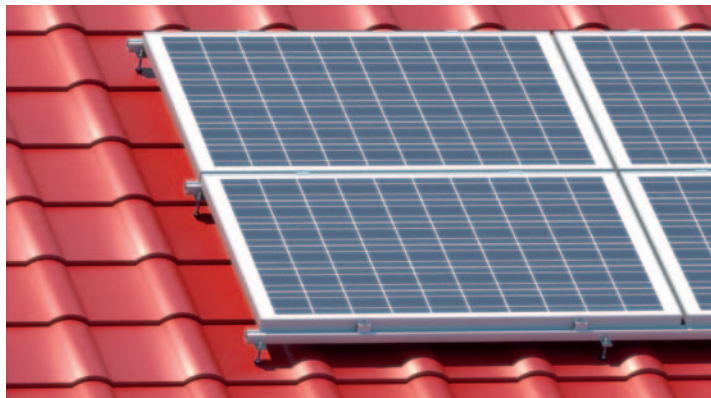
Art. 075
End clamp
 Length: 50 (standard)
 Length: 70mm
 Height: from 30mm to 50mm
 Thickness: 3mm
 Colors: plain aluminium/black
 Material: AL 6060T6



Art. 0122
Bracket M10
 (X1) Hole M10 or M12
 (x1) long Hole M8
 Use with Art. 0121
 Material: A2 1.4301 stainless steel

SYSTEM REM-07 HORIZONTAL

METAL ROOF / ETERNIT ROOF



Art. 0111

Mounting Rail 40 type I
Measurements: 40x40
Length: 6200mm, 3100mm, 2070mm
Joining screws: top M8, bottom M10
Material: AL6060T6



Art. 0121

Hanger Bolt
With nuts and EPDM sealing washer
M10 160 ±300
M12 200 ±400
Use with Art. 0122 or Art. 045
Use: metal roof/eternit roof
Material: A2 1.4301 stainless steel



Art. 0129

Hammerhead screws 28/15
Measurements:
M8 16 ±70
M10 16 ±100
Use: Mounting Rail Art. 0110
Material: A2 1.4301 stainless steel



Art. 0134

**Hexagon flange nuts with serration
DIN 6923**
M6
M8
M10
M12
Material: 1.4301 A2



Art. 0132

**Hexagon socket cap screws DIN 912
with serration**
M8 12±60
Material: A2 1.4301 stainless steel



Art. 080

**T-slot nuts, self-aligning with spring ball
M8**
Used with hexagon socket cap screw
Art. 0132
Use: for Mounting Rails Art. 0109, Art.
0110, Art. 062, Art. 0111, Art. 0112
Material: AL 6060T6



Art. 0147

Click
M8
Material: Aluminium
for rails: Art. 0109, Art. 0111



Art. 073

Middle Clamp
Length: 50mm (standard)
Length: 60mm – 100mm
Height: 30mm
Thickness: 3mm
Colors: plain aluminium/black
Material: AL 6060T6



Art. 075

End clamp
Length: 50 (standard)
Length: 70mm
Height: from 30mm to 50mm
Thickness: 3mm
Colors: plain aluminium/black
Material: AL 6060T6



Art. 0145

Mounting plate
(X1) Hole M10 / M12
(x1) Hole M10
Use with Art. 0121
Material: A2 1.4301 stainless steel