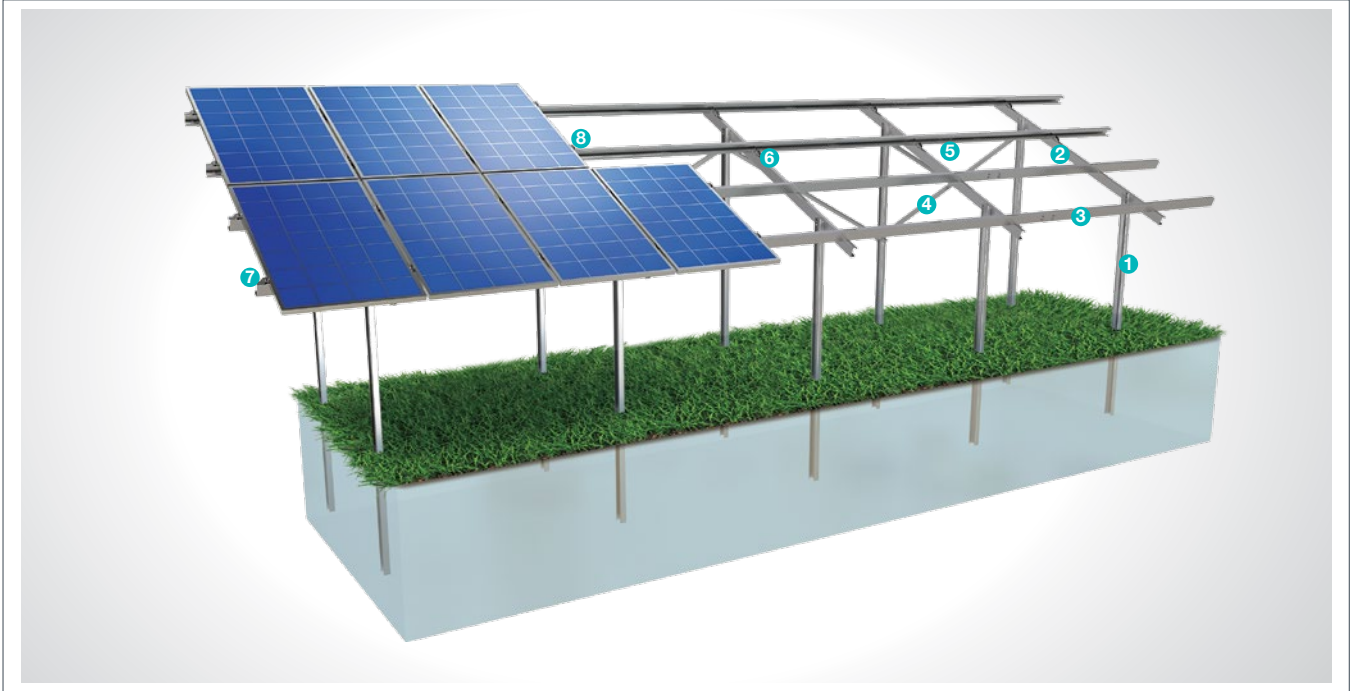


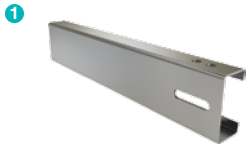
## (KPT1) Ground Driven Steel Mounting System with 2 Vertical Panels

### Overview

**KPT1**, is a ground driven steel support and mounting system with 2 vertical panels for open terrain solar panels. The system is an optimal application solution for installations of PV projects on large and medium-sized terrains . After manufacturing the system components with high-technology machines and equipment, an excellent corrosion resistance is then achieved through hot-dip galvanized coating. The system, incorporating a high-level engineering design, provides assembly and cost advantages.



#### STEEL COLUMN



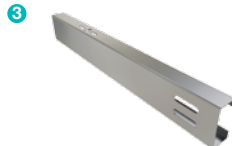
- **CK-90 / CK-100 / CK-120**  
M12X30 Knurled Bolt  
M12 Flanged Nut  
M12 Washer

#### STEEL BEAM



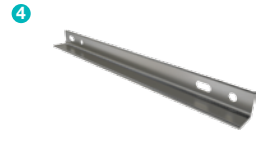
- **CR-100 / CR-120**  
M12X30 Knurled Bolt  
M12 Flanged Nut  
M8X30 Knurled Bolt  
M8 Flanged Nut  
M8/M12 Washer

#### STEEL PURLIN



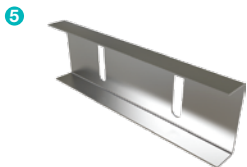
- **CA-90 / CA-100 / CA-110**  
M12X30 Knurled Bolt  
M12 Flanged Nut  
M8X30 Knurled Bolt  
M8 Flanged Nut  
M8/M12 Washer

#### STEEL L BRACKET



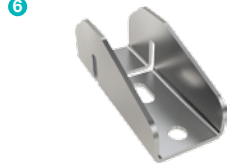
- **CL-40X40 / CL-50X50**  
M12X30 Knurled Bolt  
M12 Flanged Nut  
M12 Washer

#### PURLIN CONNECTOR JOINING PIECE



- **C90 / C100 / C110**  
M12X30 Knurled Bolt  
M12 Flanged Nut  
M12 Washer

#### PURLIN CONNECTOR



- **U40**  
M8X30 Knurled Bolt  
M8 Flanged Nut  
M8 Washer

#### PANEL SIDE RETAINER



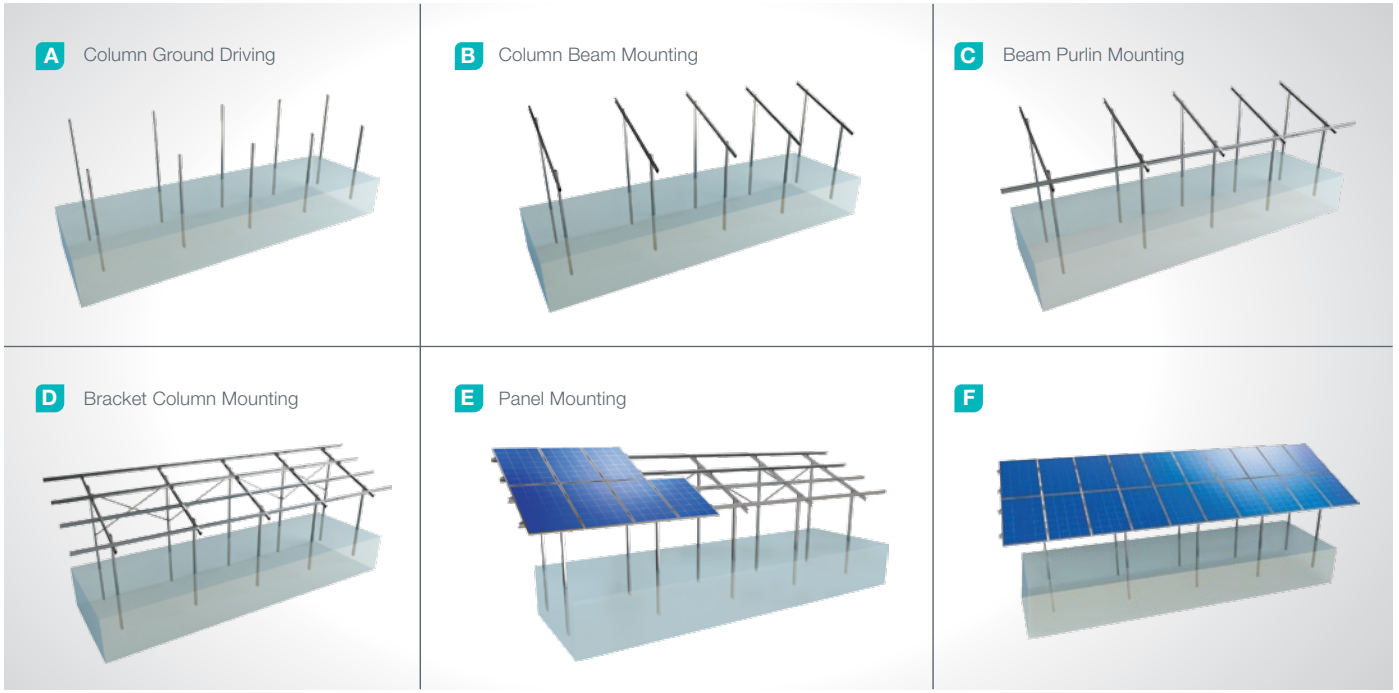
- **H30-H32-H40**  
M8X30 Hex Bolt  
M8 Flanged Nut

#### PANEL CENTER RETAINER



- **L70**  
M8X30 Hex Bolt  
M8 Flanged Nut

## Installation Phase



## Advantages

- Time saving for installation
- Cost saving for installation
- Flexible solutions for different types of terrains
- Suitable solutions for combiner box and inverter installation
- Tailored design solutions for customer
- Customer oriented engineering solutions

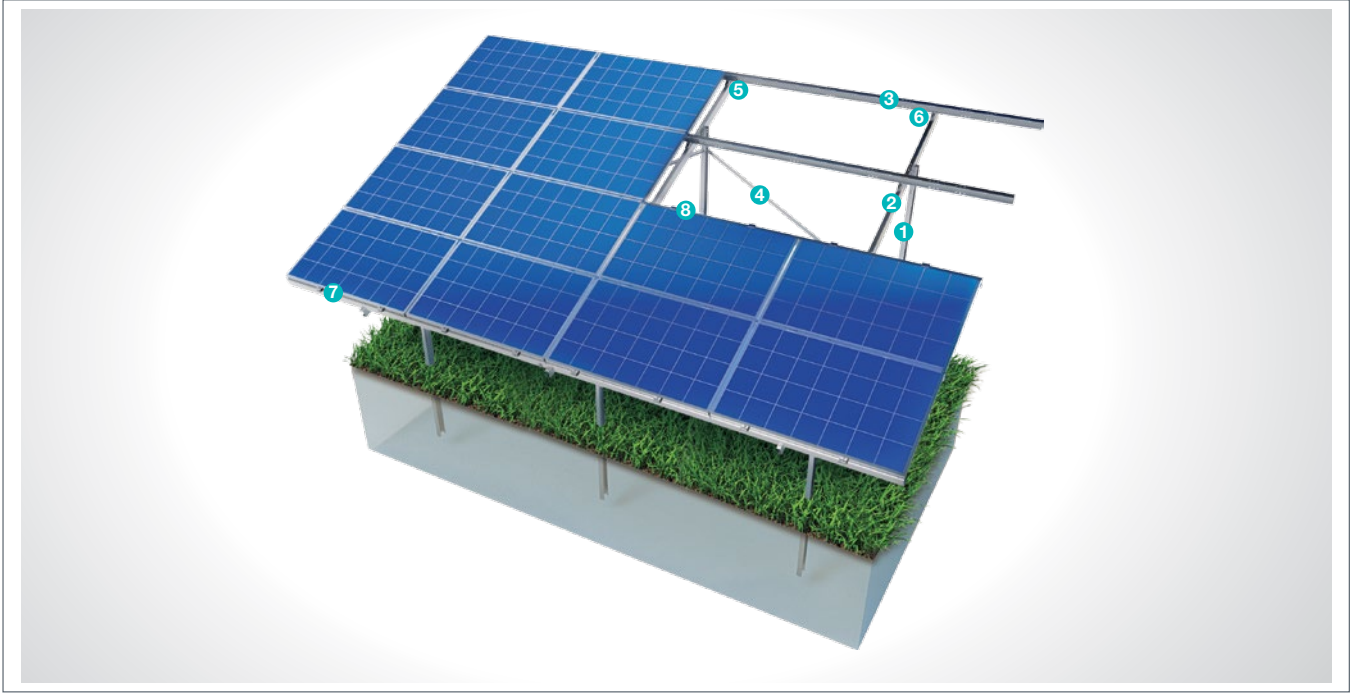
## Technical Specifications

Description:	(KPT1) Ground Driven with 2 Vertical Panel Driving Steel Mounting System
Mounting Method:	Ground Driving
Tilt Angle:	0-60 degrees
Module Application:	Framed and Unframed
Panel Height From Ground:	60 cm
Column and Beam Coating:	EN ISO 1461
Column and Beam Material:	EN 10025 / EN 10029
Optional Beam Material:	EN 10346
Panel Retainer:	EN AW 6063
Connector Equipment:	DIN 934 / DIN933 / DIN 912, A2-70 DIN 50979

## (KPT2) ) Ground Driven Steel Mounting System with 4 Horizontal Panels

### Overview

KPT2, is a ground driven steel support and mounting system with 4 horizontal panels for open terrain solar panels. The system is an optimal application solution for installations of PV projects on large and medium-sized terrains . After manufacturing the system components with high-technology machines and equipment, an excellent corrosion resistance is then achieved through hot-dip galvanized coating. The system, incorporating a high-level engineering design, provides assembly and cost advantages.



#### STEEL COLUMN



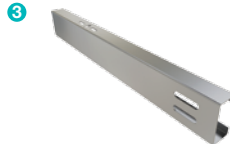
- **CK-90 / CK-100 / CK-120**  
M12X30 Knurled Bolt  
M12 Flanged Nut  
M12 Washer

#### STEEL BEAM



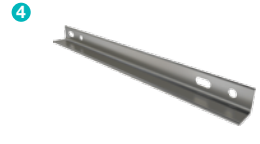
- **CR-100 / CR-120**  
M12X30 Knurled Bolt  
M12 Flanged Nut  
M8X30 Knurled Bolt  
M8 Flanged Nut  
M8/M12 Washer

#### STEEL PURLIN



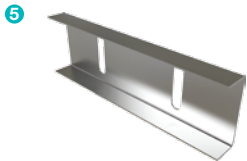
- **CA-90 / CA-100 / CA-110**  
M12X30 Knurled Bolt  
M12 Flanged Nut  
M8X30 Knurled Bolt  
M8 Flanged Nut  
M8/M12 Washer

#### STEEL L BRACKET



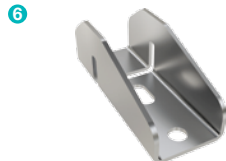
- **CL-40X40 / CL-50X50**  
M12X30 Knurled Bolt  
M12 Flanged Nut  
M12 Washer

#### PURLIN CONNECTOR JOINING PIECE



- **C-90 / C-100 / C-110**  
M12X30 Knurled Bolt  
M12 Flanged Nut  
M12 Washer

#### PURLIN CONNECTOR PIECE



- **U40**  
M8X30 Knurled Bolt  
M8 Flanged Nut  
M8 Washer

#### PANEL SIDE RETAINER



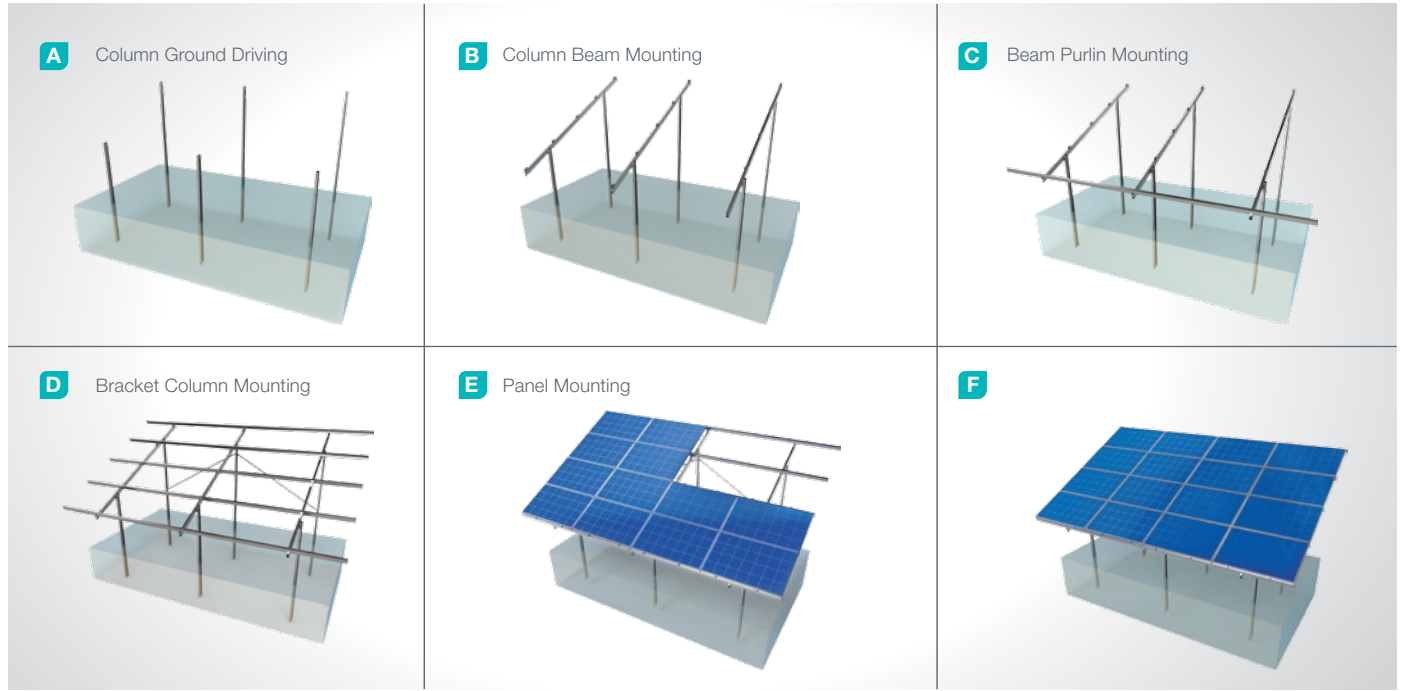
- **H30-H32-H40**  
M8X30 Hex Bolt  
M8 Flanged Nut

#### PANEL CENTER RETAINER



- **L70**  
M8X30 Hex Bolt  
M8 Flanged Nut

## Installation Phase



## Advantages

- Time saving for installation
- Cost saving for installation
- Flexible solutions for different types of terrains
- Suitable solutions for combiner box and inverter installation
- Tailored design solutions for customer
- Customer oriented engineering solutions

## Technical Specifications

Description:	(KPT2) Ground Driven with 4 Horizontal Panels Steel Mounting System
Mounting Method:	Ground Driving
Tilt angle:	0-60 degrees
Module Application:	Framed and Unframed
Panel Height From Ground:	60 cm
Column and Beam Coating:	EN ISO 1461
Column and Beam Material:	EN 10025 / EN 10029
Optional Beam Material:	EN 10346
Panel Retainer:	EN AW 6063
Connector Equipment:	DIN 934 / DIN933 / DIN 912, A2-70 DIN 50979