

SOLAR SERVICES

OUR ENGINEERING OFFICE

FREE TRAINING

an assistance offered on our product to launch your first project (either on-site or via skype).

AN IN DEPTH-STUDY OF YOUR PROJECT

our R&D department can offer you a **custom-made product**. Our expert engagement is to make you an offer within 48 hours.

AN OPTIMIZED STUDY

detailed plans are made to answer all projects requirements, our expertise's will ensure our solution is perfectly adapted to the building site constraints and to all regulatory requirements.

A PRIVILEGED ASSISTANCE

Our team provide an assistance through all needed procedures in particular if your project requires some validation by the Inspection office.

THE SOLAR CLUB SERVICE

As a Dome Solar customer, you can access freely, the SOLAR CLUB SERVICE in order to get some added services and many privileges.

NOTA

📍 | Dome Solar - 3 rue Marie Anderson
44 400 Rezé

☎ | Tél. +33 (0)2 40 67 92 92

✉ | info@dome-solar.com

www.dome-solar.com

OUR PARTNERS

ROOF SOLAR TILTED PVC

PVC WATERPROOF
MEMBRANE

FLAT ROOFS RANGE

ROOF-SOLAR BITUMEN

ROOF-SOLAR TILTED BITUMEN

ROOF-SOLAR EPDM

ROOF-SOLAR PVC

ROOF-SOLAR TILTED PVC

ROOF-SOLAR TPO

ROOF-SOLAR TILTED TPO

Document printed in France, with vegetable inks, on paper from sustainably managed forests, by Goubault Imprimeur certifié ISO 14001. DANZÉ®



DOME
SOLAR
PHOTOVOLTAIC MOUNTING SOLUTIONS

THE SOLUTION

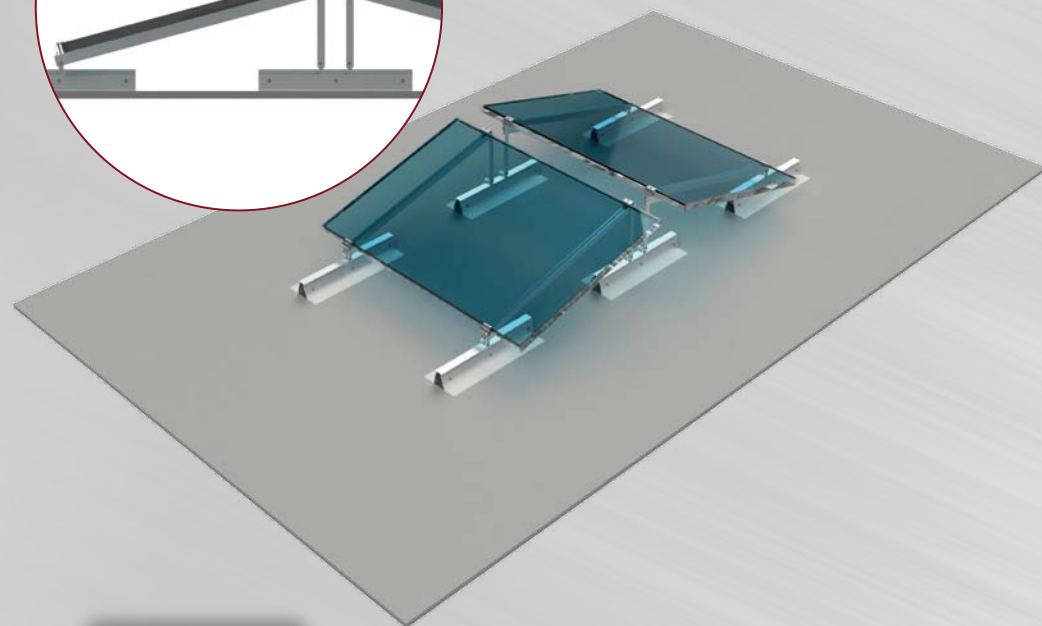
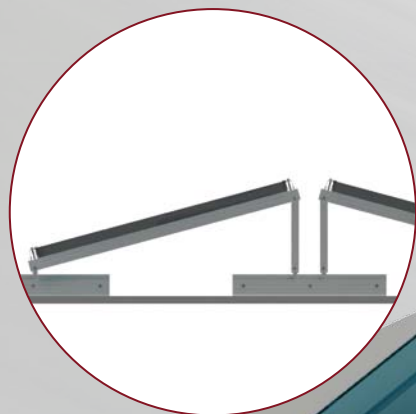
ROOF-SOLAR TILTED PVC is a photovoltaic mounting system on a waterproofing synthetic PVC membrane, without drilling of the membrane, in a tilted version.

QUALITY

Sturdy and reliable solution manufactured with premium components made of aluminum.

SIMPLICITY

The fastening system does not require perforating the insulation, fastens directly onto the sealant membrane by means of heat welding. The tilting structure can be assembled before roof mounting, it is light, very handy and attaches to the rail in just a few seconds.



ETN

Assessment
of New
Techniques

MADE IN FRANCE

ROOF SOLAR TITLED PVC

TECHNICAL CHARACTERISTICS

USE CONDITIONS

Closed building, new or renovated roof, total or partial covering

TYPE OF SUPPORT

Concrete, ribbed steel sheets, wood
C class compressibility insulation
PVC waterproofing synthetic coating (min. 1.5 mm)

MODULE POSITION

Landscape mode

MATERIALS

Aluminum, stainless steel and PVC

SYSTEM WEIGHT

4 kg/m² excluding the module

SYSTEM COMPONENTS

1.2 m or 0.6 m aluminum rail equipped with support bands, "Y" rail, aluminum flat section (for inclination of up to 15°), external clamp with an aluminum/stainless steel finish, Rail Grounding Connector, cable guide

OPTIONS

Module Grounding Connector

www.dome-solar.com