



KEY FEATURES

Solar Cells: high efficiency solar cells ensure high performance of the solar module and create maximum power output. PID FREE.

Front: High-transmission (over 95%)3.2mm tempered glass: **Back:** TPT or KPF; **Encapsulation:** EVA.

Aluminum Frame: screw-less corner joints provide superior rigidity, ten predrilled mounting holes ease installation.

Superior Junction Box: Multi function junction box with water proof capabilities.

Under 10% decrease of output power within 10 years and 20% decrease in 25 years.

Tolerance: 0~+2%.

High impact resistance affords superior performance during severe weather-high wind, driving rain, heavy snow and hail.

Moisture proof and corrosion-resistant.

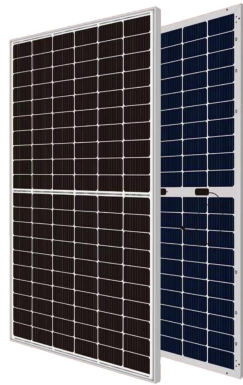
Widely used in various electric appliances and instruments in the area, such as grid net,home power system, telecommunications,illumination,transportation

Mono Bifacial Solar Module (Double Glass)

Mono 120 Half Cells (182mm cells)

Allesun-(440-450)-60IIMBG

Allesun's photovoltaic modules are designed for large-scale electrical power requirements, with a 25 years warranty, offers high-power and reliable performance for solar projects, both on and off-grid. Comprehensive LID/LeTID Mitigation, up to 50% down degradation.



PRODUCT CERTIFICATES



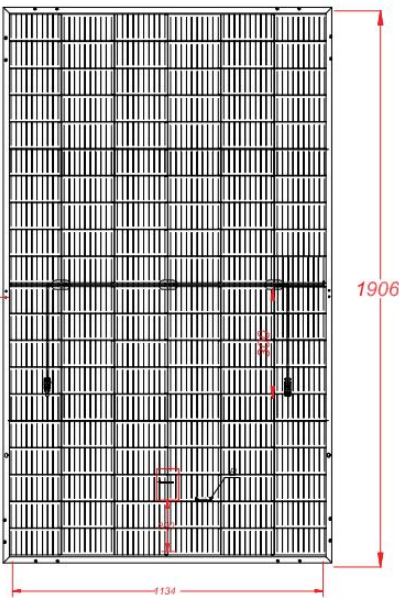
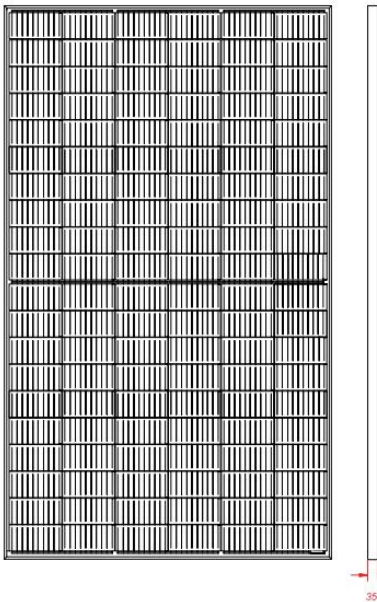
Linear Power output warranty

25
YEARS

Product warranty on materials and workmanship

10
YEARS

DIMENSION OF PV MODULE



Electrical Characteristics

STANDARD TEST CONDITIONS: IRRADIANCE: 1000W/M² AM: 1.5 TEMPERATURE: 25°C

Maximum Power (Pmax)	440W	445W	450W
Maximum Power Voltage (Vmp)	33.72	33.82	33.91
Maximum Power Current (Imp)	13.05	13.16	13.27
Open Circuit Voltage (Voc)	41.02	41.10	41.18
Short Circuit Current (Isc)	13.73	13.79	13.85
Module Efficiency (%)	20.36	20.59	20.82

Temperature Coefficients

Temperature Coefficients of Pm	-0.360%/°C
Temperature Coefficients of Voc	-0.280%/°C
Temperature Coefficients of Isc	+0.05%/°C

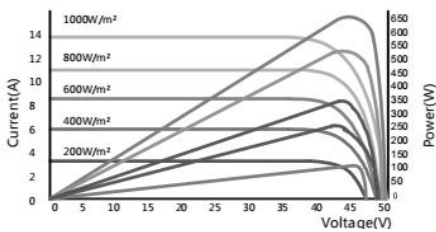
Max. Limits

Maximum System Voltage	1500V
Module Operating Temperature	-40°C to +85°C
Noct	45°C±2 °C

Mechanical Characteristics

Cell Technology and size	182mmx91mm Mono-crystal silicon
Number of Cells (pcs)	60*2 pcs
Dimensions	1906x1134x35mm
Weight	24.5kgs
Frame	Anodized Aluminum Alloy
Length of Cables (mm)	4mm ² , cable length 300mm
Allowable Hail Load	227g steel ball dropped from 1m height
Surface Maximum Load Capacity	1600pa

IV-Curves



Packaging configuration

Modules per pallet	32pcs
Modules per 40HQ container	768pcs

Toll free: 1 888 273 2188

E- mail: sales@allesun.com

Website: www.allesun.com