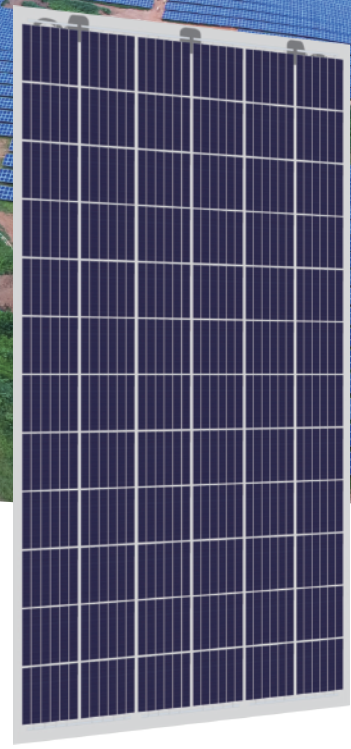




PERLIGHT
smart.black



**POLYCRYSTALLINE
SILICON SOLAR MODULE**

PLM-320P-72DG SERIES

PERLIGHT SOLAR

Founded in 2006, Perlight Solar is growing to be the world leading residential smart solar PV products manufacturer & service provider.

Based on more than 30 years manufacturing experience of Baolite Group, along with the implementation of MES & ERP system, Perlight Solar have realized lean and flexible manu-

facturing of solar cell & solar module.

With corporate values "Customer First, Talent Excellence, Pragmatic Innovation, Integrity & Win-Win", Perlight Solar will continue to provide excellent smart energy products & service to global families and vision to be the leading brand in global distributed smart energy.

16.90%
Maximum Module Efficiency

12 YEAR 12 Years
Limited Product Warranty

30 YEAR 30 Years
Performance Warranty



Performance

Good performance even under low light conditions



Reliability

Strict selection of raw materials and strict quality control ensure reliability



Smart

Optional smart-ready design. Easy upgrade into smart solar module solution

DOUBLE GLASS

POLY DOUBLE GLASS 72-CELL SERIES

ELECTRICAL PERFORMANCE

Module type		PLM-320P-72DG SERIES					
Power output	P_{max}	W	310	315	320	325	330
Power output tolerances	ΔP_{max}	%	0 - 3				
Voltage at Pmax	V_{mpp}	V	37.44	37.73	38.01	38.38	38.74
Current at Pmax	I_{mpp}	A	8.28	8.35	8.42	8.47	8.52
Open-circuit voltage	V_{oc}	V	45.45	45.60	45.82	45.93	46.08
Short-circuit current	I_{sc}	A	8.85	8.91	9.03	9.08	9.15
Solar Module Efficiency	Eff.	%	15.88	16.14	16.40	16.65	16.90

STC: 1000W/m² irradiance, 25°C cell temperature, AM 1.5g spectrum according to EN 60904-3.

ELECTRICAL DATA (NOCT)

Maximum Power- P_{MAX} (Wp)	228.10	233.20	239.40	241.30	245.60
Maximum Power Voltage- V_{MPP} (V)	34.30	34.70	35.10	35.20	35.50
Maximum Power Current- I_{MPP} (A)	6.65	6.71	6.81	6.85	6.92
Open Circuit Voltage- V_{oc} (V)	42.20	42.80	42.70	42.80	43.00
Short Circuit Current- I_{sc} (A)	7.18	7.22	7.31	7.35	7.41

MECHANICAL DATA

Solar cells	Multicrystalline 156.75×156.75 mm (6 inches)
Cell orientation	72 cells (6×12)
Module dimensions	1968×992×6mm (1968×992×25mm with junction box)
weight	28kg
front Glass	2.5mm, High Transmission, AR Coated and Heat Strengthened Glass
EVA	Clear / White
Back Glass	Heat Strengthened Glass, 2.5mm
Frame	Frameless / Customized frame
J-Box	IP 67
Cables & Plug connectors	600mm/4MM2 & MC4 compatible/IP67
Fire Type	CLASS C

TEMPERATURE RATINGS

Nominal Operating Cell Temperature (NOCT)	44°C (±2°C)
Temperature Coefficient of P_{MAX}	- 0.40%/°C
Temperature Coefficient of V_{oc}	- 0.30%/°C
Temperature Coefficient of I_{sc}	+0.06%/°C

PACKAGING CONFIGURATION

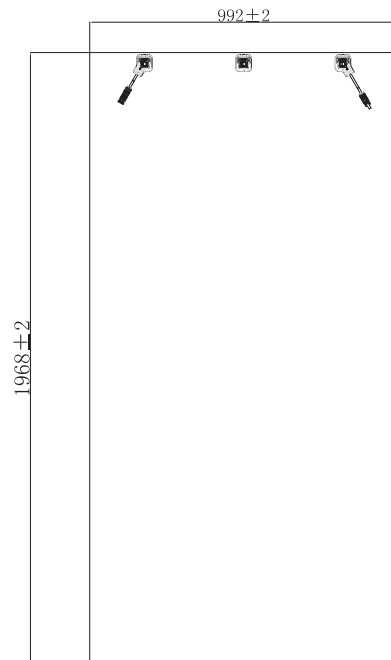
Modules per box: 33 pieces
Modules per 40' container: 726 pieces

Perlight Partners



PERLIGHT
smart.black

Module Diagram:



BACK VIEW

Electrical Curves:

