



## 290-300 Wp 60 MONOCRYSTALLINE CELLS

AEG solar modules combine the most advanced technology with high reliability in manufacture to offer you a product meant for high achievements.



## HIGH EFFICIENCY WITH PERC TECHNOLOGY

The AEG solar module AS-M602B ULTRA features PERC coating, which allows you to gain extra efficiency and boost the performances of your solar plant.



## ULTRA BLACK, ULTRA PREMIUM

The premium selection of components grants the AEG AS-M602B ULTRA a 'total look' with superior aesthetics and product quality.

## COMPREHENSIVELY CERTIFIED

AEG solar modules and production facilities are compliant with the the latest standards to guarantee safety and reliability. Production facilities are certified according to ISO 9001, ISO 14001 and OHSAS 18001. AEG solar products are certified among others by:



## YOUR ADVANTAGE AT A GLANCE

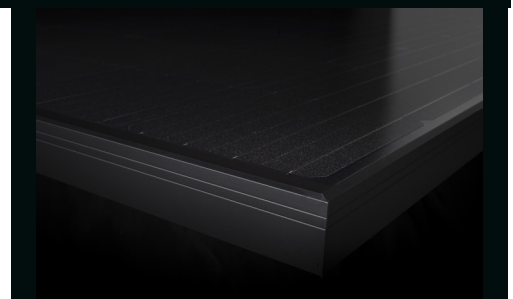
Premium solar panel with quality components  
High efficiency - up to 300 Wp  
Product compliant with IEC 61215, IEC 61730  
12 years Product warranty  
25 years linear Power warranty

More on: [www.aeg-industrialsolar.de](http://www.aeg-industrialsolar.de)



## ELECTRICAL CHARACTERISTICS AT STC<sup>1</sup>

Nominal Power (P <sub>max</sub> )	[Wp]	290	295	300
Tolerance on Nominal Power P <sub>max</sub> <sup>2</sup>	[%]	0-5	0-5	0-5
Maximum Power Voltage (V <sub>mp</sub> )	[V]	32.19	32.40	32.61
Maximum Power Current (I <sub>mp</sub> )	[A]	9.01	9.11	9.21
Open Circuit Voltage (V <sub>oc</sub> )	[V]	39.48	39.64	39.80
Short Circuit Current (I <sub>sc</sub> )	[A]	9.49	9.59	9.69
Module Efficiency (η <sub>m</sub> )		17.72%	18.02%	18.33%
Maximum System Voltage	[V]	1000	1000	1000
Series Fuse Maximum Rating	[A]	15	15	15



## MECHANICAL CHARACTERISTICS

Solar cells	60 (6 x 10) monocrystalline silicon, 156 x 156 mm (6") cells
Front glass	3.2 mm (0.13") high-transparency AR coating glass
Backsheet	Black backsheet
Encapsulant	EVA (Ethylene-Vinyl Acetate)
Frame	Anodized aluminum alloy, black
Junction box	IP67 rated, 3 bypass diodes
Cables	UV resistant cable 1000 mm (39.3"), sec.4.0 mm <sup>2</sup>
Connectors	MC4 compatible connectors
Dimensions	1650 mm x 992 mm x 35 mm (64.9" x 39.1" x 1.37")
Weight	18.2 kg (40.12 lbs)
Maximum load	Wind: 2400 Pa / Snow: 5400 Pa

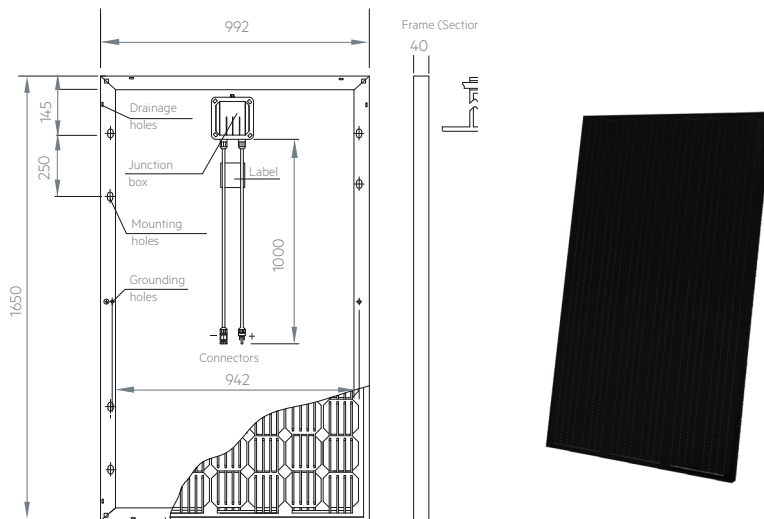
## TEMPERATURE CHARACTERISTICS

NOCT	45°C ± 2°C
P <sub>max</sub> Temp. Coefficient (γ)	-0.39 %/°C
V <sub>oc</sub> Temp. Coefficient (β)	-0.30 %/°C
I <sub>sc</sub> Temp. Coefficient (α)	0.06%/°C
Operating temperature	-40°C to + 85°C

## PACKING CONFIGURATION

Packing configuration	31 pcs / pallet
Loading capacity	868 pcs / 40 ft HC

## TECHNICAL DRAWINGS



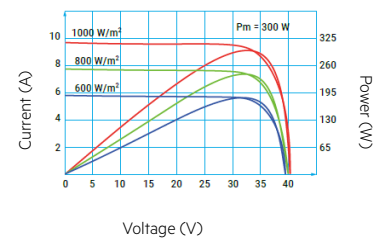
Module dimensions in the technical picture are expressed in mm with tolerance ±2 mm (±0.079")  
 1 - Standard Test Conditions (STC): Irradiance 1000 W/m<sup>2</sup>, Air Mass AM = 1.5, Cell Temperature 25°C, Power measurement uncertainty within ± 3%.  
 2 - Performance Warranty: No less than 97% of the minimum "Peak Power at STC" in the first year; power output decline no more than 0.7% per year thereafter. Full text of the Warranty Terms available at [www.aeg-industrialsolar.de](http://www.aeg-industrialsolar.de)  
 © Solar Solutions GmbH. Specifications in this datasheet are subject to change without notice. Code: AS-M602B-P-M6N1-488 290-300 version 201904.V2.EN  
 AEG is a registered trademark used under license from AB Electrolux (publ).

## WARRANTIES

Product warranty	12 years
Performance warranty	25 years, linear <sup>2</sup>

## I-V CURVES / IRRADIANCES

Module: 300 Wp



## CONTACT US

Solar Solutions GmbH | Schneckenhofstrasse 19 | 60596 Frankfurt am Main | Germany  
 Tel: +49 69 400 500 810 | Fax: +49 69 400 500 819 | Mail: [info@aeg-industrialsolar.de](mailto:info@aeg-industrialsolar.de)  
[www.aeg-industrialsolar.de](http://www.aeg-industrialsolar.de)