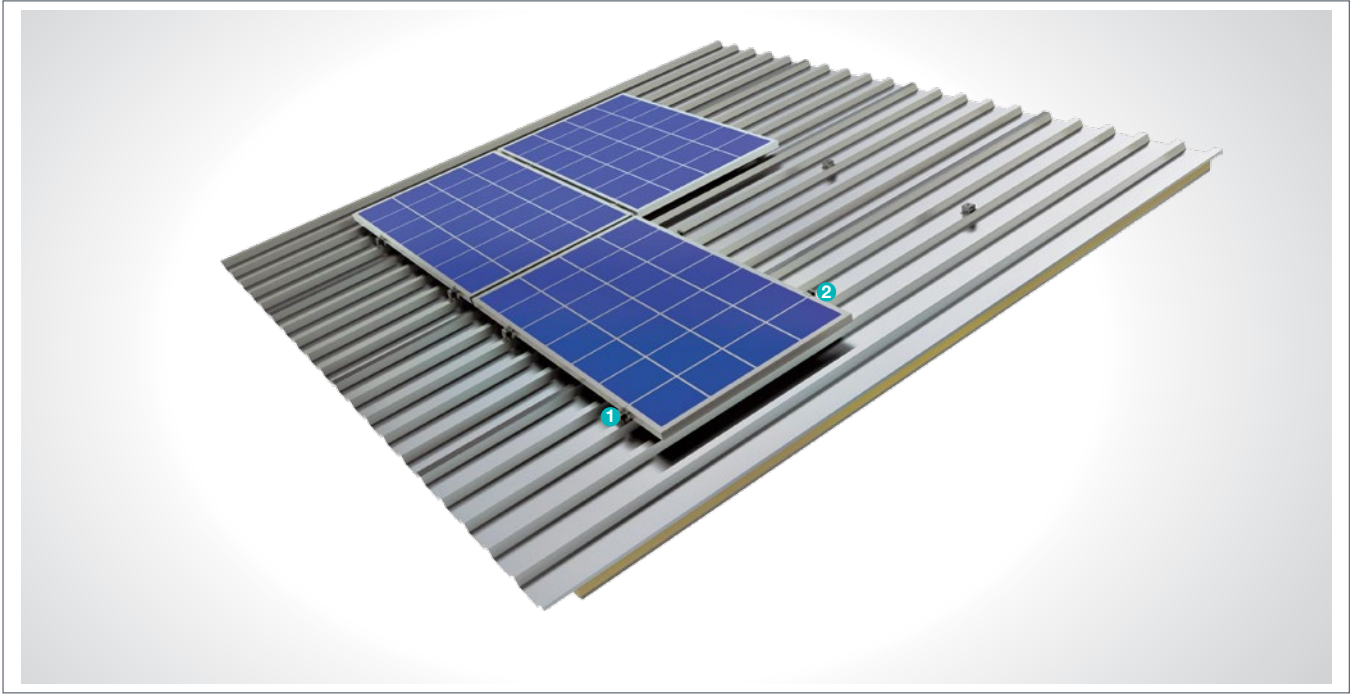


(KPT29) Pitched Roof Aluminum Mounting System

Overview

KPT29, is an aluminum mounting system for pitched roof. The system is an optimal application solution for installations of PV projects on large and small-sized roofs. System components are manufactured with high-tech machinery and equipment. The system, incorporating a high-level engineering design, provides assembly and cost advantages.



PANEL SIDE RETAINER

1



■ **H30-H32-H40**
M8X30 Hex Bolt
M8 Nut
Pitched Roof Screw

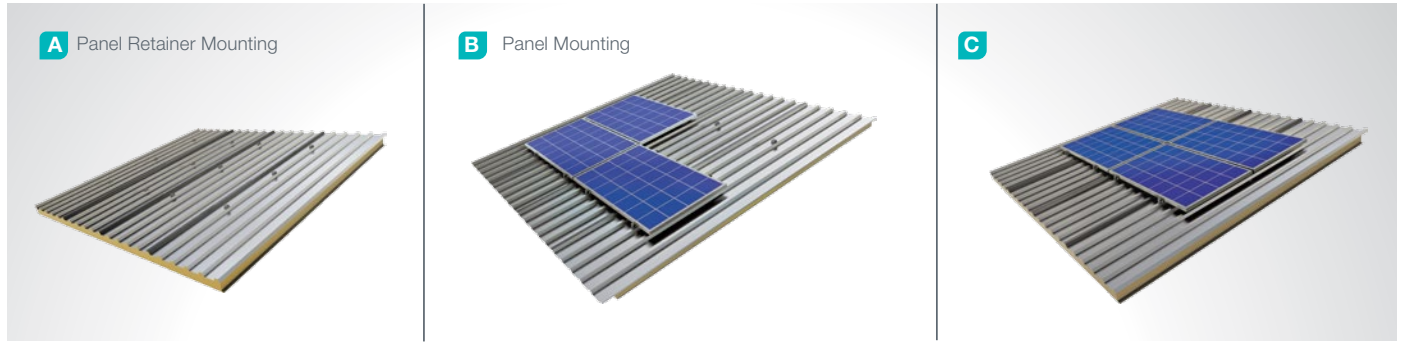
PANEL SIDE RETAINER

2



■ **L70**
M8X30 Hex Bolt
M8 Nut
Pitched Roof Screw

Installation Phase



Advantages

- Time saving for installation
- Cost saving for installation
- Horizontal and Vertical positioning
- Suitable solutions for different roof types
- Tailored design solutions for customer
- Customer oriented engineering solutions

Technical Specifications

Description:	(KPT29) Pitched Roof Aluminum Mounting System
Mounting Method:	Pitched Roof Mounting
Module Application:	Framed and Unframed
Beam Material:	EN AW 6063
Panel Retainer:	ASTM A 304 / A 316
Purlin Material:	EN AW 6063
Connector Equipment:	DIN 934 / DIN933 / DIN 912, A2-70