

## CST285~315M6-20

### Standard 60 Cells Monocrystalline PV Module

Mono 5BB High Efficiency Module



IEC61215 : 2016  
IEC61730 : 2016

**315W**  
Maximum Power Output

**19.36%**  
Maximum Efficiency

**0~+5W**  
Positive Power Tolerance



#### High module conversion efficiency

Achieved high Module efficiency through advanced cell technology and manufacturing capabilities



#### Excellent weak light performance

More power output in weak light condition such as haze cloudy and morning



#### Certified to withstand

Wind load (2400 Pascal) and snow load (5400 Pascal)



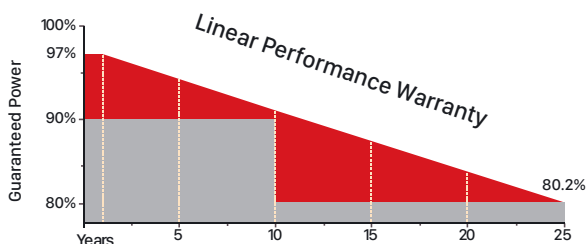
#### Withstanding harsh environment

Reliable quality leads to a better sustainability even in harsh environment like desert, farm and coastline



#### High PID resistant

Advanced cell technology and qualified materials lead to high resistance to PID



97.0% in the first year, thereafter, for years two (2) through twenty-five (25), 0.7% maximum decrease from MODULE's nominal power output per year, ending with the 80.2% in the 25th year after the defined WARRANTY STARTING DATE.

- 12-year product warranty
- 25-year linear performance warranty

### Electrical Characteristics

PV module model	CST285M6-20	CST290M6-20	CST295M6-20	CST300M6-20	CST305M6-20	CST310M6-20	CST315M6-20
Maximum Power - Pmax(W)	285	290	295	300	305	310	315
Open Circuit Voltage - Voc(V)	39.2	39.4	39.6	39.7	40.1	40.2	40.4
Short Circuit Current - Isc(A)	9.62	9.76	9.86	9.97	9.86	9.99	10.09
Voltage at Pmax-Vmp(V)	31.7	31.8	32.0	32.2	33.1	33.2	33.4
Current at Pmax-Imp(A)	8.99	9.12	9.22	9.32	9.21	9.34	9.43
Module Efficiency-ηm(%)	17.52	17.83	18.13	18.44	18.75	19.05	19.36

Power Tolerance	(0,+5)
Maximum System Voltage(V)	1000/1500
Maximum Series Fuse Rating(A)	15

STC: Irradiance 1000 W/m<sup>2</sup>, module temperature 25 °C, AM=1.5;  
Best in Class AAA solar simulator (IEC 60904-9) used , power measurement uncertainty is within +/-3%.

### Mechanical Specifications

External Dimensions	1640*992*35mm
Weight	18.5kg
Solar Cells	mono crystalline (60pcs)
Front Glass	3.2 mm tempered glass low iron
Frame	Anodized aluminum alloy
Junction Box	IP68
Output Cables	4.0mm <sup>2</sup> , cable lenght: 900mm
Connector	(Compatible with)MC4
Mechanical Load/front	a:5400pa b:3600pa
Mechanical Load/back	a:2400pa b:1600pa

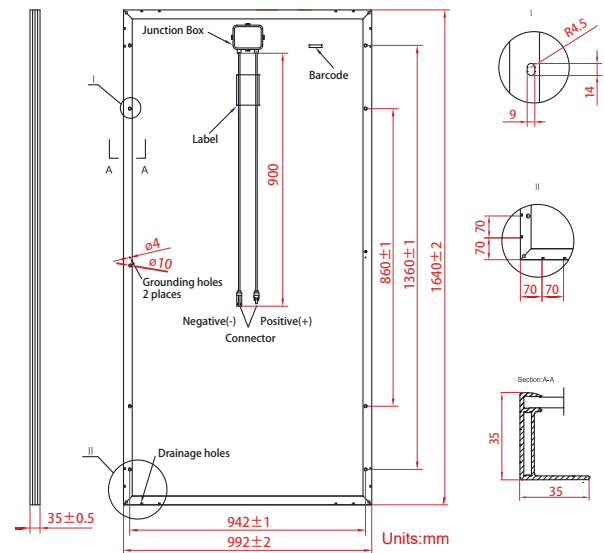
### Packing Configuration

Container	20'GP	40'GP
Pieces per pallet	30	30
Pallets per container	12	28
Pieces per container	360	840

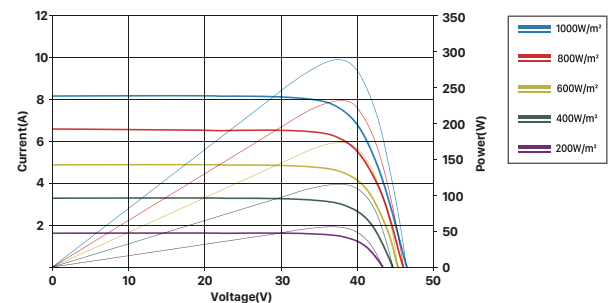
### Temperature Characteristics

Pmax Temperature Coefficient	-0.40%/°C
Voc Temperature Coefficient	-0.32%/°C
Isc Temperature Coefficient	+0.05%/°C
Operating Temperature	-40~+85°C
Nominal Operating Cell Temperature (NOCT)	45±2°C

### Engineering Drawings



### Current-Voltage&Power-Voltage Curve(290W)



### Temperature Dependence of Isc, Voc, Pmax

