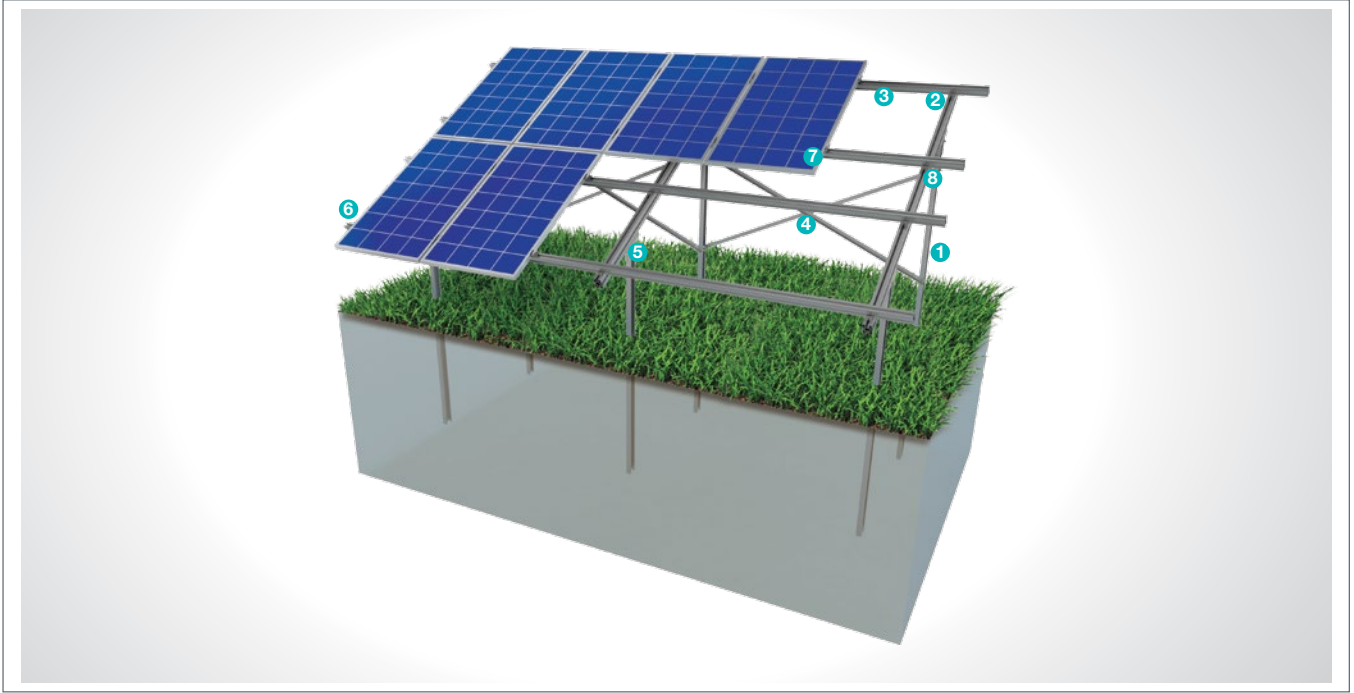


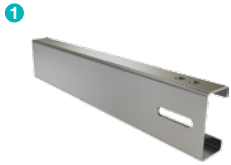
(KPT11) Aluminum Mounting System with Ground Driven Steel Column & 2 Vertical Panels

Overview

KPT11, is an aluminum support and mounting system mounted with ground driven steel column and 2 vertical panels for open terrain solar panels. The system is an optimal application solution for installations of PV projects on large and medium-sized terrains . System components are manufactured with high-tech machinery and equipment. The system, incorporating a high-level engineering design, provides assembly and cost advantages..

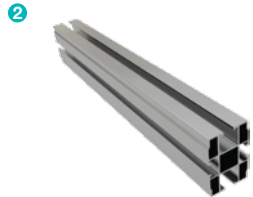


STEEL COLUMN



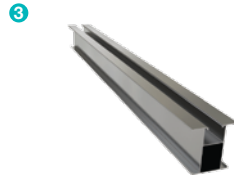
- **CK-90 / CK-100 / CK-120**
M12X30 Knurled Bolt
M12 Flanged Nut
M12 Washer

ALUMINUM BEAM



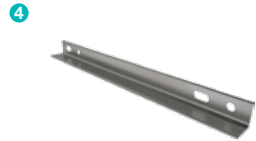
- **AR-120 x 80**
M12X25 Knurled Bolt
M12 Rectangular Nut
M12 Washer
M12X90 Knurled Bolt

ALUMINUM PURLIN



- **AA-70x70**
M8X30 Hex Bolt
M8 Rectangular Nut

STEEL L BRACKET



- **CL-40X40 / CL-50X50**
M12X30 Knurled Bolt
M12 Flanged Nut
M12 Washer

BEAM COLUMN BRACKET CONNECTOR



- **EK-A**
M8X30 Hex Bolt
M8 Flanged Nut

PANEL SIDE RETAINER



- **H30-H32-H40**
M8X30 Hex Bolt
M8 Rectangular Nut

PANEL CENTER RETAINER



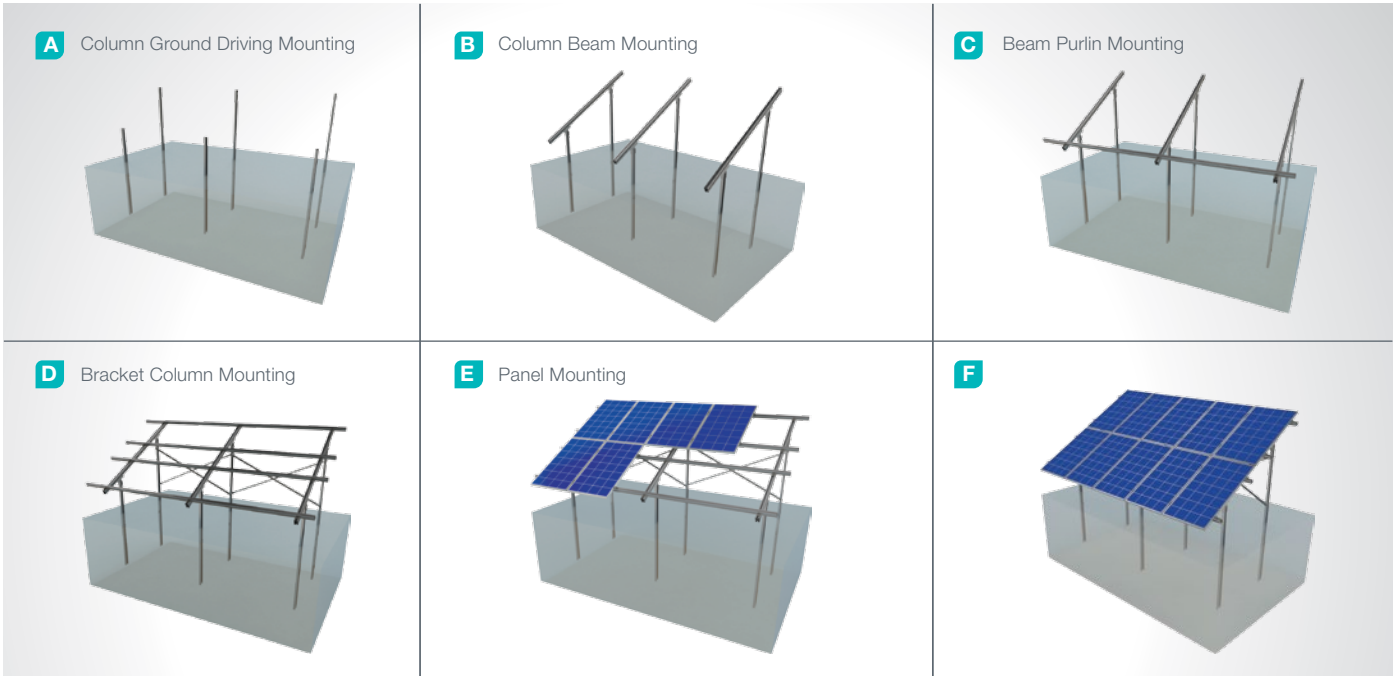
- **L70**
M8X30 Hex Bolt
M8 Rectangular Nut

ALUMINUM PURLIN CLAMPING PIECE



- **L35**
M8X30 Hex Bolt
M8 Flanged Nut

Installation Phase



Advantages

- Time saving for installation
- Cost saving for installation
- Suitable solutions for combiner box and inverter installation
- Suitable solutions for different terrains
- Tailored design solutions for customer
- Customer oriented engineering solutions

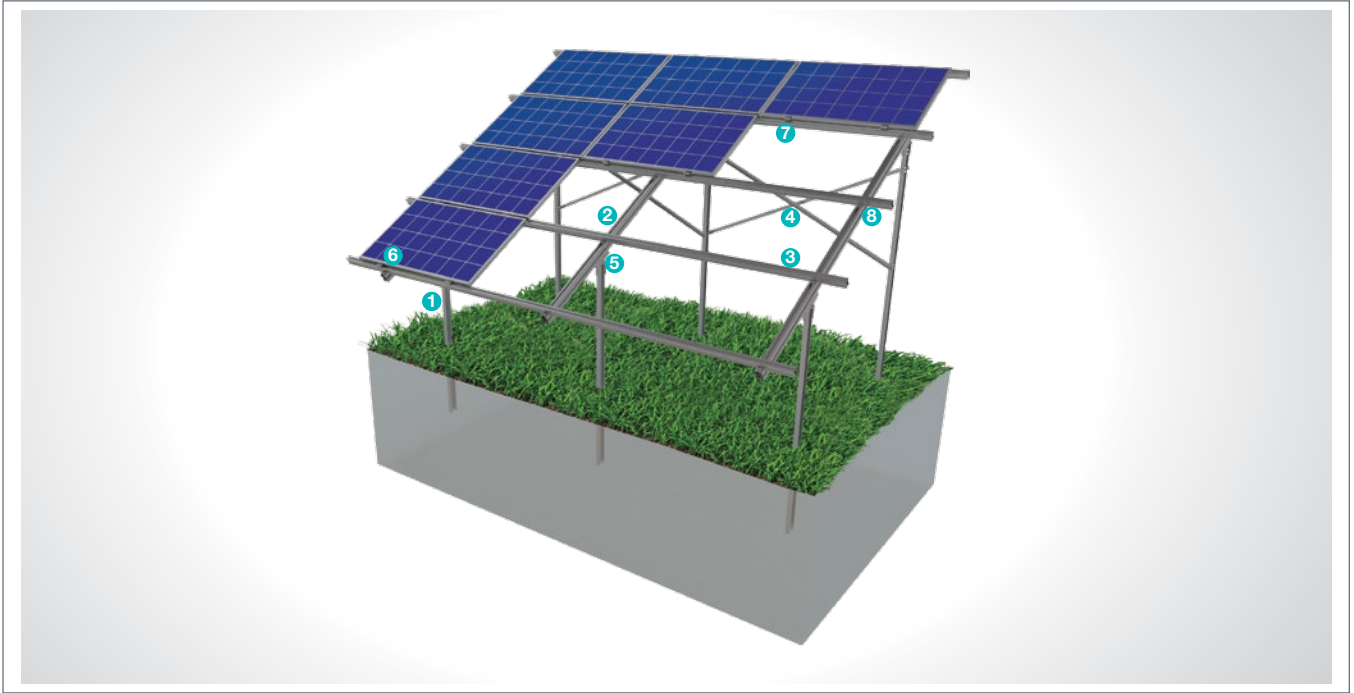
Technical Specifications

Description:	(KPT11) Aluminum Mounting System with Ground Driven Steel Column & 2 Vertical Panels
Mounting Method:	Ground Driving
Tilt Angle:	0-60 degrees
Module Application:	Framed and Unframed
Panel Height From Ground:	60 cm
Column and Beam Coating:	EN ISO 1461
Column and Beam Material:	EN 10025 / EN 10029
Purlin Material:	EN AW 6063
Optional Beam Material:	EN 10346
Panel Retainer:	EN AW 6063
Connector Equipment:	DIN 934 / DIN933 / DIN 912, A2-70 DIN 50979

(KPT12) Aluminum Mounting System with Ground Driven Steel Column & 4 Horizontal Panels

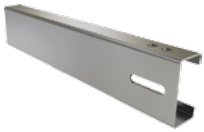
Overview

KPT12, is an aluminum support and mounting system mounted with ground driven steel column and 4 horizontal panels for open terrain solar panels. The system is an optimal application solution for installations of PV projects on large and medium-sized terrains . After manufacturing the system components with high-technology machines and equipment, an excellent corrosion resistance is then achieved through hot-dip galvanized coating. The system, incorporating a high-level engineering design, provides assembly and cost advantages.



STEEL COLUMN

1



- CK-90 / CK-100 / CK-120
- M12X30 Knurled Bolt
- M12 Flanged Nut
- M12 Washer

ALUMINUM BEAM

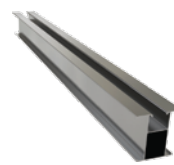
2



- AR-120 x 80
- M12X25 Knurled Bolt
- M12 Rectangular Nut
- M12 Washer
- M12X90 Knurled Bolt

ALUMINUM PURLIN

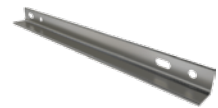
3



- AA-70x70
- M8X30 Hex Bolt
- M8 Rectangular Nut

STEEL L BRACKET

4



- CL-40X40 / CL-50X50
- M12X30 Knurled Bolt
- M12 Flanged Nut
- M12 Washer

BEAM COLUMN BRACKET CONNECTOR

5



- EK-A
- M8X30 Hex Bolt
- M8 Flanged Nut

PANEL SIDE RETAINER

6



- H30-H32-H40
- M8X30 Hex Bolt
- M8 Rectangular Nut

PANEL CENTER RETAINER

7



- L70
- M8X30 Hex Bolt
- M8 Rectangular Nut

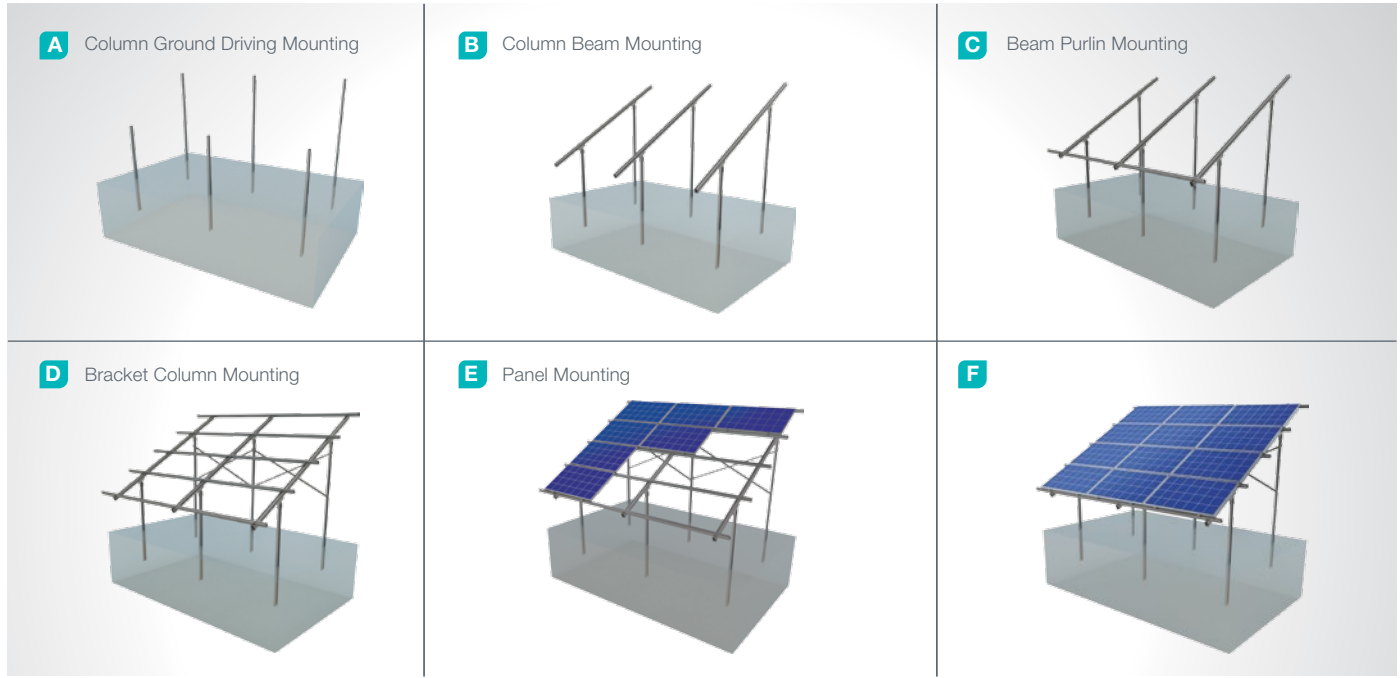
ALUMINUM PURLIN CLAMPING PIECE

8



- L35
- M8X30 Hex Bolt
- M8 Flanged Nut

Installation Phase



Advantages

- Time saving for installation
- Cost saving for installation
- Suitable solutions for combiner box and inverter installation
- Suitable solutions for different terrains
- Tailored design solutions for customer
- Customer oriented engineering solutions

Technical Specifications

Description:	(KPT12) Aluminum Mounting System with Ground Driven Steel Column & 4 Horizontal Panels
Mounting Method:	Ground Driving
Tilt Angle:	0-60 degrees
Module Application:	Framed and Unframed
Panel Height From Ground:	60 cm
Column and Beam Coating:	EN ISO 1461
Column and Beam Material:	EN 10025 / EN 10029
Purlin Material:	EN AW 6063
Optional Beam Material:	EN 10346
Panel Retainer:	EN AW 6063
Connector Equipment:	DIN 934 / DIN933 / DIN 912, A2-70 DIN 50979