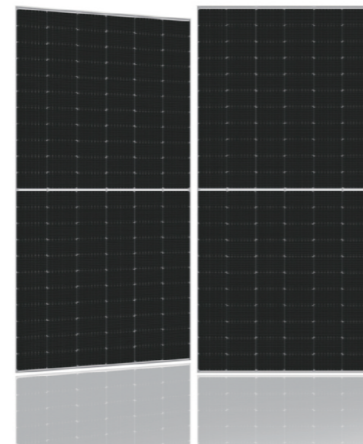
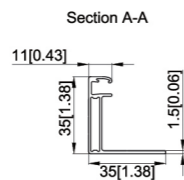
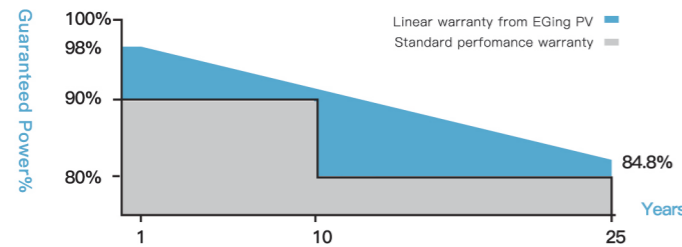


产品介绍 PRODUCT INTRO

EfMb Series

MONO CRYSTALLINE SOLAR MODULE


400W~415W



QUALITY GUARANTEED


- ① Linear output power guaranteed
- ② 10 years product warranty
- ③ 25 years linear power output






High Efficiency

Advanced solar cell technology ensures the high module efficiency up to 20.8%.




Positive Power Selection

Module will generate power selection of 0 to +5W.




Strong Load Capacity

Module is capable to withstand 2400Pa wind loads and 5400Pa Snow loads.



Reliable quality

Module is manufactured in accordance with international quality standards ISO9001



Higher Weatherproof Rating

J-Box performs module with an environmental protection rating to IP68.

MODULE CHARACTERISTICS

Models	GEP-EfMb400M	GEP-EfMb405M	GEP-EfMb410M	GEP-EfMb415M
	GEP-EfMb400MH	GEP-EfMb405MH	GEP-EfMb410MH	GEP-EfMb415MH
Maximum Power (Pmax)	400W	405W	410W	415W
Positive Power Selection	0/+5W	0/+5W	0/+5W	0/+5W
Maximum Power Voltage (Vmp)	36.24V	36.33V	36.42V	36.51V
Maximum Power Current(Imp)	11.04A	11.15A	11.26A	11.37A
Open Circuit Voltage (Voc)	45.25V	45.44V	45.62V	45.81V
Short Circuit Current (Isc)	11.73A	11.84A	11.95A	12.06A
Module Efficiency	20.0%	20.3%	20.5%	20.8%
Operating module Temperature	- 40°C ~ +85°C			
Maximum system(DC) Voltage	DC1000V/1500V(IEC)			
Maximum Series Fuse Rating	25A			
Nominal Module Operating Temperature	42±2°C			
Temperature Coefficients of Pmax	- 0.36%/°C			
Temperature Coefficients of Voc	- 0.304%/°C			
Temperature Coefficients of Isc	+ 0.050%/°C			

MECHANICAL CHARACTERISTICS

Solar Cell	166x83mm 9 Mono crystalline 166x83mm 9BB
Number of cells	132(6x22)
Dimensions	1924x1038x35mm (75.75x40.87x1.38 inches)
Weight	22.5Kg (49.60 lbs)
Front Glass	3.2mm (0.13 inches) front glass
Frame	Anodized aluminum alloy
Junction Box	IP68 rated
Cable	4mm ² solar cable 300mm (11.81 inches) Customized Length
Connector	MC4 PV-XT101.1/Z4S-abcde

PACKING

	20GP	40HC
Pieces per pallet	31	31
pallets per container	5	22
Pieces per container	155	682

STC: irradiance 1000 W/m², module temperature 25°C, AM=1.5; Tolerance of Pmax is within +/- 3%.

