



Mono Crystalline Half 120 Cells 320-340 watt

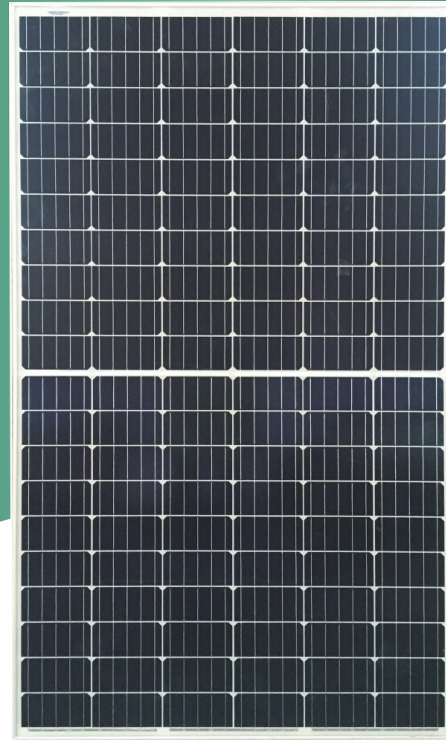
HALF CELL PERC MONO MODULE

Positive power tolerance of 0~+3%

ISO9001:2015

Certified factory

IEC61215/IEC61730



5 Busbar Solar Cell

5 busbar solar cell adopts new technology to improve the efficiency of modules, offers a better aesthetic appearance making it perfect for rooftop installation.



High Efficiency

Higher module conversion efficiency (up to 20.15%) benefit from Passivated Emitter Rear Contact (PERC) technology.



PID Resistance

Excellent Anti-PID performance guarantee limited power degradation for mass production.



Low-light Performance

Advanced glass and cell surface textured design ensure excellent performance in low-light environment.



Severe Weather Resilience

Certified to withstand: wind load (2400 Pascal) and snow load (5400 Pascal).

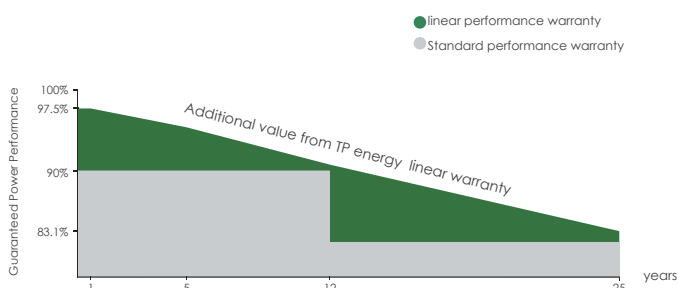


Durability Against Extreme Environmental Conditions

High salt mist and ammonia resistance certified by TUV Rheinland.

► Superior Warranty

TP ENERGY SOLAR PERFORMANCE WARRANTY

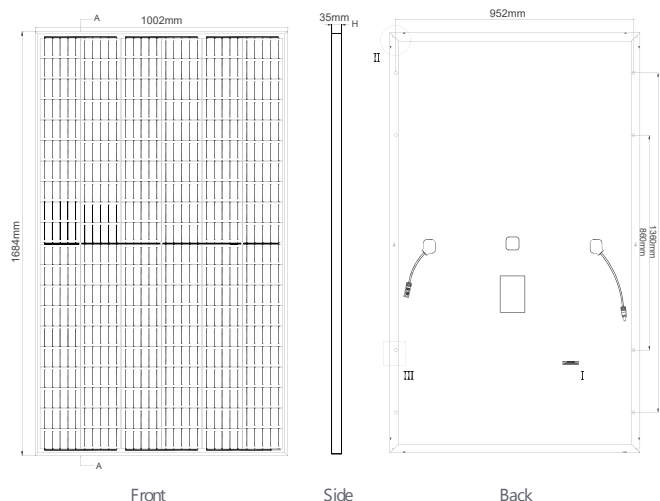


► Comprehensive Certificates

IEC61215/IEC61730/IEC61701/IEC62716
 ISO 9001: Quality Management System
 ISO 14001: Environmental Management System
 ISO14064: Greenhouse Gases Emissions Verification
 OHSAS 18001: Occupation Health and Safety Management System



► DIMENSIONS OF PV MODULE(mm)



► MECHANICAL DIAGRAMS

Cell Type	Mono PERC 158.75x79.37mm
No. of cells	120 (6x20)
Dimensions	1684x1002x35mm
Weight	19.0kg
Front Glass	3.2mm, Anti-Reflection Coating, High Transmission, Low Iron, Tempered Glass
Frame	Anodized Aluminium Alloy
J-Box	≥IP68 Rated
Output Cables	TÜV 1x4.0mm ² Length 300+/400- (mm) length can be customized

► Electrical Characteristics

Module Type	TP120-320M		TP120-325M		TP120-330M		TP120-335M		TP120-340M	
	STC	NOCT	STC	NOCT	STC	NOCT	STC	NOCT	STC	NOCT
Maximum Power (Pmax)	320Wp	238Wp	325Wp	242Wp	330Wp	246Wp	335Wp	250Wp	340Wp	253Wp
Maximum Power Voltage (Vmp)	33.4V	31.4V	33.6V	31.6V	33.8V	31.8V	34.0V	32.0V	34.2V	32.2V
Maximum Power Current (Imp)	9.59A	7.28A	9.68A	7.66A	9.77A	7.74A	9.87A	7.82A	9.96A	7.86A
Open-circuit Voltage (Voc)	40.9V	37.8V	41.1V	38.0V	41.3V	38.2V	41.5V	38.4V	41.7V	38.6V
Short-circuit Current (Isc)	10.10A	8.47A	10.20A	8.54A	10.31A	8.65A	10.36A	8.74A	10.55A	8.86A
Module Efficiency STC (%)	18.98%		19.26%		19.56%		19.85%		20.15%	

► Temperature Ratings

NMOT (Nominal Module Operating Temperature)	45°C (±2°C)
Temperature Coefficient of Pmax	- 0.35%/°C
Temperature Coefficient of Voc	- 0.29%/°C
Temperature Coefficient of Isc	0.048%/°C

► Maximum Ratings

Operational Temperature	-40~+85°C
Maximum System Voltage	1000/1500VDC (IEC)
Max Series Fuse Rating	20A

► Warranty

12 Years Product Workmanship Warranty
25 Years Power Warranty

► Packaging Configuration

Modules per pallet:	30pcs
Modules per 40HQ container	780pcs

► I-V-Curve

