

AEG

GLASS-GLASS SOLAR MODULE AS-M602G



290-300 Wp 60 MONOCRYSTALLINE CELLS

AEG solar modules combine the most advanced technology with high reliability in manufacture to offer you a product meant for high achievements.



1500 V MAXIMUM SYSTEM VOLTAGE FOR IMPROVED BOS

The AEG solar module AS-M602G is suitable for a maximum system voltage of 1500 V, thus improving the general BOS of your installation.



DEVELOPED FOR HARSHEST ENVIRONMENTS

AEG glass-glass solar modules are made for challenges and are designed to withstand extreme weather conditions.

COMPREHENSIVELY CERTIFIED

AEG solar modules and production facilities are compliant with the the latest standards to guarantee safety and reliability. Production facilities are certified according to ISO 9001, ISO 14001 and OHSAS 18001. AEG solar products are certified among others by:



IEC 61215
IEC 61730
Regular Production
Surveillance
www.tuv.com
ID 1419057199



YOUR ADVANTAGE AT A GLANCE

Premium solar panel with quality components
High efficiency - up to 300 Wp
Product certified IEC 61215, IEC 61730
15 years Product warranty
30 years 2-step Power warranty

More on: www.aeg-industrialsolar.de

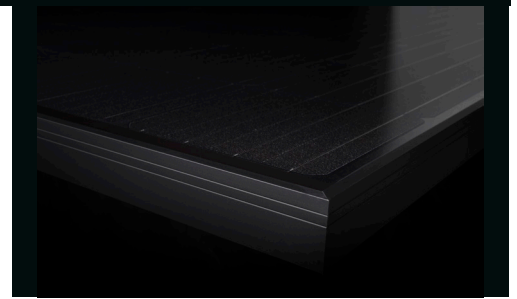


PHOTOVOLTAIC MODULE AS-M602G



ELECTRICAL CHARACTERISTICS AT STC¹

Nominal Power (P _{max})	[Wp]	290	295	300
Tolerance on Nominal Power P _{max} ²	[W]	-0 / +5	-0 / +5	-0 / +5
Maximum Power Voltage (V _{mp})	[V]	32.19	32.40	32.61
Maximum Power Current (I _{mp})	[A]	9.01	9.11	9.21
Open Circuit Voltage (V _{oc})	[V]	39.48	39.64	39.80
Short Circuit Current (I _{sc})	[A]	9.49	9.59	9.69
Module Efficiency (η _m)		17.62%	17.93%	18.23%
Maximum System Voltage	[V]	1500	1500	1500
Series Fuse Maximum Rating	[A]	15	15	15



MECHANICAL CHARACTERISTICS

Solar cells	60 (6 x 10) monocrystalline silicon, 156.75 x 156.75 mm (6.17") cells
Front glass	2.5 mm (0.09") high-transparency glass
Back glass	2.5 mm (0.09") high-transparency glass
Encapsulant	EVA (Ethylene-Vinyl Acetate), transparent
Frame	Anodized aluminum alloy, black
Junction box	Split, IP67 rated, 3 bypass diodes
Cables	UV resistant cable 1000 mm (39.3"), sec.4.0 mm ²
Connectors	MC4 compatible connectors
Dimensions	1659 mm x 992mm x 35 mm (65.31" x 39.0" x 1.37 ")
Weight	24.8 kg (54.6 lbs)
Maximum load	Wind: 2400 Pa / Snow: 5400 Pa

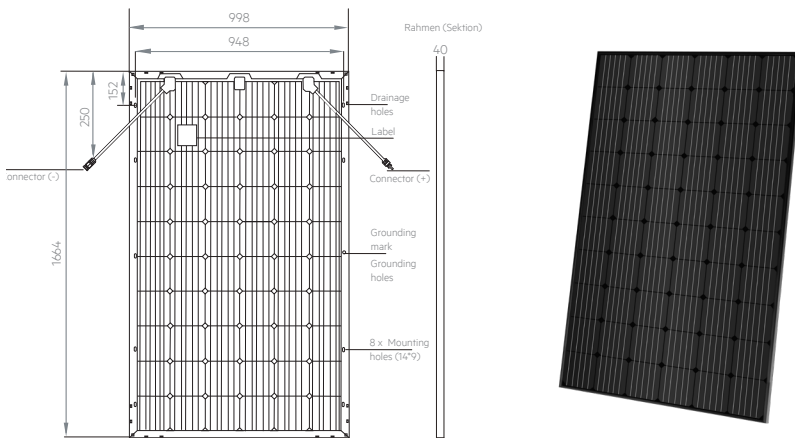
TEMPERATURE CHARACTERISTICS

NOCT	45°C ± 2°C
P _{max} Temp. Coefficient (γ)	-0.39 %/°C
V _{oc} Temp. Coefficient (β)	-0.30 %/°C
I _{sc} Temp. Coefficient (α)	0.06%/°C
Operating temperature	-40°C to + 85°C

PACKING CONFIGURATION

Packing configuration	31 pcs / pallet
Loading capacity	868 pcs / 40 ft HC

TECHNICAL DRAWINGS

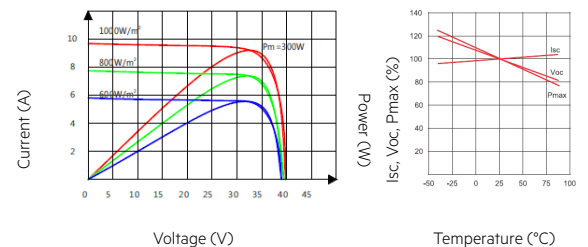


WARRANTIES

Product warranty	15 years
Performance warranty	30 years, 2-step ³

I-V CURVES / IRRADIANCES

Test temperature: 25 °C Module: 300 Wp



Module dimensions in the technical picture are expressed in mm with tolerance +2 mm (+0.079")
 1 - Standard Test Conditions (STC): Irradiance 1000 W/m², Air Mass AM = 1.5, Cell Temperature 25°C). Power measurement uncertainty within ± 3%.
 2 - AEG photovoltaic modules are classified according to a principle of positive power tolerance: the Power Output measured at STC of the delivered modules exceeds their assigned Nameplate Nominal Power at STC within a power tolerance range between -0 Wp and +5 Wp.
 3- Limited power warranty covering the first 15 years at 90% outputs and complexive 30 years at 80% output. Full text of the Warranty Terms available at: www.aeg-industrialsolar.de
 © Solar Solutions GmbH. Specifications in this datasheet are subject to change without notice. Code: AS-M602G-P-M6N1-588 290-300 version 201902.V4.EN-EU
 AEG is a registered trademark used under license from AB Electrolux (publ).

CONTACT US

Solar Solutions GmbH | Schneckenhofstrasse 19 | 60596 Frankfurt am Main | Germany
 Tel: +49 69 400 500 810 | Fax: +49 69 400 500 819 | Mail: info@aeg-industrialsolar.de
www.aeg-industrialsolar.de