

# Multi

# 60cells

(260~290Watt)



Those who dream of a better future can help lead to a more meaningful and enriched world. As a leading solar module manufacturer in Korea, we never stop to achieve competitiveness through differentiation, implement the maximum value, and commit to sustainable development with customers.

## Certificates



### Quality

ISO 9001:2015    ISO 14001:2015  
OHSAS 18001:2007    ISO/TS 16949:2009  
Bankability Tier1 PV module manufacturer



### Product

IEC 61215 / IEC 61730 : TUV / CE  
IEC 61701 Salt Mist Corrosion Level 6  
UL 1703 Fire Rating Type1

## Key Features



### Linear Performance Warranty

10 Years product warranty  
25 Years linear performance warranty



### Certified Durability

5,400 Pa snow load  
2,400 Pa wind load



### 1,500V

Designed for UL and IEC 1,500V  
Saving BoS costs



### PID Free

Anti-PID Cell  
Anti-PID encapsulation technology

## Optional Features



### Perfect Black

Black anodized frame  
Black back sheet  
Black string ribbon



### Floating PV Installation

Module backside blocks moisture permeability

# Multi - Crystalline Solar Module (PB-AN1)

## 60 cells (260~290 Watt)

Electrical Data / STC (PB-AN1) : Irradiance of 1000W/°C, spectrum AM 1.5 and cell temperature of 25°C								
Nominal Max Power	Pmax (Wp)	260	265	270	275	280	285	290
Voltage at Pmax	Vmp (v)	30.5	30.9	31.3	31.7	32.1	32.5	32.9
Current at Pmax	Imp (A)	8.54	8.59	8.64	8.69	8.73	8.78	8.83
Open Circuit Voltage	Voc (v)	37.3	37.7	38.1	38.5	38.9	39.3	39.7
Short Circuit Current	Isc (A)	9.03	9.08	9.13	9.18	9.22	9.27	9.32
Module Efficiency	%	15.57%	15.87%	16.17%	16.47%	16.77%	17.07%	17.37%
Operating Temperature	-40°C ~ +85°C							
Max. System Voltage	1500 Vdc							
Max. Service Fuse Rating	20A							
Max. Reverse Current	20A							
Power tolerance	0 ~ +4.99W							

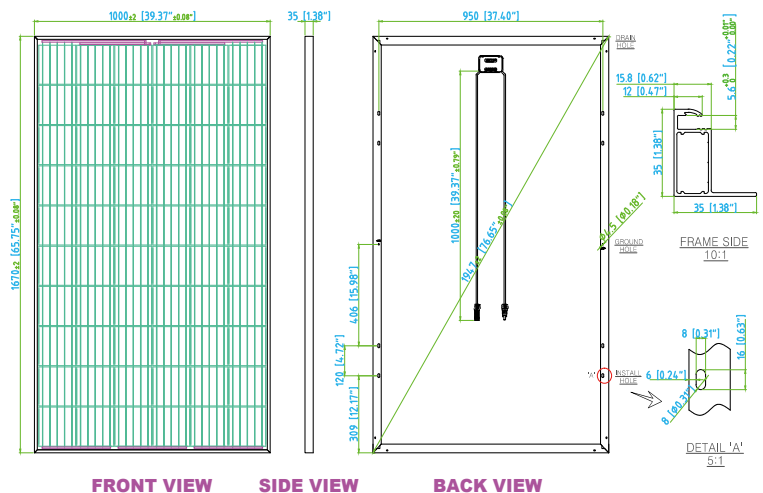
Electrical Data / NOCT (PB-AN1) : Irradiance of 800W/°C, spectrum AM 1.5 and Ambient Temperature of 20°C, wind speed 1m/s								
Nominal Max Power	Pmax (Wp)	188.8	192.4	196.0	199.5	203.0	206.6	210.2
Voltage at Pmax	Vmp (v)	27.5	27.9	28.2	28.5	28.9	29.2	29.5
Current at Pmax	Imp (A)	6.86	6.90	6.95	6.99	7.03	7.07	7.11
Open Circuit Voltage	Voc (v)	33.8	34.1	34.5	34.8	35.2	35.5	35.9
Short Circuit Current	Isc (A)	7.33	7.37	7.41	7.45	7.48	7.53	7.57

Mechanical Data	
Cell Type	Mono-crystalline, 6 inch
Cell Arrangement	60 (6 x 10)
Dimensions	1670 x 1000 x 35mm / (65.75x39.37x1.38in)
Weight	18.9kg (41.7 lbs)
Stand. Packaging	29pcs (vertical)
Module Pieces per Container	754pcs
Pallets per Container	26
Frame	Anodized aluminum
Front glass	3.2mm(0.13in) tempered glass
J-Box	IP68, 3 diodes
Output cable	(+)1000mm(39.37in), (-)1000mm(39.37in), 12AWG
Connectors	MC4 compatible
Module Fire Performance	Type 1

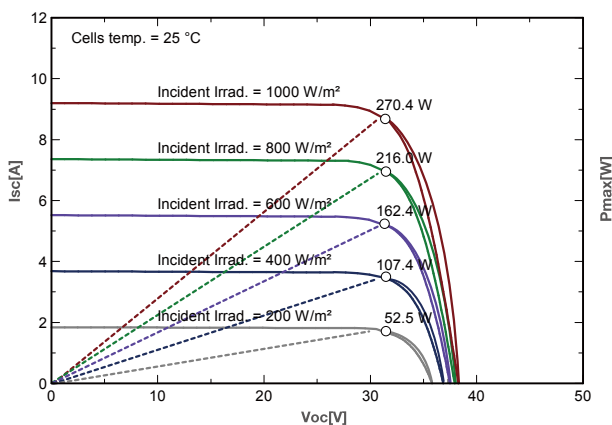
Warranties	
Product	10 years
Performance	10 years performance warranty (>90%)
	25 years linear power warranty (>80%)

Temperature Characteristics	
Specifications	Data
Temperature coefficient (Pmax)	-0.46
Temperature coefficient (Voc)	-0.36
Temperature coefficient (Isc)	0.07
Normal Operating Cell Temperature	46.0 ± 2°C

### MODULE DIAGRAM unit : mm (inch)



### I-V Curve according to Irradiance



**Hansol**  
http://solar.hansoltechnics.com

140, Gwahaksanup 1-ro, Oksan-myeon, Heungdeok-gu,  
Cheongju-si, Chungcheongbuk-do 28122, Korea  
Tel : +82-43-219-3462, US Office : +1-213-793-3688, Fax : +82-43-219-3410  
E-mail : solar@hansol.com

