

Mono-Crystalline



10BB technology decreases the distance between main bus bars and finger grid lines which reduces electric current lose and benefit to power increase.



10BB technology adopts a special round welding ribbon which effectively avoid solar cells cracks and micro cracks.



Sun Earth East solar modules are guaranteed to work for more than 25 years so as to guarantee investor' s profit. The modules are proved that the power depreciation is less than 20% after 25 years working.



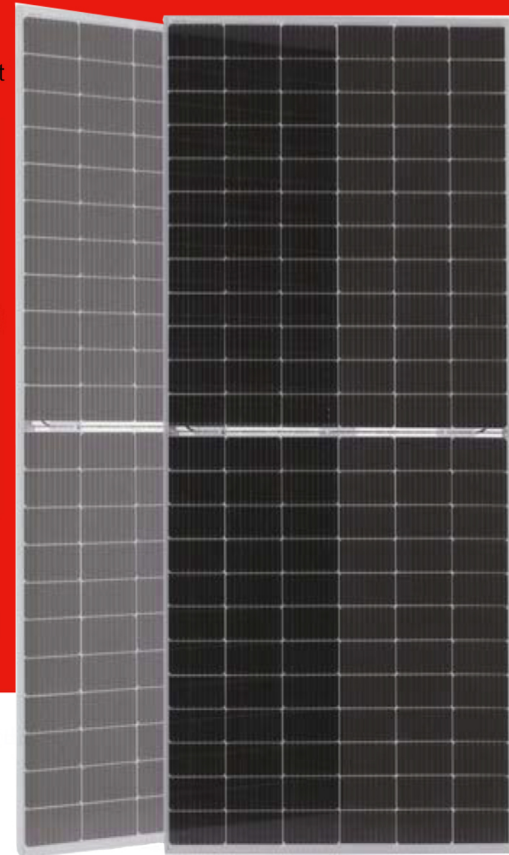
Superior loading capacity: snow pressure of 5400PA and wind pressure of 2400PA.



PID FREE.



Higher power output:Module power increases 5-25% generally, bringing significantly lower LCOE and higher IRR, The power tolerance of module is 0/+5W.



M8 Hi-Eff Mono Half Bifacial Module



DXM8-72H 535W~550W



M8 Hi- Eff Mono Half Bifacial Module

DXM8-72H 535W ~ 550W

SPECIFICATIONS

	STC				NOCT			
	535W	540W	545W	550W	535W	540W	545W	550W
Rated Power (Pmax):	535W	540W	545W	550W	535W	540W	545W	550W
Maximum Power (Pmax):	535W	540W	545W	550W	399.39W	403.13W	406.86W	410.59W
Rated Voltage at Pmax (Vmp):	41.6V	41.7V	41.8V	41.9V	39.18V	39.27V	39.37V	39.46V
Rated Current at Pmax (Imp):	12.86A	12.95A	13.04A	13.13A	10.34A	10.41A	10.49A	10.56A
Open-circuit Voltage (Voc):	49.6V	49.7V	49.8V	49.9V	46.42V	46.52V	46.61V	46.71V
Short-circuit Current (Isc):	13.77A	13.85A	13.92A	13.99A	11.14A	11.20A	11.26A	11.32A
Module Efficiency (ηm):	20.7%	20.9%	21.1%	21.3%				
Maximum System Voltage:					1500VDC			
Application Class:					Class A			
Fire Resistance Class:					Class C			
Maximum Over-Current Rating:					30A			
Operating Temperature:					85% Rh, -40°C ~ +85°C			
Maximum Snow Loads (front):					5400Pa			
Maximum Wind Loads (front & back):					2400Pa			
Maximum Hailstone Impact (diameter @ 23m/s):					25mm			

- STC: Irradiance 1000W/m², Cell temperature 25°C, Air mass AM1.5 according to EN60904-3.
- NOCT: Irradiance 800W/m², Ambient temperature 20°C/s, wind Speed 1m/s.
- Average efficiency reduction of 4.5% at 200W/m² according to EN60904-1.

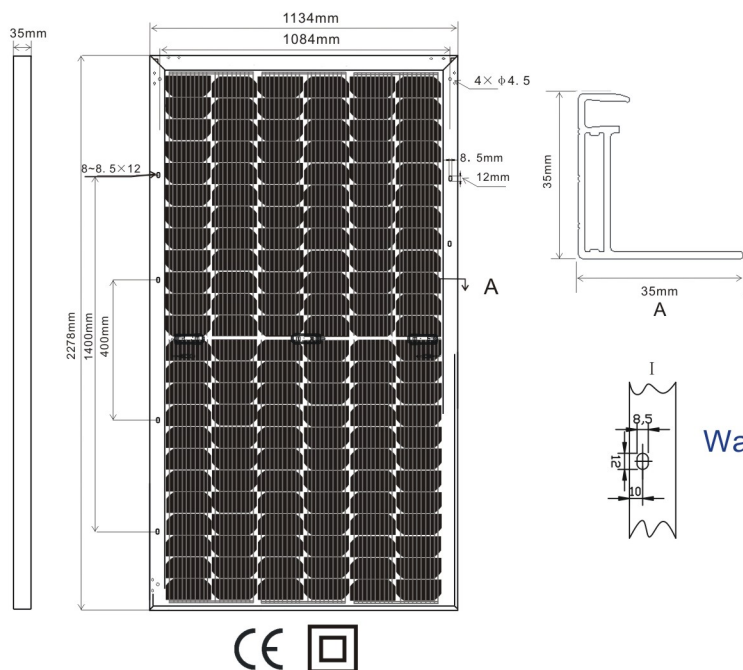
Thermal Characteristics:

Nominal Operating Cell Temperature (NOCT):	45±2°C
Temperature Coefficient of Pmax (γ Pmp):	-0.35%/°C
Temperature Coefficient of Voc (β Voc):	-0.275%/°C
Temperature Coefficient of Isc (α Isc):	+0.045%/°C

Construction Characteristics:

Front Cover:	low-iron tempered glass/3.2mm
Cell:	144 pcs mono-crystalline 182×91mm
Anodized aluminum alloy Frame:	■ silver ■ black
Junction Box (protection degree):	IP68
Cable (length/cross-sectional area):	(+) : 400mm, (-) : 300mm or Customized Length/4mm ²
Connector (protection degree):	IP68
Module Dimension (L×W×H):	2278×1134×35mm
Weight:	28.0±3% kg

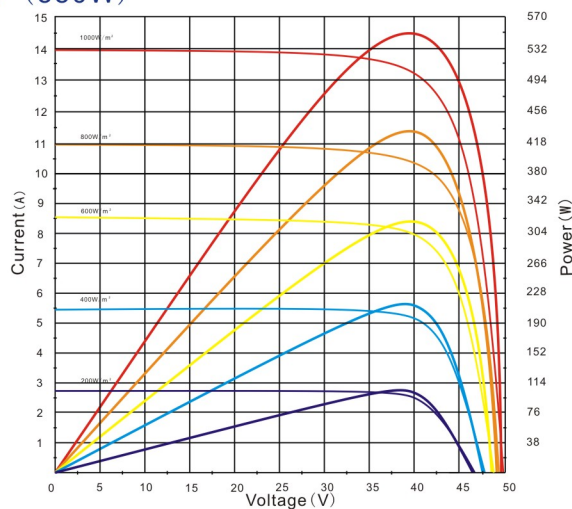
Dimensions (tolerance ±2mm)



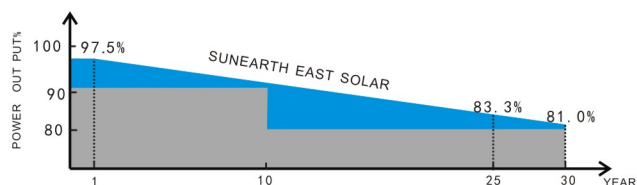
Bifacial Output-Rearside Power Gain

5% Maximum Power (Pmax)	562W	567W	572W	578W
Module Efficiency STC (%)	21.75%	21.95%	22.14%	22.37%
15% Maximum Power (Pmax)	615W	621W	627W	633W
Module Efficiency STC (%)	23.81%	24.04%	24.27%	24.50%
25% Maximum Power (Pmax)	669W	675W	681W	688W
Module Efficiency STC (%)	25.90%	26.13%	26.36%	26.63%

I-V (550W)



Warranty:



Please refer to Sun Earth East Solar Product Warranty for details.