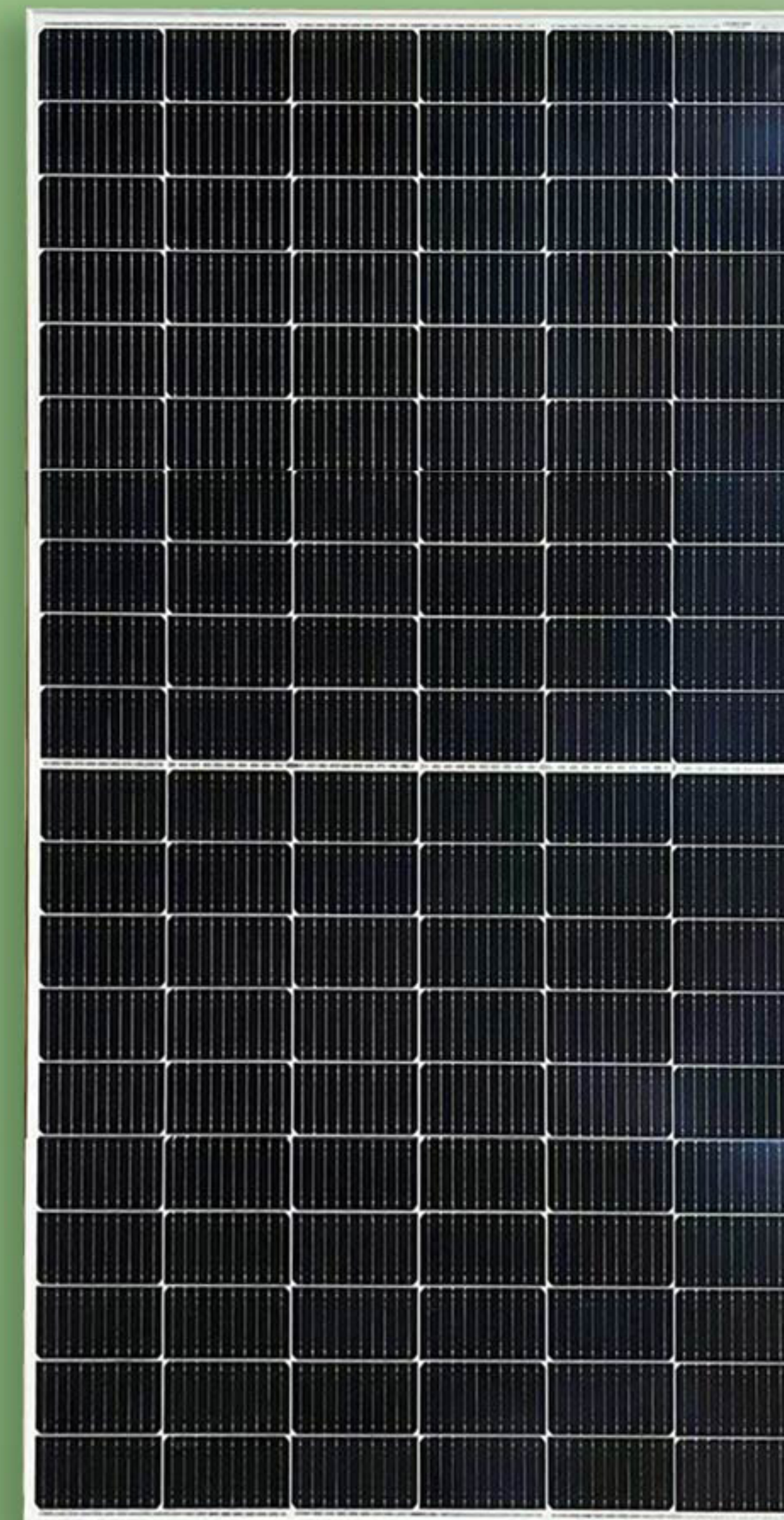


INE-60MH SERIES 182MM 120 CELLS

# 435-455w



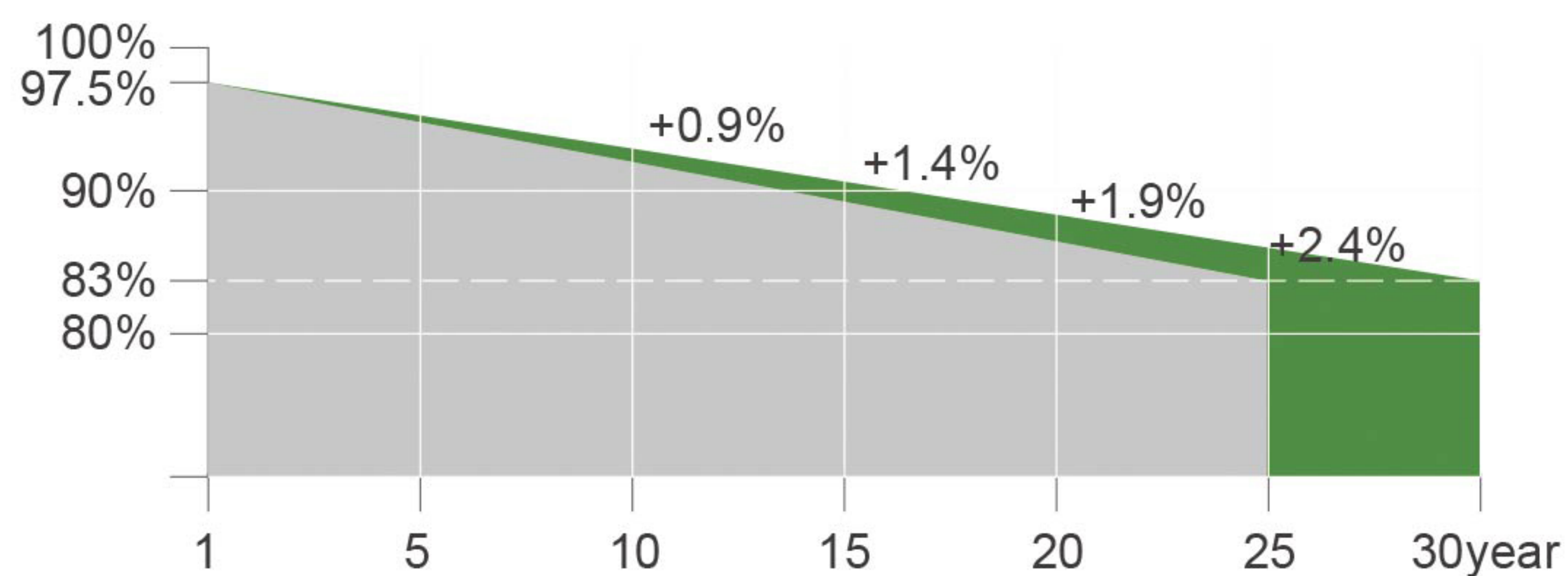
PRODUCT CERTIFICATES



## SYSTEM CERTIFICATES

IEC 61215 / IEC 61730  
 ISO 9001 : Quality Management System  
 ISO 14001 : Environment Mangement System  
 OHSAS 18001 : Occupational Health and Safety Management System

## WARRANTY



INE-60MH SERIES 182MM 120 CELLS

### ELECTRICAL PARAMETERS AT STC

Module Type	INE-435-60MH	INE-440-60MH	INE-445-60MH	INE-450-60MH	INE-455-60MH
Rated Maximum Power(Pmax) [W]	435	440	445	450	455
Open Circuit Voltage(Voc) [V]	41.38	41.44	41.50	41.56	41.62
Maximum Power Voltage(Vmp) [V]	34.16	34.21	34.26	34.31	34.36
Short Circuit Current(Isc) [A]	13.41	13.55	13.67	13.81	13.95
Maximum Power Current(Imp) [A]	12.74	12.87	12.99	13.12	13.25
Module Efficiency [%]	20.1	20.3	20.5	20.7	21.0

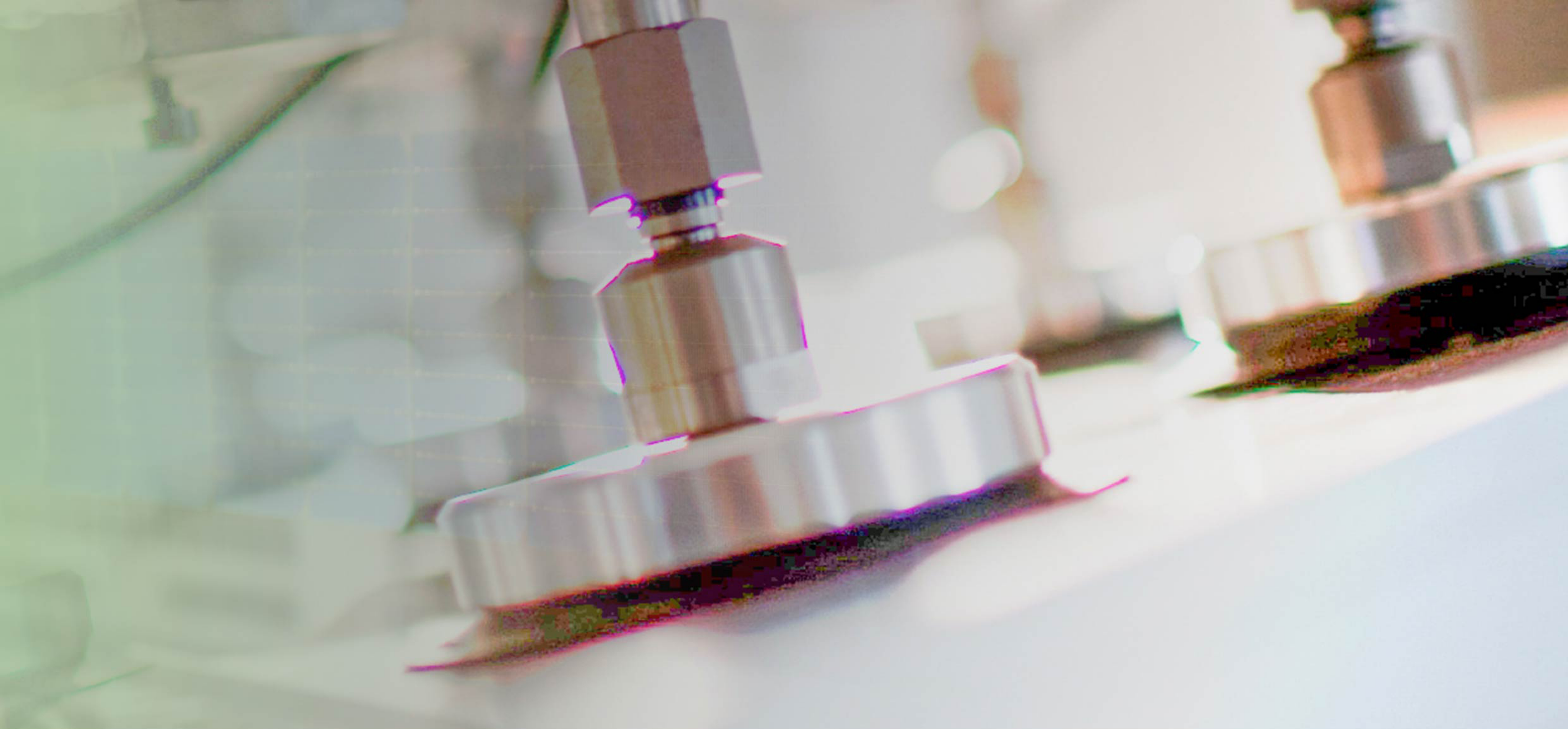
STC: Irradiance 1000 W/m2 module temperature 25°C AM=1.5

### ELECTRICAL PARAMETERS AT NOCT

Module Type	INE-435-60MH	INE-440-60MH	INE-445-60MH	INE-450-60MH	INE-455-60MH
Rated Maximum Power(Pmax) [W]	323	327	331	335	339
Open Circuit Voltage(Voc) [V]	39.06	39.12	39.17	39.23	39.29
Maximum Power Voltage(Vmp) [V]	31.78	31.83	31.87	31.92	31.97
Short Circuit Current(Isc) [A]	10.83	10.94	11.04	11.15	11.26
Maximum Power Current(Imp) [A]	10.19	10.29	10.39	10.49	10.60

NOCT: Irradiance 800 W/m2 ambient temperature 20°C wind speed: 1m/s





## MECHANICAL SPECIFICATION

Cell Type	Monocrystalline
Cell Dimensions	182*91mm
Cell Arrangement	120(6*20)
Weight	24kg
Module Dimensions	1908*1134*35mm
Cable	4.0 mm <sup>2</sup> , wire length: 900 mm or Customized Length
Front Glass	3.2 mm AR coating tempered glass, low iron
Frame	Anodized aluminium alloy
Junction Box	IP67/IP68
Connector	MC4 Compatible
Mechanical Load	Front side 5400Pa/ Rear side 2400Pa

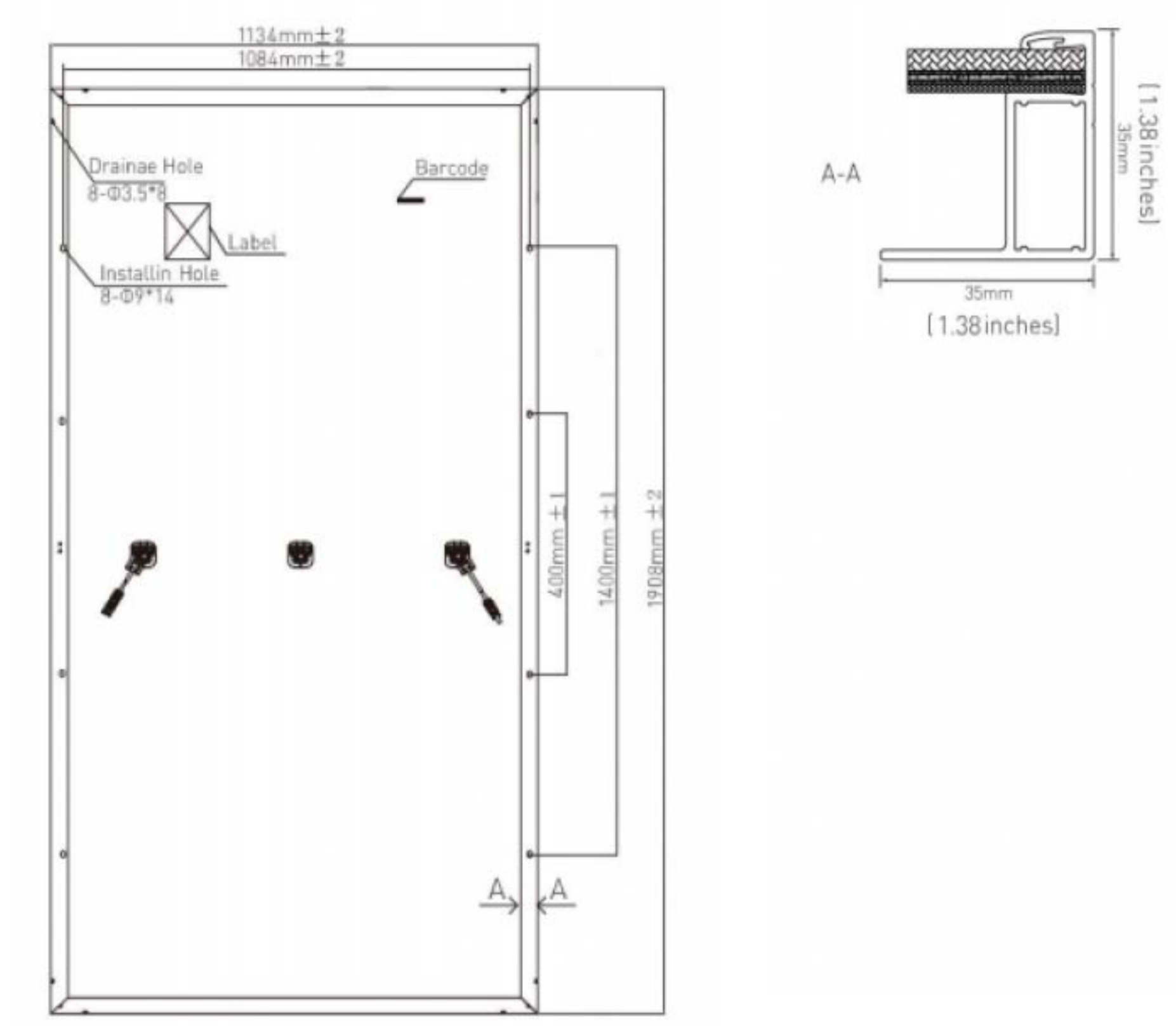
## OPERATING CONDITIONS

Power Tolerance (W)	(0,+4.99)
Maximum System Voltage (V)	1000VDC / 1500VDC
Pmax Temperature Coefficient	-0.36 %/°C
Voc Temperature Coefficient	-0.28%/°C
Isc Temperature Coefficient	+0.05 %/°C
Nominal Operating Cell Temperature	45±2 °C
Operating Temperature	-40°C-+85°C
Maximum Series Fuse	20A

## PACKING CONFIGURATION

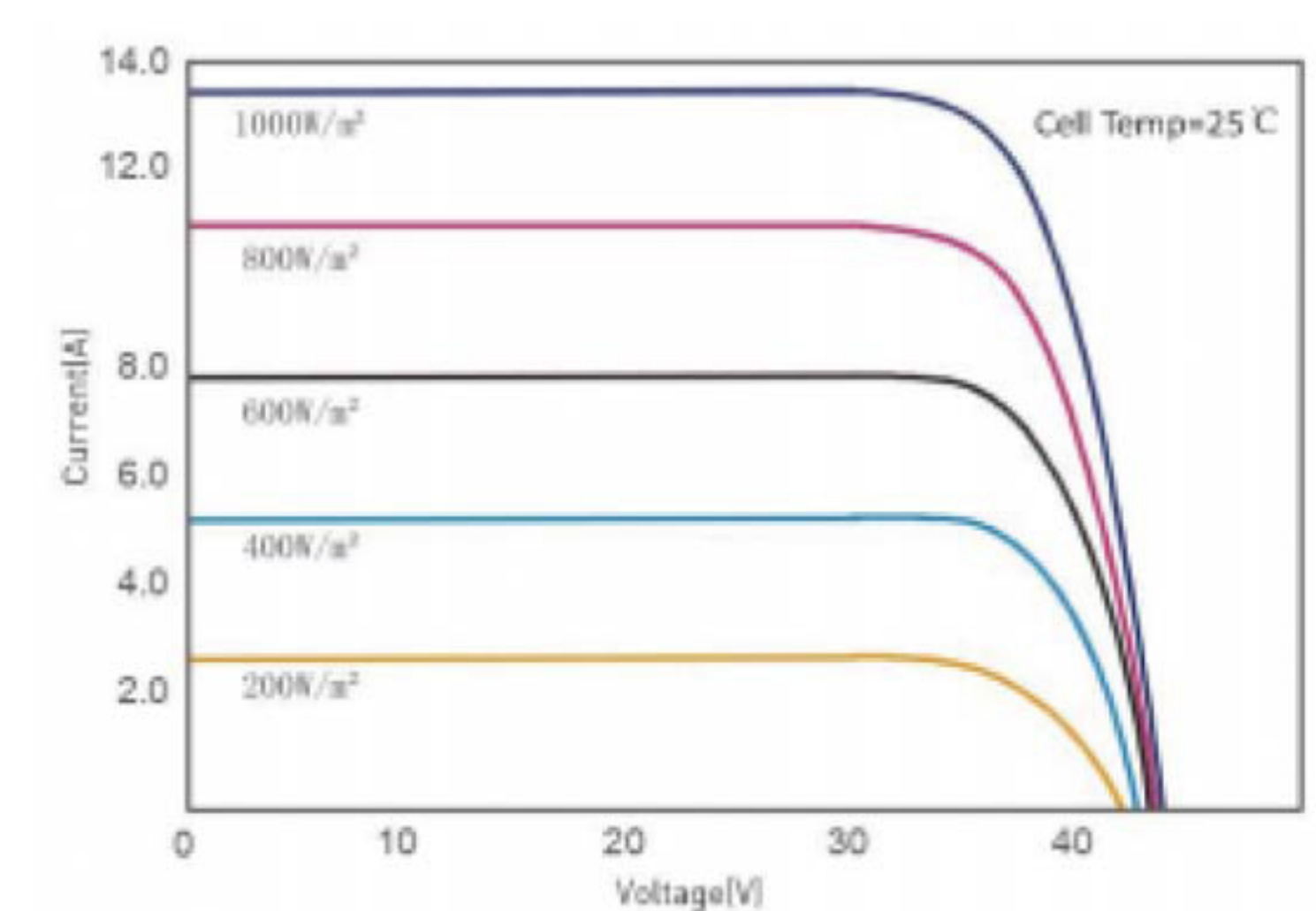
Packaging Material	Wooden Pallet/Carton
Quantity/Pallet	31pcs/pallet
Quantity/Container	744pcs/40HQ

## Technical drawing(INE-XXX-60MH)



\* All Dimensions in mm.  
 \* The above drawing is a graphical representation of the product.  
 For engineering quality drawings please contact IDEAL NEW ENERGY.

## I-V Curve



I-V/P-V Curve at Different Irradiation (455W)

