



Produktdatenblatt

# Mountingsystem

## Flat roof





## Mountingsystem Flat roof



The EASY product range was developed by our engineers to meet the worldwide requirements of an efficient assembly system.

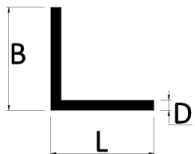
Besides high quality materials and an ergonomic design, the range of short assembly times has been considered as the main criterion.

Oberhauser Bau-Systeme combines high-quality materials, well thought-out construction and customer-oriented thinking to "**efficiency in detail**".

- ✓ All components available separately
- ✓ High quality materials, very long shelf life cycles
- ✓ Stable construction, designed for high load
- ✓ Short assembly times, thanks to EASY system
- ✓ Universally applicable

## System components

A fastening element is selected depending on the roof covering. The inclination angle of the elevation is specified by the customer, the fastening distances result from the static conditions on site and/or from the fastening points of the roof substructure.



### Angle profile 40x40x4

<b>Item-Nr.:</b>	<b>940404W</b>
Dimension:	L: 40mm B: 40mm D: 4mm
Material:	Aluminium EN AW 6060
Unit:	1 lfd



### Hexagon Head Screw M10x20 DIN933

<b>Item-Nr.:</b>	<b>81020</b>
Dimension:	10 x 20 mm
Material:	Stainless Steel A2
Unit:	100 pcs.



### Hexagonal Nut with Serration M10 DIN 6923

<b>Item-Nr.:</b>	<b>910MS</b>
Dimension:	10mm
Material:	Stainless Steel A2
Unit:	100 pcs.

### Trapeze EASY



<b>Item-Nr.:</b>	<b>3350THALU</b>
Dimension:	40mm x 10mm
Material:	Aluminium EN AW 6060
Unit:	1 pcs.

### Hanger Bolt for Wood 10x200 (Standard)



<b>Item-Nr.:</b>	<b>4200</b>
Dimension:	10mm x 200mm
Material:	Stainless Steel A2
Unit:	1 Stk.
Further hanger bolts for wood available on request (Project related)	

### Hanger Bolt for Steel 8x200 (Standard)



<b>Item-Nr.:</b>	<b>4200S</b>
Dimension:	8mm x 200mm
Material:	Stainless Steel A2
Unit:	1 pcs.
Further hanger bolts for steel available on request (Project related)	

### Standing Seam Clamp



<b>Item-Nr.:</b>	<b>340501005</b>
Dimension:	100mm x 4mm
Material:	Stainless Steel 1.4301
Unit:	1 pcs.

### Round Fold Clamp



<b>Item-Nr.:</b>	<b>3KALZ</b>
Dimension:	57mm x 3mm
Material:	Stainless Steel 1.4301
Unit:	1 pcs.

### „Rib-Roof“ Clamp



<b>Item-Nr.:</b>	<b>3ZAMB</b>
Dimension:	80mm x 3mm
Material:	Stainless Steel 1.4301
Unit:	1 pcs.



### Roof Hook ALU „EASY“

<b>Item-Nr.:</b>	<b>271E</b>
Dimension:	40mm x 10mm
Material:	Aluminium EN AW 6060
Unit:	1 pcs.



### Roof Hook Biber 30x5

<b>Item-Nr.:</b>	<b>2530BI</b>
Dimension:	30mm x 5mm
Material:	Stainless Steel 1.4301
Unit:	1 pcs.



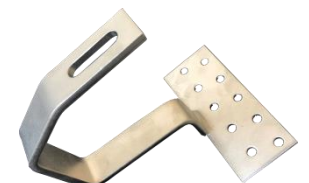
### Roof Hook Biber 40x6

<b>Item-Nr.:</b>	<b>7040</b>
Dimension:	40mm x 6mm
Material:	Stainless Steel 1.4301
Unit:	1 pcs.



### Roof Hook Standard 30x6

<b>Item-Nr.:</b>	<b>7040</b>
Dimension:	30mm x 6mm
Material:	Stainless Steel 1.4301
Unit:	1 pcs.



### Roof Hook Jumbo 30x8

<b>Item-Nr.:</b>	<b>7040</b>
Dimension:	30mm x 8mm
Material:	Stainless Steel 1.4301
Unit:	1 pcs.



### Disk Head Screw 8x100 (Standard)

<b>Item-Nr.:</b>	
Dimension:	8mm x 100mm
Material:	Steel, galvanized
Unit:	1 pcs.
Other disk head screws available on request (Project related)	



### Profile EASY 40x40

<b>Item-Nr.:</b>	<b>103404</b>
Dimension:	40mm x 40mm
Material:	Aluminium EN AW 6060
Unit:	1 pcs.



### Profile EASY 59x59

<b>Item-Nr.:</b>	<b>1036060</b>
Dimension:	59mm x 59mm
Material:	Aluminium EN AW 6060
Unit:	1 pcs.



### Profile EASY 60x100

<b>Item-Nr.:</b>	<b>10360100</b>
Dimension:	60mm x 100mm
Material:	Aluminium EN AW 6060
Unit:	1 pcs.



### Longitudinal Connector Alu EASY universal

<b>Item-Nr.:</b>	<b>70100E</b>
Dimension:	40mm x 100mm
Material:	Aluminium EN AW 6060
Unit:	1 pcs.



### Middle Clamp EASY-Klick

<b>Item-Nr.:</b>	<b>529060</b>
Dimension:	60mm
Material:	Aluminium EN AW 6060   Stainless Steel A2
Unit:	1 pcs.



### End Clamp EASY-Klick

<b>Item-Nr.:</b>	<b>5260V</b>
Dimension:	60mm
Material:	Aluminium EN AW 6060   Stainless Steel A2
Unit:	1 pcs.





# oberhauser

Bau » Systeme

Oberhauser Bau-Systeme GmbH

Rohrbach-Bahnhof 18  
84494 Niederbergkirchen

Tel.: +49 (0) 8635 69392- 0

Fax: +49 (0) 8635 69392-20

E-Mail: [info@oberhauser-pv.de](mailto:info@oberhauser-pv.de)

