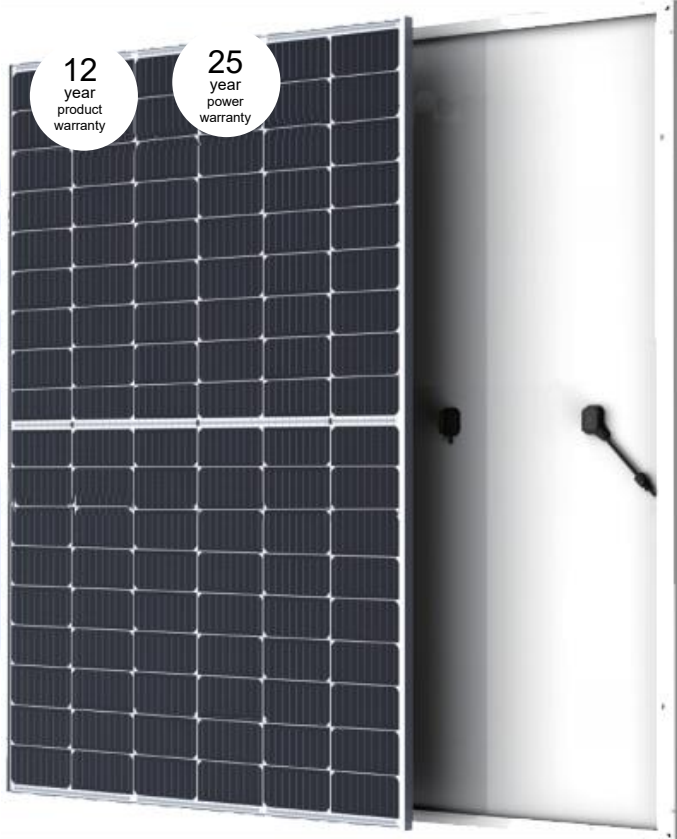


390-415W

Monocrystalline PV Module
LNMH108 Series (182)



MBB & Half Cut cell technology



Guaranteed 0~+5W positive tolerance to ensure power output



Dual stage 100% EL Inspection Warranting Defect-Free Product



Less hot spot & shading effects



Excellent mechanical load 2400Pa and snow load 5400Pa resistance



Lower BOS cost and LCOE

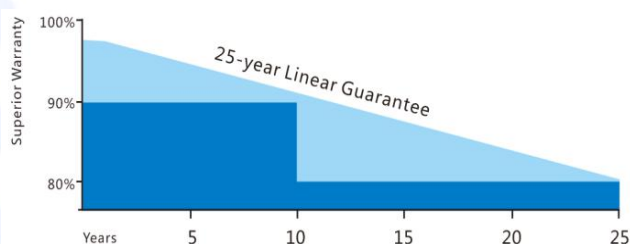


Excellent PID resistance.

Comprehensive Certificates

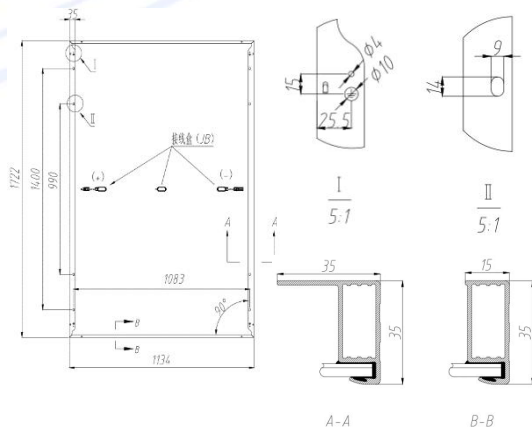
- IEC61215, IEC61730
- TUV, CE
- ISO9001: 2015
- ISO14001: 2015
- ISO45001: 2018

Superior Warranty



Mechanical Specifications @STC

Solar Cells:	Mono
Number of Cells:	108pcs
Module Dimension :	1722×1134×35mm
Weight:	22 kg
Snow/Wind Load:	5400/2400 Pa
Thickness of Glass:	3.2mm
Junction Box:	IP68, 3 Diodes
Connector:	HTC-16, IP68
Length:	(+)290mm /(-)290mm(including connector)



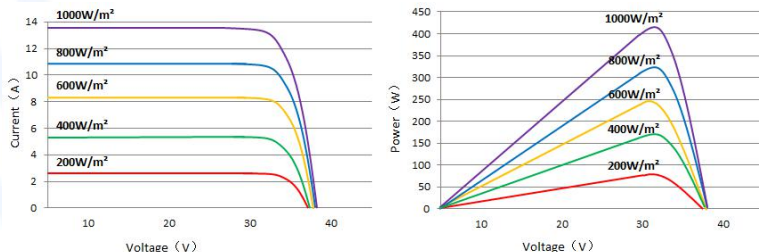
Electrical Specifications @STC

Pmax (W) 0~5W	Umpp (V)	Impp(A)	Uoc (V) ±3%	Isc(A) ±3%	Module Efficiency	Max System Voltage	Max Series Fuse
390	30.24	12.91	36.55	13.36	19.97%	1500V/1000V	25A
395	30.37	13.01	36.74	13.43	20.23%	1500V/1000V	25A
400	30.56	13.10	36.87	13.55	20.48%	1500V/1000V	25A
405	30.73	13.19	37.07	13.64	20.74%	1500V/1000V	25A
410	30.90	13.27	37.22	13.74	21.00%	1500V/1000V	25A
415	31.07	13.36	37.38	13.84	21.25%	1500V/1000V	25A

Temperature Parameter

Temperature Cycling Range:	-40°C ~ +85°C
Norminal Module Operating Temperature:	42±2 °C
Temperature Coefficient of Isc:	0.059%/°C
Temperature Coefficient of Voc :	-0.288 %/°C
Temperature Coefficient of Pmax :	-0.381%/°C

I-V Curve LNMH108-410W



Packaging Configuration

Modules Per Pallet:	31pcs
Modules Per 40 ' HQ:	806pcs

Guarantee

12-year warranty on materials & workmanship
25-year linear power output warranty

※ Specifications subject to technical changes and tests, Linuo Power reserves the right of final interpretation.