

WRS-60LM

POWER RANGE

340W~380W

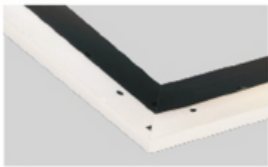
CELL FEATURE

166*166, 23.11%



JUNCTION BOX

High waterproof rating
Protection Degree: IP67
Safety Class: Class II
Rated Voltage: 1500V

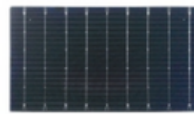


FRAME

Strong mechanical load resistance up to 5400 Pa
Anodic oxidation layer resistant to chemical corrosion
Available in silver and black



5BB



9BB



MBB CELLS

More uniform current collection reduces the current loss of the cell inside panels



Anti-reflective glass

Increases the light absorption, and reduces the power loss caused by the self-cleaning in rain.



Excellent performance in low irradiance

Enable solar panels to generate electricity in the morning, cloudy and rainy days.



PID Resistant

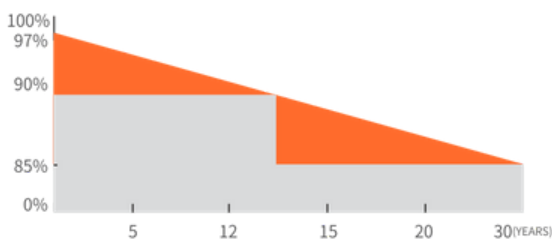
Perfect resistance against PID (Potential Induced Degradation) to secure your investment.

QUALIFICATIONS AND CERTIFICATES



·IEC61215 / · IEC61730

WARRANTY

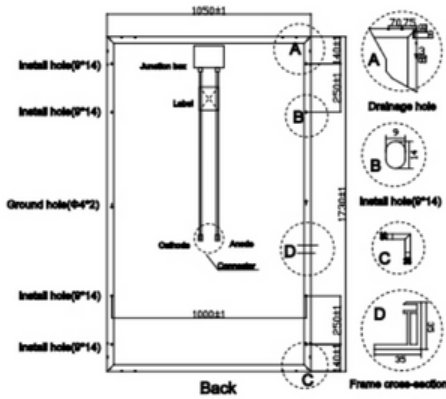
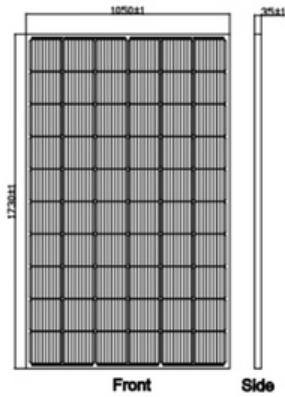


12 YEARS Guarantee on product material and workmanship

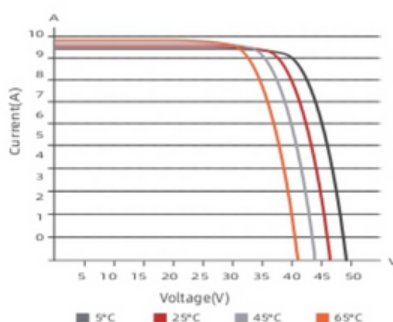
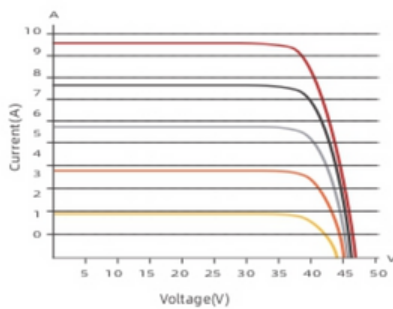
30 YEARS Linear Power output warranty

PV DRAWINGS

Unit:mm



IV CURVE



ELECTRICAL DATA (STC)

Model Type	WRS340-30-M	WRS350-30-M	WRS360-30-M	WRS370-30-M	WRS380-30-M
Peak Power(Pmax)	340.00	350.00	360.00	370.00	380.00
Maximum Power Voltage(Vmp)	33.24	33.44	33.64	33.84	34.04
Maximum Power Current(Imp)	10.23	10.47	10.71	10.94	11.17
Open Circuit Voltage(Voc)	40.32	40.56	40.81	41.05	41.29
Short Circuit Current(Isc)	10.80	11.06	11.31	11.55	11.80
Cells Efficiency(%)	20.67	21.28	21.89	22.50	23.11
Module Efficiency(%)	18.71	19.26	19.81	20.36	20.91

* STC: irradiance 1000 W/m², AM 1.5, and cell temperature of 25° C

ELECTRICAL DATA (NOCT)

Model Type	WRS340-30-M	WRS350-30-M	WRS360-30-M	WRS370-30-M	WRS380-30-M
Peak Power(Pmax)	252.00	260.00	267.00	275.00	282.00
Maximum Power Voltage(Vmp)	31.08	31.27	31.45	31.64	31.83
Maximum Power Current(Imp)	8.11	8.32	8.49	8.70	8.86
Open Circuit Voltage(Voc)	38.04	38.27	38.49	38.73	38.96
Short Circuit Current(Isc)	8.60	8.83	9.01	9.23	9.40

* NOCT: irradiance 800 W/m², AM 1.5, ambient temperature 20° C, wind speed 1 m/s

TEMPERATURE & MAXIMUM RATING

Maximum System Voltage(V)	1500
Maximum Series Fuse Rating(A)	20
Power Tolerance	0 ~ +3 %
Pmax Temperature Coefficients(W/°C)	-0.370 %
Voc Temperature Coefficients(V/°C)	-0.286 %
Isc Temperature Coefficients(A/°C)	+0.057 %
NOCT Nominal Operating Cell Temperature(°C)	45±2
Operating and Storage Temperature(°C)	-40 ~ +85

MECHANICAL CHARACTERISTICS

Cell Type	166x166 Mono
No. of Cells	60(6x10)
Dimensions	1730x1050x35
Weight	19.50kg
Front Glass	3.2mm high transmission, low iron, tempered glass
Frame	Anodized Aluminium Alloy
Junction box	IP65/IP67
Output cables	4mm ² cable 90cm+mc4
MaxWind Load/Snow Load	2400Pa/5400Pa

PACKING WAY

20FT container	6 Packages/ 180pcs
40HQ containe	26 Packages/780PCS

WARIS ENERGY SRL

Italy- Via di Vittorio, 19, 38068, Rovereto (TN)
 Germany- Im Speitel 9, 76229, Karlsruhe
 Turkey- Mimarisan OSB. 15. Can No:8, Melikgazi

EMAIL: info@waris-energy.com

Tel: 0039 -0464-973892