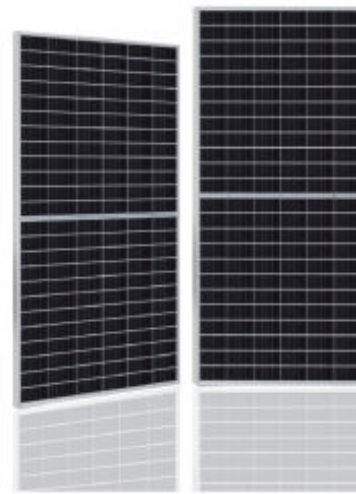
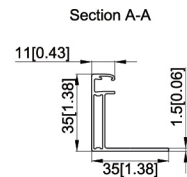
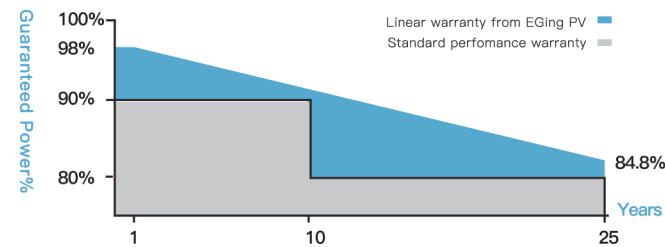


PRODUCT INTRO

AfMb Series


MONO CRYSTALLINE SOLAR MODULE

430W~450W




QUALITY GUARANTEED

- ① Linear output power guaranteed
- ② 10 years product warranty
- ③ 25 years linear power output




High Efficiency

Advanced solar cell technology ensures the high module efficiency up to 20.7%.




Positive Power Selection

Module will generate power selection of 0 to +5W.




Strong Load Capacity

Module is capable to withstand 2400Pa wind loads and 5400Pa Snow loads.



Reliable quality

Module is manufactured in accordance with international quality standards ISO9001



Higher Weatherproof Rating

J-Box performs module with an environmental protection rating to IP68.

MODULE CHARACTERISTICS

Models	GEP-AfMb430M	GEP-AfMb435M	GEP-AfMb440M	GEP-AfMb445M	GEP-AfMb450M
	GEP-AfMb430MH	GEP-AfMb435MH	GEP-AfMb440MH	GEP-AfMb445MH	GEP-AfMb450MH
Maximum Power (Pmax)	430W	435W	440W	445W	450W
Positive Power Selection	0/+5W	0/+5W	0/+5W	0/+5W	0/+5W
Maximum Power Voltage (Vmp)	40.6V	40.8V	41.0V	41.2V	41.4V
Maximum Power Current(Imp)	10.6A	10.67A	10.74A	10.81A	10.87A
Open Circuit Voltage (Voc)	48.4V	48.6V	48.8V	49.0V	49.2V
Short Circuit Current (Isc)	11.32A	11.4A	11.47A	11.54A	11.61A
Module Efficiency	19.8%	20.0%	20.2%	20.5%	20.7%
Operating module Temperature	- 40°C ~ +85°C				
Maximum system(DC) Voltage	DC1000V/1500V(IEC)				
Maximum Series Fuse Rating	25A				
Nominal Module Operating Temperature	42±2°C				
Temperature Coefficients of Pmax	- 0.36%/°C				
Temperature Coefficients of Voc	- 0.304%/°C				
Temperature Coefficients of Isc	+ 0.050%/°C				

MECHANICAL CHARACTERISTICS

Solar Cell	166x83mm 9 Mono crystalline 166x83mm 9BB
Number of cells	144(6x24)
Dimensions	2094x1038x35mm (82.44x40.87x1.38 inches)
Weight	24.5Kg (54.0 lbs)
Front Glass	3.2mm (0.13 inches) front glass
Frame	Anodized aluminum alloy
Junction Box	IP68 rated
Cable	4mm ² solar cable 300mm (11.81 inches) Customized Length
Connector	MC4 PV-XT101.1/Z4S-abcde

PACKING

	20GP	40HC
Pieces per pallet	31	31
pallets per container	5	22
Pieces per container	155	682

STC: irradiance 1000 W/m², module temperature 25°C, AM=1.5; Tolerance of Pmax is within +/- 3%.

