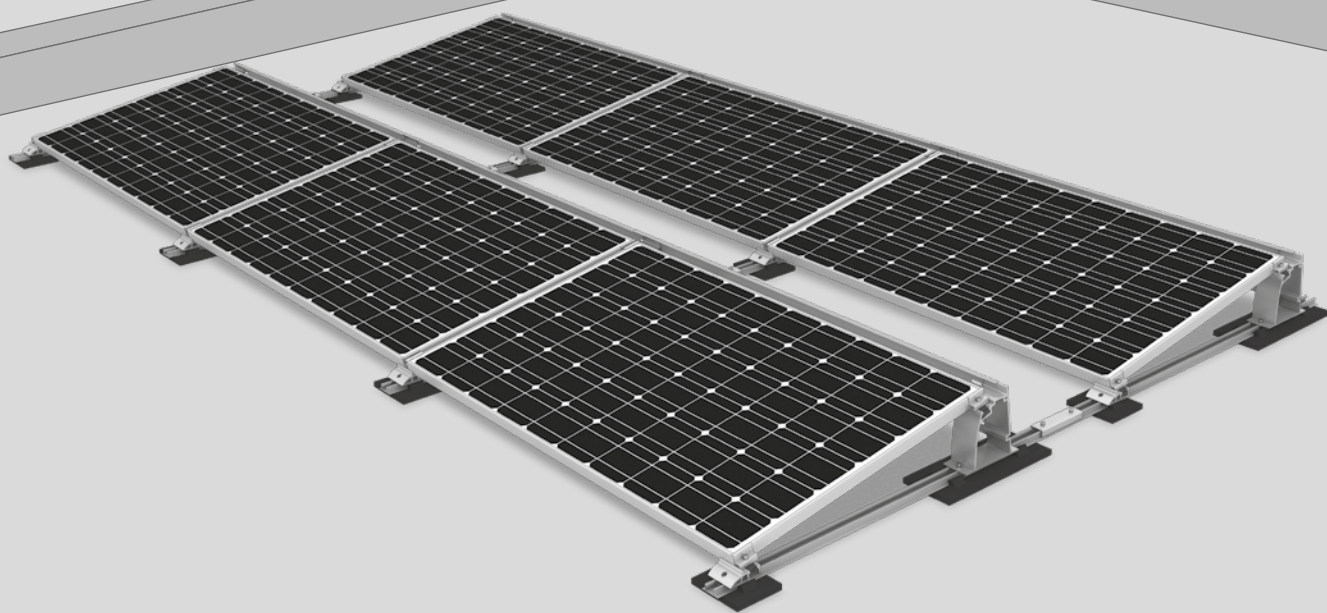
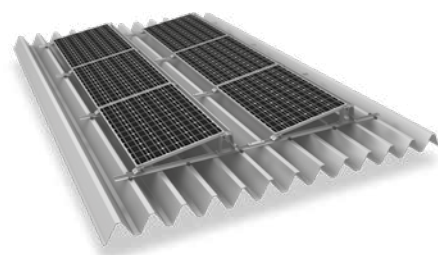


# S-Dome 10° System

## The solution for single-sided elevation

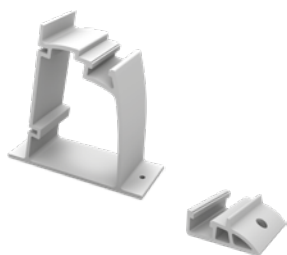


- ▶ A system for structurally challenging roofs with limited ballast options
- ▶ Aerodynamically optimised as a result of wind tunnel testing
- ▶ Quick and easy handling
- ▶ Also available as a short rail system



S-Dome can also be mounted on trapezoidal sheet metal roofs.

## Components



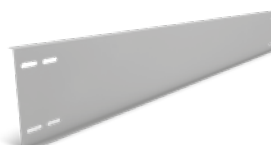
### Dome S1000 and Dome SD

- ▶ Module support elements for one-sided elevations
- ▶ Suitable for module widths of up to approx. 1100 mm



### SpeedRail with building protection mats

- ▶ SpeedRail available as short or long rails
- ▶ Laminated or unlaminated building protection mats, depending on roof covering material



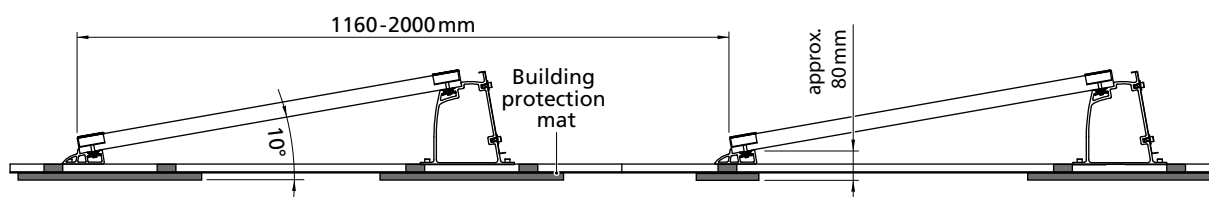
### Windbreaker

- ▶ Wind deflection on the rear of Dome systems
- ▶ Various lengths available



### Ballast Management

- SpeedPorter: For quick and easy ballasting



## Technical data

	S-Dome
Scope of application	Flat roofs < 5° with membrane, bitumen and concrete or gravel roofs; also trapezoidal sheet metal roofs with continuous mounting rails
Fastening type/roof fixture	Stable, with ballasting if necessary; no roof penetration up to 3°
Requirements	<ul style="list-style-type: none"> <li>▶ Permissible module dimensions (L x W x H): 1386-2067 x 950-1100 x 30-50 mm</li> <li>▶ Minimum system size: 2 modules</li> <li>▶ Roof inclination of up to 5°</li> </ul>
Technical specifications	<ul style="list-style-type: none"> <li>▶ Thermal separation after max. 11 m (trapezoidal sheet metal 8.4 m)</li> <li>▶ Minimum clearance to roof edge 600 mm</li> </ul>
Inclination angle	10°
Material	<ul style="list-style-type: none"> <li>▶ Mounting rails, S-Dome, Dome SD, Windbreaker, module clamps, rail connectors: Aluminium EN AW-6063 T66</li> <li>▶ Building protection mat with or without aluminium lining (PUR-bound rubber granules)</li> <li>▶ Small parts: Stainless steel (1.4301) A2-70</li> </ul>