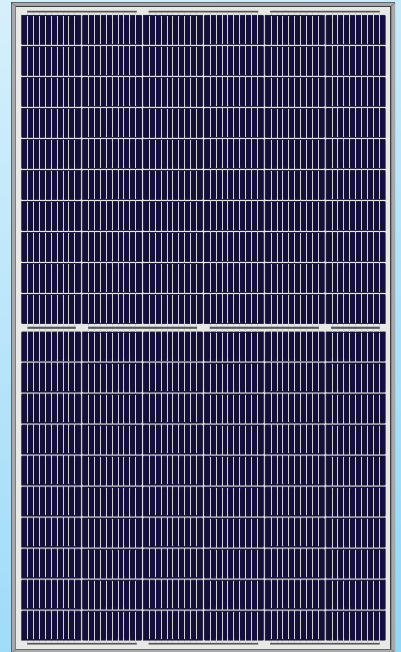


poly HCP60X9
295~315W

**Half-Cell
 High Efficiency
 PV Module**



HIGH EFF.

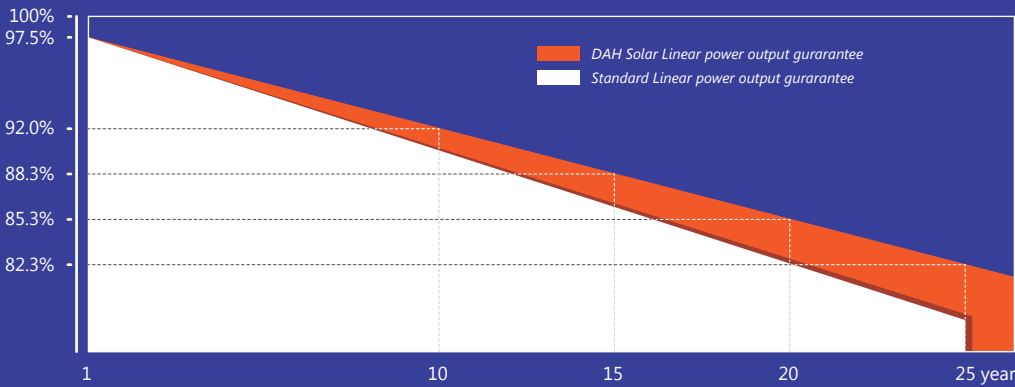


HALF CELL



Quality Guarantee

12-year material & technology warranty
 25-year linear power output warranty



18.67%

Max Module Eff.

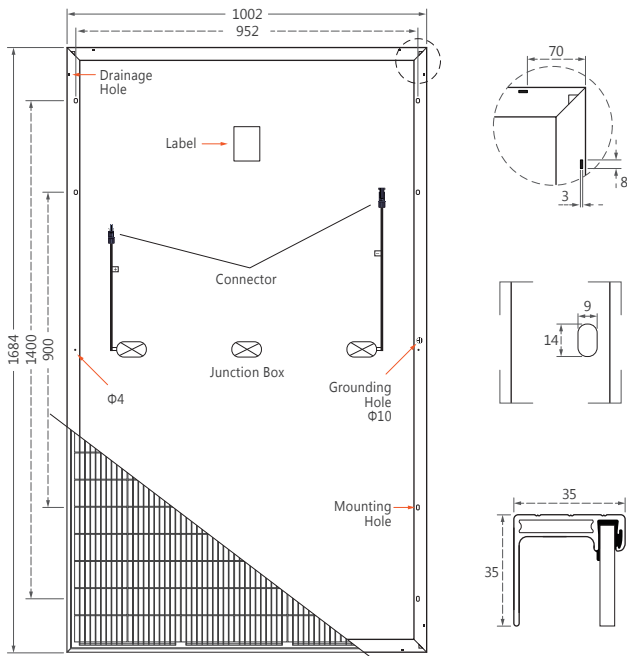
0~+5W

Positive Tolerance

Performance Advantage

- > More Busbars, the Less of Broken and cracking, As the Narrowed Cell Bus Bar Width, the Light Receiving Area and Power are Increased too.
- > Half-Cell technology and back passivation technology, excellent photoelectric conversion efficiency.
- > Excellent low-light power generation performance, even if it is half blocked, there is still 50% power output.
- > Series-parallel combined circuit design, higher output power than conventional PERC.

Design



Mechanical Specification

Cells Type	Poly 158.75×79.375mm
Weight	19kg
Dimension (L×W×T)	1684×1002×35mm
Cable	4.0mm ² ; Portrait: N 400mm/P 300mm, Landscape: N 1200mm/P 1200mm
No.of Cells	120 (6×20)
Glass	3.2 mm High Transmission, Antireflection Coating
Junction box	IP68, 3 Bypass Diodes
Connector	QC4 or MC4 Compatible
Packing	31pcs/pallet, 372pcs/20GP, 858pcs/40HQ

Operating Parameters

Maximum system voltage	1000V/1500V DC
Operating Temperature	-40 ~ +85°C
Maximum series fuse rating	20A
Snow load, frontside	5400Pa
Wind load, backside	2400Pa
Nominal operating cell temperature	45°C±2°C
Application level	Class A

Electrical Characteristics(STC)

Module Type	HCP60X9-295W	HCP60X9-300W	HCP60X9-305W	HCP60X9-310W	HCP60X9-315W
Maximum Power (Pmax)	295W	300W	305W	310W	315W
Open-circuit Voltage (Voc)	39.5V	39.8V	40.1V	40.4V	40.7V
Maximum Power Voltage (Vmp)	32.1V	32.3V	32.6V	32.8V	33.1V
Short-circuit Current (Isc)	9.67A	9.77A	9.85A	9.93A	10.02A
Maximum Power Current (Imp)	9.19A	9.29A	9.37A	9.45A	9.53A
Module Efficiency (%)	17.48%	17.78%	18.08%	18.37%	18.67%
Power Tolerance	0~+5W				
Temperature Coefficient of Isc	0.05%/°C				
Temperature Coefficient of Voc	-0.31%/°C				
Temperature Coefficient of Pmax	-0.38%/°C				
Standard Test Environment	Irradiance 1000w/m ² , Cell temperature 25°C, Spectrum AM1.5				

Electrical Characteristics(NOCT)

Module Type	HCP60X9-295W	HCP60X9-300W	HCP60X9-305W	HCP60X9-310W	HCP60X9-315W
Maximum Power (Pmax)	223W	227W	236W	240W	245W
Open-circuit Voltage (Voc)	37.2V	37.4V	37.8V	38.1V	38.4V
Maximum Power Voltage (Vmp)	30.4V	30.6V	30.9V	31.1V	31.3V
Short-circuit Current (Isc)	7.80A	7.88A	7.94A	8.00A	8.06A
Maximum Power Current (Imp)	7.34A	7.42A	7.48A	7.54A	7.60A
Standard Test Environment	Irradiance 800w/m ² , Cell temperature 20°C, Spectrum AM1.5, Wind speed 1m/s				