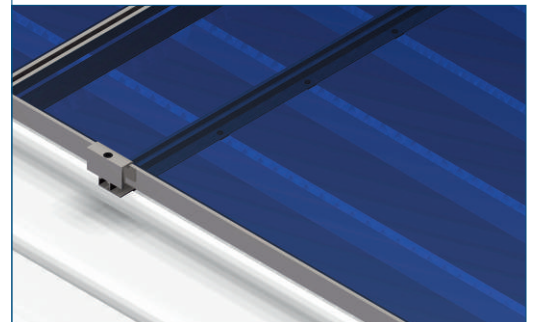


REDUCE

Fastening system ReDuce – Advantages:

- Special fastening system for **trapezoidal corrugated sheet roofs** with cross beam profile sections – suitable for all module types.
- Unbeatably **fast and low-cost** to assemble.
- The protection of the countersunk screws in the pressure plates is achieved by a **special coating** and the correct seating of the threaded plates is guaranteed.
- All fasteners meet **technical construction requirements** or have a **general construction authorization** from the DIBt.
- All fastening elements are made of **stainless steel (A2, 1.4301)**, all profiles are made of **aluminum (AW6063)**.
- **10 years guarantee.**

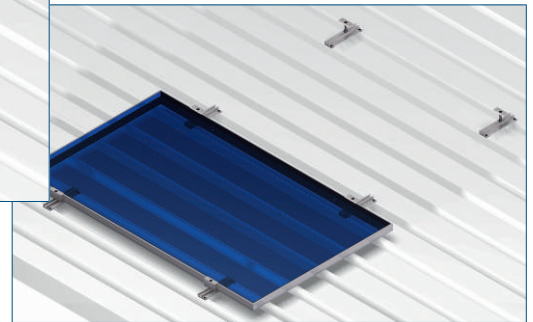
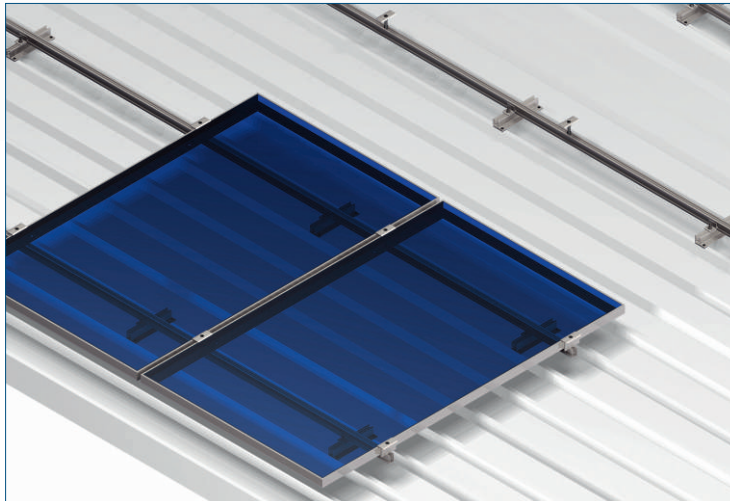
Picture 1: Complete constructions



Picture 2: Detail screen of construction



Picture 3: Clamp plate units with spring



Description of the system:

Two horizontal aluminum C-profiles are riveted into the cladding for each row of modules. To ensure the impermeability of the roof, EPDM seals are glued and water-tight rivets are used between the rails and the roof cladding.

The modules, equipped with anti-slip elements, are laid onto the two module rails and attached at four points with wide pressure plate units. Many module manufacturers recommended this "hanging" system technology. The module rows end with end clamp units on both sides. They are available to fit each frame height. Laminate clamps are available as an option.

Hammerhead bolts and nuts are provided for all connections. They can be screwed in at any point.

ReDuce Stick

Two C-profile sections per module that are already completely pre-fabricated and ready for use are screwed onto two raised beads by means of special sheet metal screws. The modules are firmly connected with the sub-structure by means of prefabricated clamping units. The system is available for each frame height. The special benefit is the sparing use of material, which makes the system an affordable and attractive option.

ReDuce Cross

As with the ReDuce Stick system, the profile sections are attached to the trapezoidal corrugated sheet metal roof. Then, a cross rail system is assembled through the use of a claw connection. The selection of the profile rails is oriented to the local conditions (wind, snow, roof angle). The considerable advantage of the system is the outstanding rear ventilation of the modules.

Picture 1: ReDuce-Cross

Picture 2: ReDuce-Stick

Delivery directly to the construction site:

A trouble-free storage management and transport organization guarantees smooth work flows, as well as rapid delivery times with simultaneous flexibility.

We supply the completely fabricated systems directly to the authorized dealer, plumber or private customer - worldwide.

REDUCE

Your authorized dealer: