

SOLAR SERVICES

OUR ENGINEERING OFFICE

FREE TRAINING

an assistance offered on our product to launch your first project (either on-site or via skype).

AN IN DEPTH-STUDY OF YOUR PROJECT

our R&D department can offer you a **custom-made product**. Our expert engagement is to make you an offer within 48 hours.

AN OPTIMIZED STUDY

detailed plans are made to answer all projects requirements, our expertise's will ensure our solution is perfectly adapted to the building site constraints and to all regulatory requirements.

A PRIVILEGED ASSISTANCE

Our team provide an assistance through all needed procedures in particular if your project requires some validation by the Inspection office.

THE SOLAR CLUB SERVICE

As a Dome Solar customer, you can access freely, the SOLAR CLUB SERVICE in order to get some added services and many privileges.

NOTA

📍 | Dome Solar - 3 rue Marie Anderson
44 400 Rezé

☎ | Tél. +33 (0)2 40 67 92 92

✉ | info@dome-solar.com

www.dome-solar.com

OUR PARTNERS

HÉLIOS B²

TRAPEZOIDAL SHEET
METAL AND SANDWICH
PANEL

PITCHED ROOFS RANGE

EB SOLAR

FIBRO SOLAR

HELIOS B²

ITAL SOLAR

KOGYSUN +

KOGYSUN i+

RB SOLAR

Document printed in France, with vegetable inks, on paper from sustainably managed forests, by Goubault Imprimeur certifié ISO 14001. DANZÉ®



DOME
SOLAR
PHOTOVOLTAIC MOUNTING SOLUTIONS

THE SOLUTION

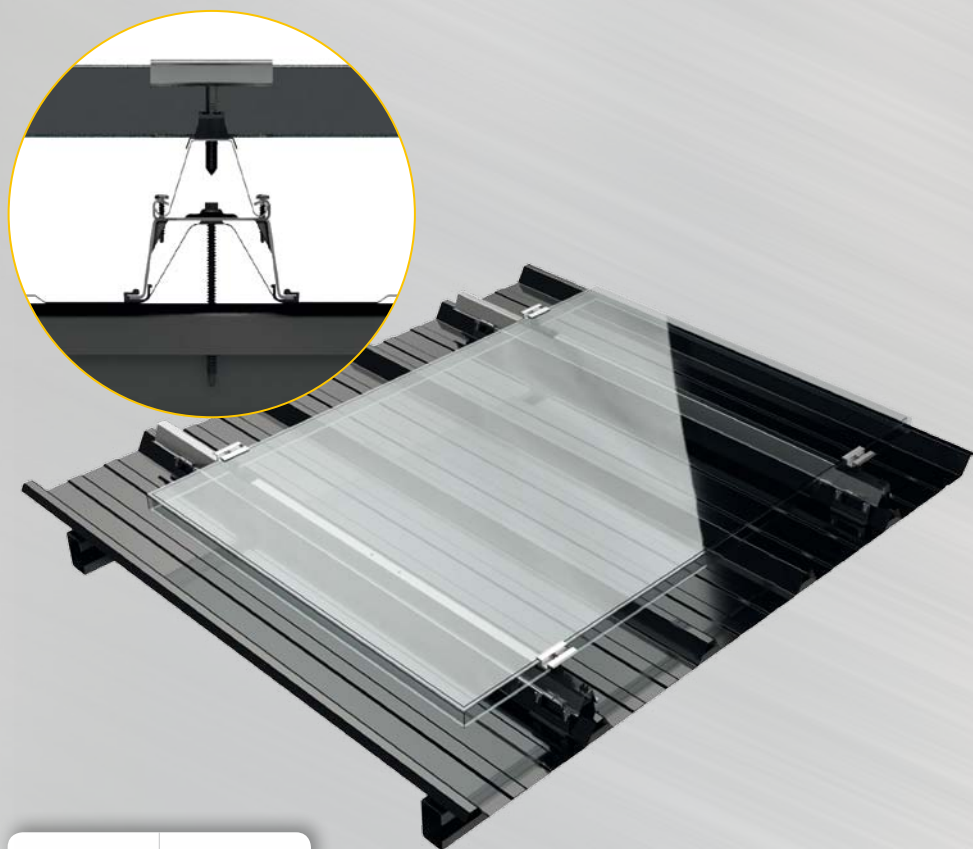
HÉLIOS B² allows a simple and fast installation of a photovoltaic generator on pitched roof (partial or total) with fixation into the purlin.

QUALITY

Robust and reliable solution whose forces are taken up by the supporting structure thanks to the fixing into the purlin.

SIMPLICITY

Fixing has never been so fast and easy (only 3 components!). Universal clamps for all types of module thicknesses (31 to 50 mm).



HÉLIOS B²

TECHNICAL CHARACTERISTICS

USE CONDITIONS

New or renovated roof, with total or partial covering
Purlin distance: 2 m on 0.75 steel deck and on sandwich panel and 1,8 m on 0.63 steel deck (possibility of making a calculation note)

TYPE OF SUPPORT

Standard steel deck and sandwich panel

MODULE POSITION

Landscape mode

MATERIALS

Aluminum and steel

SYSTEM WEIGHT

2 kg/m² excluding the module and the steel deck (or the sandwich panel)

SUPPORTING STRUCTURE

Metal or wood frameworks

SYSTEM COMPONENTS

Steel rail, steel rail support + EPDM joint and aluminum clamp

OPTIONS

Module Grounding Connector

ETN

Assessment
of New
Techniques

ATec

Technical
Evaluation

MADE IN FRANCE

www.dome-solar.com