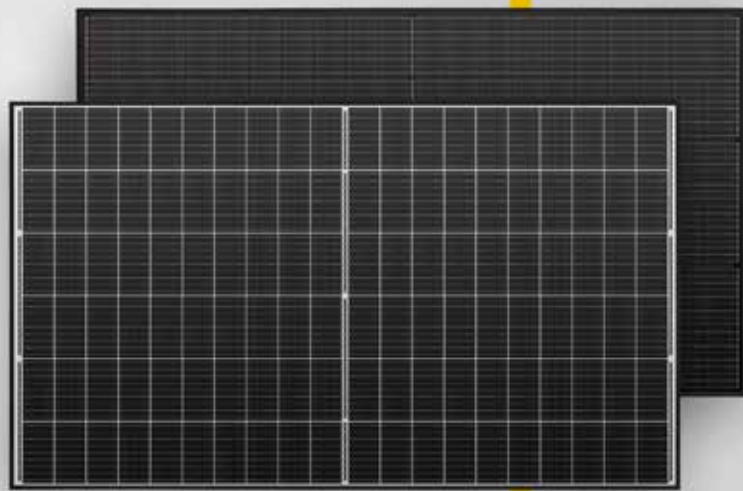




Solar Modules MONOCRYSTALLINE



Mono S2 - Halfcut

330 W • 335 W • 340 W • 345 W

- Half cell modules - High efficiency, high safety, high reliability
- Highly transparent self-cleaning glass
- High performance under low light conditions
- Resistant to environmental influences: Passed salt mist & ammonia test
- 9-busbar-technology - PID Free
- Area utilization up to 204,46 W/m²
- German warranty

Mono S2 - Halfcut


Electrical data under STC (Standard Test Conditions: 1000 W/m², 25 °C, AM 1.5)

Parameter	Symbol	330 W	335 W	340 W	345 W
Rated power	P_{max}	330 W	335 W	340 W	345 W
Sorting limits of performance		0/+3 %	0/+3 %	0/+3 %	0/+3 %
Voltage	U_{MPP}	33.41 V	33.61 V	33.80 V	34.00 V
Open circuit voltage	U_{OC}	40.94 V	41.14 V	41.35 V	41.56 V
Current	I_{MPP}	9.88 A	9.97 A	10.06 A	10.15 A
Short-circuit current	I_{SC}	10.35 A	10.44 A	10.53 A	10.62 A
Efficiency		19.55 %	19.85 %	20.14 %	20.47 %

Temperature data

Operating temperature		-40 °C ~ +85 °C
Operating humidity		5 ~ 85 %
Power temperature coefficient	$T_k (P_{MPP})$	-0.390 %/K
Voltage temperature coefficient	$T_k (U_{OC})$	-0.295 %/K
Current temperature coefficient	$T_k (I_{SC})$	0.039 %/K

Further information

Number of cells	120 monocrystalline half cells (6 x 20)	
Size of cell	158.75 x 79.375 mm	
Module dimensions	1684 x 1002 x 35 mm	
Type of Frame	Anodized aluminium alloy	
Max. system voltage	1500 V	
Reverse current loading capability	15 A	
Glass thickness	3.2 mm	
Weight	about 19.2 kg	
Module connection	MC4 compatible, 4.0 mm ² , cable length: (+) ≥ 1200 mm, (-) ≥ 1200 mm	
Junction box rating	IP68	
Allowable Hail Load	25 mm iceball with velocity of 23 m/s	
Snow load	5400 Pa $\hat{=}$ 550 kg/m ²	

15-year product warranty, 25-year linear performance warranty according to our additional warranty conditions for solar power modules of the "Mono S2" product series, which we will gladly send you.

Due to the tolerance of the anti-reflective coating, colour differences in the All Black modules may occur.

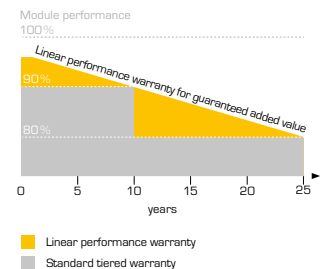
Subject to technical modifications with corresponding follow-up certifications. Errors excepted. Illustration similar.

Packaging Specifications

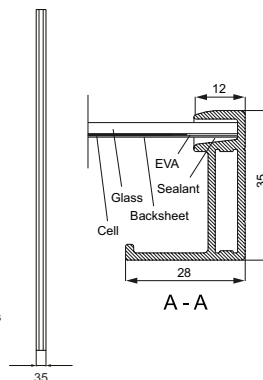
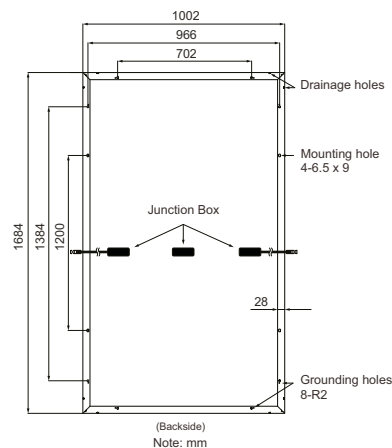
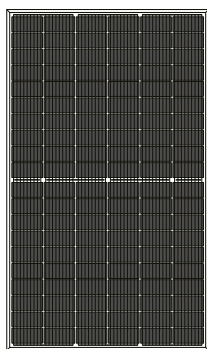
Truck	
Dimension pallet (L/W/H)	172/112/115 cm
Weight pallet	approx. 622 kg
Modules per pallet	30
Modules per truck	840

Shipment

Dimension pallet (L/W/H)	172/112/115 cm
Weight pallet	approx. 622 kg
Modules per pallet	30
Modules per container [40' HC]	780



Mono S2 - Halfcut (half cell module)



Note:
Ensure correct polarity!

Your specialist dealer:

Solar Fabrik GmbH
Hermann-Niggemann-Str. 7
63846 Laufach
Deutschland

Telefon: +49 (0)6093 20770-0
Telefax: +49 (0)6093 20770-99
E-Mail: info@solar-fabrik.de
Internet: www.solar-fabrik.de