

Electrical Performance (STC: AM 1.5, 1000W/m², 25°C)

Module Type	ST280M6-60	ST160M6-36	ST55M6-12	ST25M6-6	ST10M6-2
Maximum Power (Pmax / W)	280	160	55	25	10
Power Tolerance	0~+5W	0~+5W	0~+3%	0~+3%	0~+3%
Maximum Power Voltage (Vm / V)	31.4	18.9	6.34	2.96	1.19
Maximum Power Current (Im / A)	8.92	8.48	8.68	8.45	8.43
Open Circuit Voltage (Voc / V)	38.3	22.9	7.74	3.34	1.34
Short Circuit Current (Isc / A)	9.38	8.92	9.12	8.89	8.85
Module Efficiency (%)	17.11	15.59	12.41	8.91	6.99

System Design

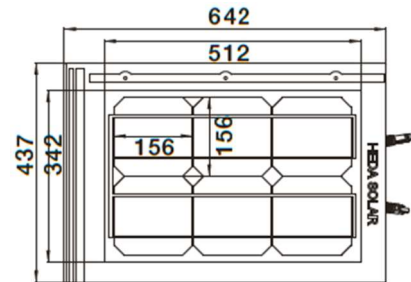
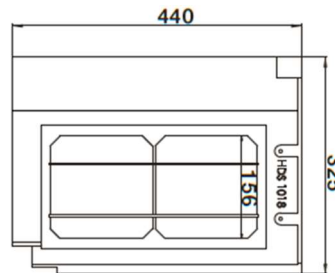
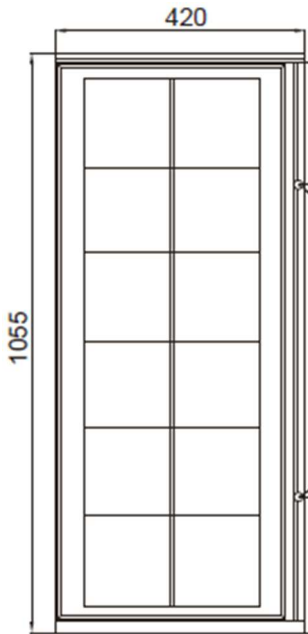
Static Load (Front/Back)	5400Pa/2400Pa
Application class	Class A
Fire safety class (IEC61730)	Class C

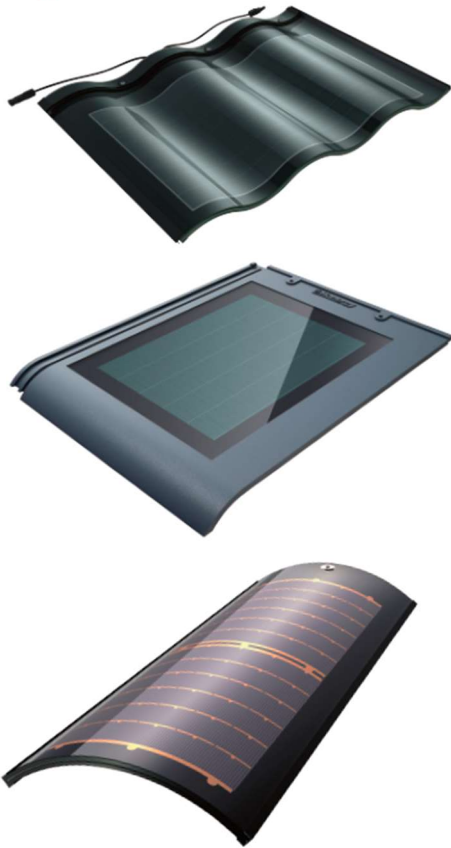
Operation Conditions

Maximum System Voltage (VDC)	1000 (IEC)
Maximum Series Fuse Rating (A)	20
Operating Module Temperature (°C)	-40 to +85

Mechanical Properties

Dimensions (L×W×H / mm)	1650×992×40	1532×670×25	1055×420×25	642×437×30	440×325×47
Weight (Kg)	20	13	5.8	5.2	2.5
Sizes of Cells (L×W/mm)	156×156	156×156	156×156	156×156	156×156
No. of Cells (pcs)	60 (6×10)	36 (4×9)	12 (2×6)	6 (2×3)	2 (1×2)
Sizes of Junction box cable (mm ² /mm)	4 / 900	4 / 900	4 / 700	2.5 / 600	2.5 / 350





Electrical Performance (STC: AM 1.5, 1000W/m², 25°C)

Module Type	ST30CIGS	ST13.4CIGS	ST12CIGS
Maximum Power (Pmax / W)	30	13.4	12
Power Tolerance	0~+3%	0~+3%	0~+3%
Maximum Power Voltage (Vm / V)	8.6	5.4	3.3
Maximum Power Current (Im / A)	3.50	2.50	3.70
Open Circuit Voltage (Voc / V)	10.6	7.8	4.0
Short Circuit Current (Isc / A)	4.00	2.70	4.20
Module Efficiency (%)	8.46	7.13	6.66

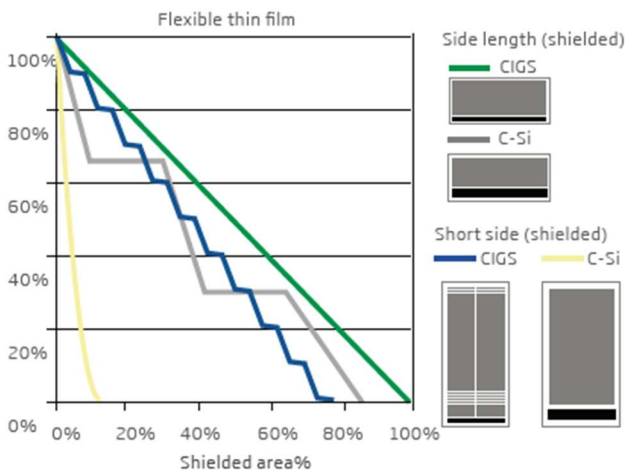
System Design

Operation Conditions

Static Load (Front/Back)	5400Pa/2400Pa	Water Proofing Rate	IP65
Application class	Class A	Anti-hail Rate	4
Fire safety class (IEC61730)	Class C	Operating Temp. (°C)	-40 to +85

Mechanical Properties

Dimensions (L×W×H / mm)	709×500×41	263×715×68	491×367×37
Weight (Kg)	10	5.8	1.61
Cable connector	MC4	MC4	MC4
Sizes of cable (mm ² /mm)	2.5 / 450	2.5 / 450	2.5 / 450



The raised temperature leads to the decline of conversion rate.

