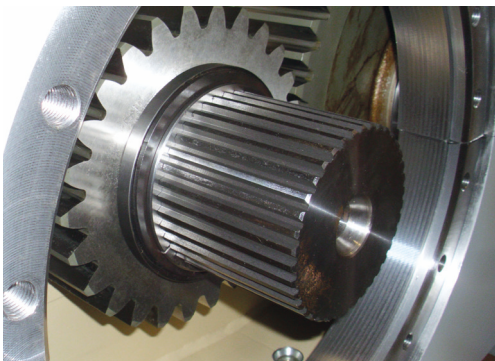
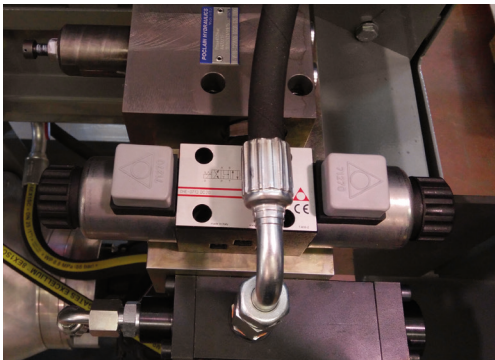


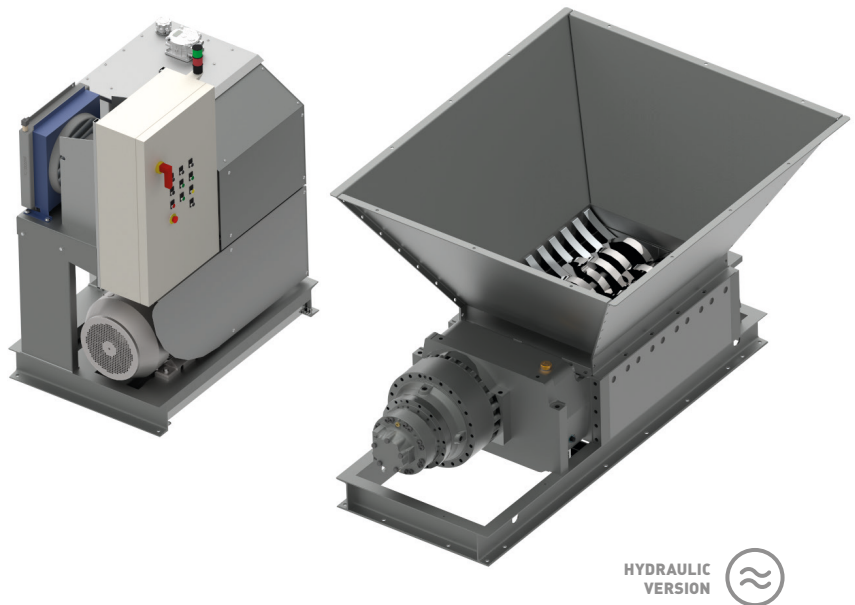
## TWIN-SHAFT HYDRAULIC SHREDDERS

The SH series twin-shaft, hydraulically powered shredder comes in 10 models that can be highly customised to a grinding group level, a loading and unloading system. The available power varies from 37 to 110kW. The control system with constant power regulator allows for very

high cutting torques. The machines are quite strong, adapted to serious, extreme tasks like shredding tyres, metal and all materials requiring high power specification.



**SH 50**



HYDRAULIC  
VERSION 

Model	Power	Cutting surface	Hopper size	Hopper volume	RPM	Total mass	
<b>SH 50</b>	<b>650</b>	37 kW	760 x 650 mm	1665 x 1530 mm	1.1 m <sup>3</sup>	15 - 8 min <sup>-1</sup>	4.250 kg
	<b>850</b>		760 x 850 mm	1665 x 1730 mm	1.2 m <sup>3</sup>		4.390 kg
	<b>1050</b>		760 x 1050 mm	1665 x 1930 mm	1.4 m <sup>3</sup>		4.780 kg
	<b>1300</b>		760 x 1300 mm	1665 x 2180 mm	1.6 m <sup>3</sup>		5.260 kg
<b>SH 100</b>	<b>1300</b>	75 kW	956 x 1300 mm	1945 x 2280 mm	2.5 m <sup>3</sup>	14.4 - 8.6 min <sup>-1</sup>	10.200 kg
	<b>1500</b>		956 x 1500 mm	1945 x 2480 mm	2.8 m <sup>3</sup>		10.880 kg
	<b>1900</b>		956 x 1900 mm	1945 x 2880 mm	3.1 m <sup>3</sup>		12.480 kg
<b>SH 150</b>	<b>1300</b>	110 kW	956 x 1300 mm	1945 x 2280 mm	2.5 m <sup>3</sup>	14.4 - 8.6 min <sup>-1</sup>	11.300 kg
	<b>1500</b>		956 x 1500 mm	1945 x 2480 mm	2.8 m <sup>3</sup>		11.980 kg
	<b>1900</b>		956 x 1900 mm	1945 x 2880 mm	3.1 m <sup>3</sup>		13.580 kg