

# 80 XT-TR

FEATURES	100-80	150-80	
Version	XT	XT	TR
Motor power (kW) 400V	110 (132)	132 (160)	90
Feeding opening (mm)	1040x800	1560x800	
Knives / counterknives N°	3-5/2	3-5/2	7/2
Forged wet rotor	6/2	6/2	
Ill counterknife	0	0	
Rotor diameter (mm)	620	620	
Standard screen (mm)	12	12	8
Indicative output (kg/h)	1500-1800	1800-2200	
Rotor speed (rpm)	460	460	
Weight (kg)	9500	11300	
Knives and screen in antiwear execution	0	0	
Traction groups	0	0	
Hopper for pipes and sheets	0	0	x
Wet grinding execution	0	0	x
Fixed discs	0	0	x
Hopper with doors	0	0	
Pneumatic opening of screenholder	0	0	
Level control	0	0	
Rotor lock for maintenance	0	0	
Sensor for belts slippage	0	0	
Bearings vibration monitoring	0	0	
Chamber temperature monitoring	0	0	
Discharge with suction group on floor	0	0	

0 = optional x = not available



Visit our test room in Cologno Monzese.  
Over than 15 granulators ready for your test.

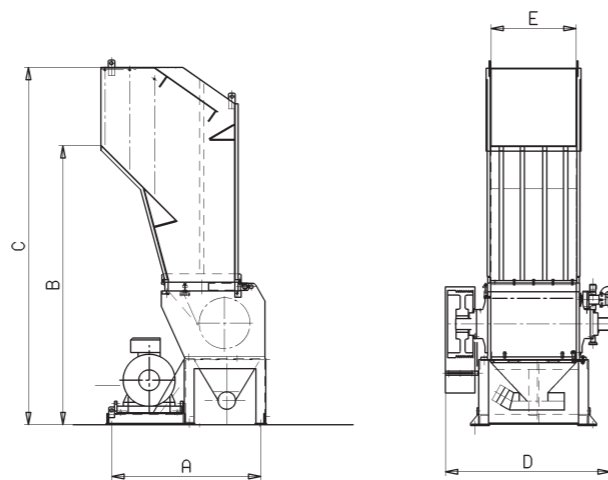
info@giannirusconi.it

# 80 XT-TR



# SERIE

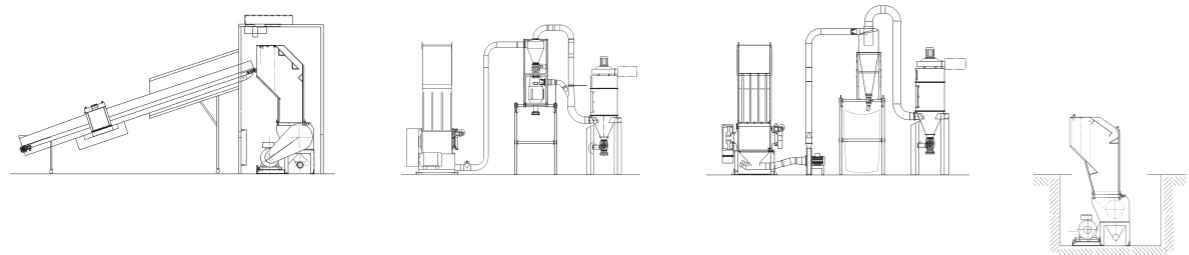
TYPE	A	B	C	D	E
100-80 GR	1910	2970	4050	2000	1034
150-80 GR/TR	2150	3100	4150	2604	1540



© TRIA S.p.A. - ED. 09.2013

# SERIE

ACCESSORIES | conveyor belt & box | LT depowdering system | suction group and filtering system | granulator into a pit



Your recycling needs. Our grinding solutions.

TRIA Italy  
www.trioplastics.com

TRIA America  
TRIA Brazil

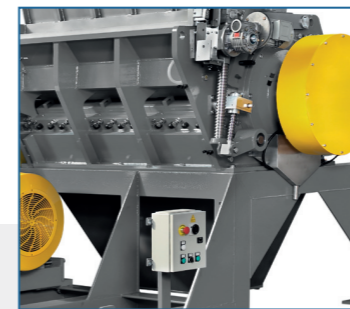
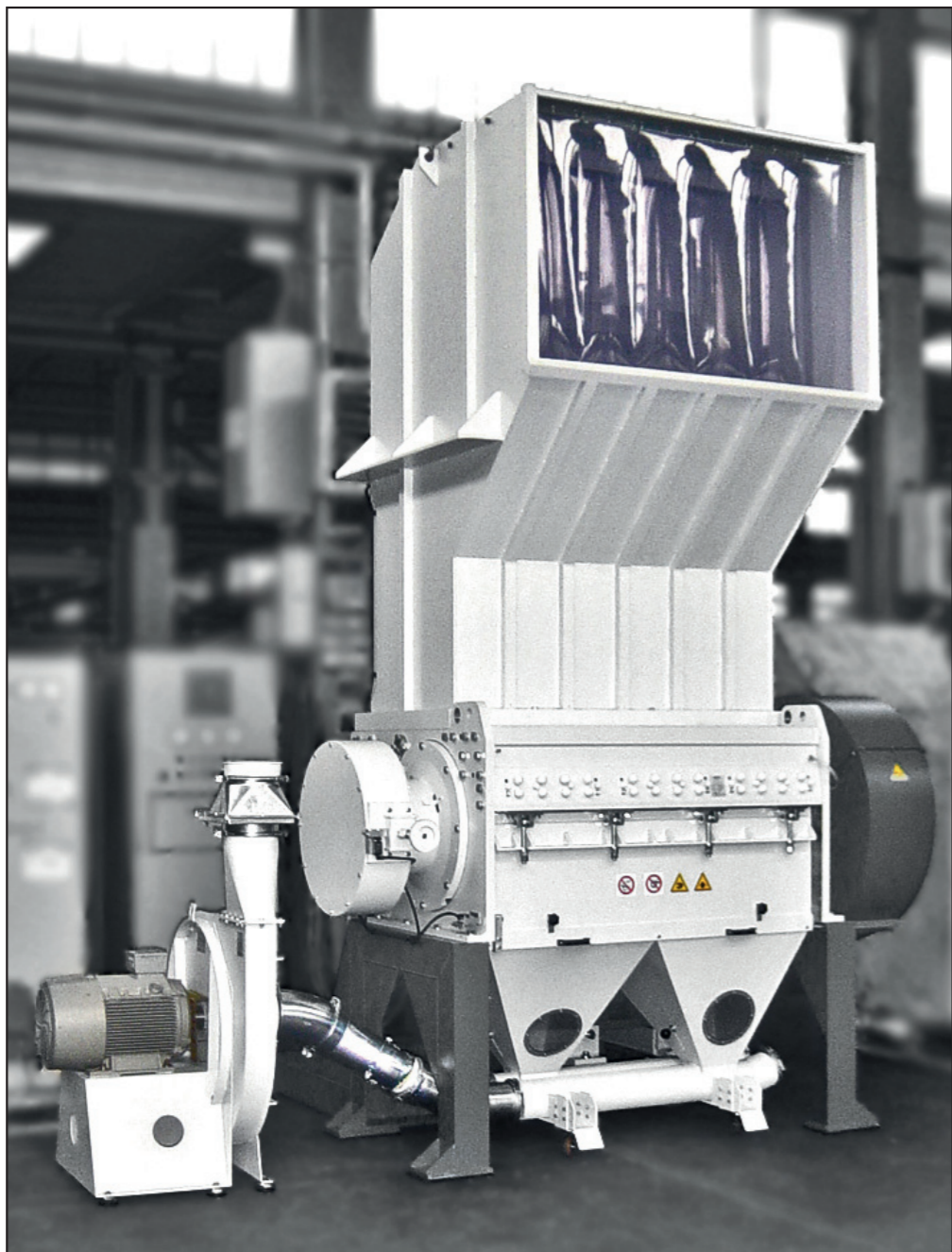
TRIA China  
TRIA Germany



Your recycling needs. Our grinding solutions.

**VERSION GR** granulators dedicated to the recovery of heavy and bulky scraps: sprues, blocks, film rolls or full sheet, film or bottles in PET, in great quantities even dirty.

**VERSION TR** granulators equipped with traction groups for the in-line and off-line grinding of film, plates and thermoformed sheets.



Motorized jack for hopper opening, electric control panel on board



Rotor lock device for maintenance



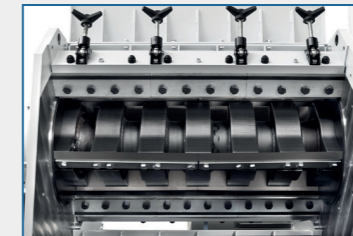
Keys for the fixing of motor pulley and flywheel  
Pulley and flywheel manufactured as per drawing due to high inertia



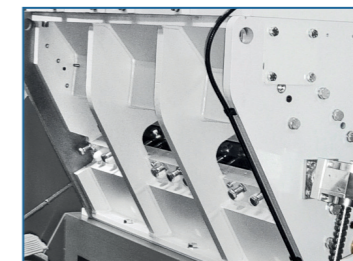
Rotary discs integral with the rotor and rings  
Discs fixed to the chamber (optional)



3 or 5 knives rotor with scissors-cutting configuration



7 knives rotor with arrow-cutting configuration



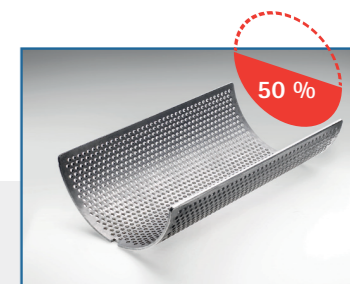
Grinding chamber assembled with first traverse in antiwear execution



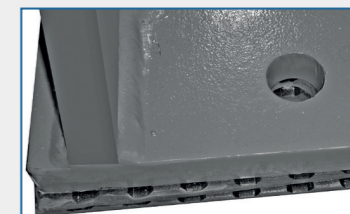
Chamber water cooling



Manual jack for screen holder opening



Screen equal to approx. 50% of the knives rotation length



Basement on vibration dampers



Bench adjustment of knives and counterknives



Swinging roller bearings on pressure compass mounted to the grinding chamber, supports in cast iron

••• Safety devices and circuit in compliance with EEC Directives