

CK51

STRENGTH IN WASTE



THE SPACE SAVER

The CK51 is an excellent solution for working environments with limited space.

This small vertical baler makes a dense bale of up to 70kg which is easily ejected with a trolley.

The minimum floor space and the single phase power supply of this machine makes it very simple to install and to use.

BENEFITS

- _ Compact design / small footprint
- _ Automatic cycle
- _ Bale ejection with trolley
- _ Single phase, easy to install
- _ Easy to operate controls
- _ Cardboard, paper, soft plastic
- _ Low noise powerpack.



CK51 complies with EN16500 - European Standards for vertical balers.

BALER DIMENSIONS

Height	2230mm
Width	830mm
Depth	785mm
Weight	330kg
Feed Opening (H x W)	550mm x 715mm

BALER PERFORMANCE

Compaction Force	4 tonnes
Cycle Time	45 Seconds
Power Supply	1 x 230v, 50Hz
Motor	1.1Kw
Noise Level	60dBA

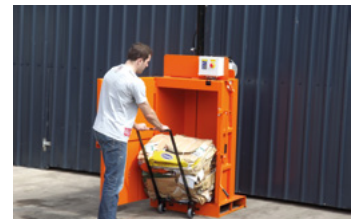
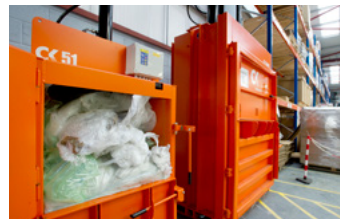
BALE DIMENSIONS

Height	600mm
Width	710mm
Depth	510mm
Bale Weight Cardboard (approx)	50-70kg
Bale Weight Plastic (approx)	60-70kg

CK51

2 x Rolls of Tying Cord	9mm
Bale Ejection System	Trolley

CK International reserves the right to alter specification without prior notice. Bale weights given are guidelines only, actual bale weights depend on operator and material baled.



CK International Ltd.
38a Eglish Road
Dungannon
Co. Tyrone
Northern Ireland
BT70 1LA

T: +44 (0) 28 8775 3966
F: +44 (0) 28 8772 5528
info@ckinternational.co.uk
www.ckinternational.co.uk