

CK500V

STRENGTH IN WASTE



HEAVY DUTY MILL-SIZE BALER

The CK500V is most suitable for premises with substantial waste such as large retail shops, factories and waste recyclers.

The sturdy construction of the CK500V enables users to bale materials such as cardboard, plastic film, hard plastic, E-Waste and PET.

It produces an ideal bale size to maximise transport loads.

BENEFITS

- _ Cord or wire tie option
- _ Large feed opening
- _ Swing door is a cost effective solution
- _ Unique pillar support for pressplate stability
- _ Sturdy construction to bale most materials
- _ Produces 500kg bale of cardboard
- _ Bale full indicator.



CK500V complies with EN16500 - European Standards for vertical balers.

BALER DIMENSIONS

Height	3160mm
Width	1885mm
Depth	1105mm
Weight	Approx 1900kg
Feed Opening (H x W)	610mm x 1185mm

BALER PERFORMANCE

Compaction Force	50 tonnes
Cycle Time	55 seconds
Power Supply	3 x 415V, 50Hz
Motor	7.5kW
Noise Level	70dBA

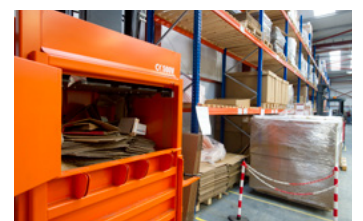
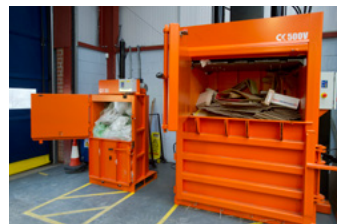
BALE DIMENSIONS

Height	1120/1170mm
Width	1270mm
Depth	770mm
Bale Weight Cardboard (approx)	Up to 500kg
Bale Weight Plastic (approx)	Up to 520kg

CK500V

4 x Steel Galvanised Wires	3mm dia., 3.9m long
or 4 x rolls of tying cord	12mm
Bale Ejection System	Mechanical

CK International reserves the right to alter specification without prior notice. Bale weights given are guidelines only, actual bale weights depend on operator and material baled.



CK International Ltd.
38a Eglish Road
Dungannon
Co. Tyrone
Northern Ireland
BT70 1LA

T: +44 (0) 28 8775 3966
F: +44 (0) 28 8772 5528
info@ckinternational.co.uk
www.ckinternational.co.uk