

CK500W

STRENGTH IN WASTE



EXTRA LARGE FEED OPENING FOR MILL SIZE BALES

The CK500W has got an extra large feed-opening of 1.4 metres. This simplifies the baling of bulky materials.

The Lift-Up Door system allows minimum operating space and automatic door opening after every cycle.

The large bales created are ejected hydraulically by a two hand safety operation.

BENEFITS

- _ Cord or wire tie option
- _ Extra large feed-opening for bulky material
- _ Lift Up Door System for ease of use
- _ Two handed control for safe bale ejection
- _ Unique pillar pressplate for extra stability
- _ Cardboard bales up to 500kg
- _ Bale full indicator.



CK500W complies with EN16500 - European Standards for vertical balers.

BALER DIMENSIONS

Height	3160mm
Width	2165mm
Depth	1105mm
Weight	Approx 2250kg
Feed Opening (H x W)	600mm x 1430mm

BALER PERFORMANCE

Compaction Force	50 tonnes
Cycle Time	55 seconds
Power Supply	3 x 415V, 50Hz
Motor	7.5kW
Noise Level	70dBA

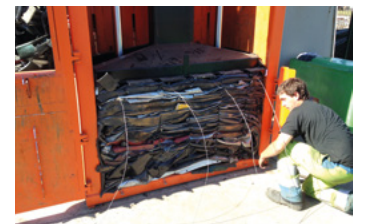
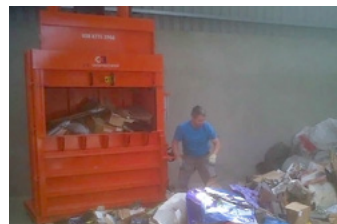
BALE DIMENSIONS

Height	1120mm
Width	1550mm
Depth	770mm
Bale Weight Cardboard (approx)	Up to 500kg
Bale Weight Plastic (approx)	Up to 520kg

CK500W

4 x Steel Galvanised Wires	3mm dia., 3.9m long
or 4 x rolls of tying cord	12mm
Bale Ejection System	Mechanical

CK International reserves the right to alter specification without prior notice. Bale weights given are guidelines only, actual bale weights depend on operator and material baled.



CK International Ltd.
38a Eglish Road
Dungannon
Co. Tyrone
Northern Ireland
BT70 1LA

T: +44 (0) 28 8775 3966
F: +44 (0) 28 8772 5528
info@ckinternational.co.uk
www.ckinternational.co.uk