

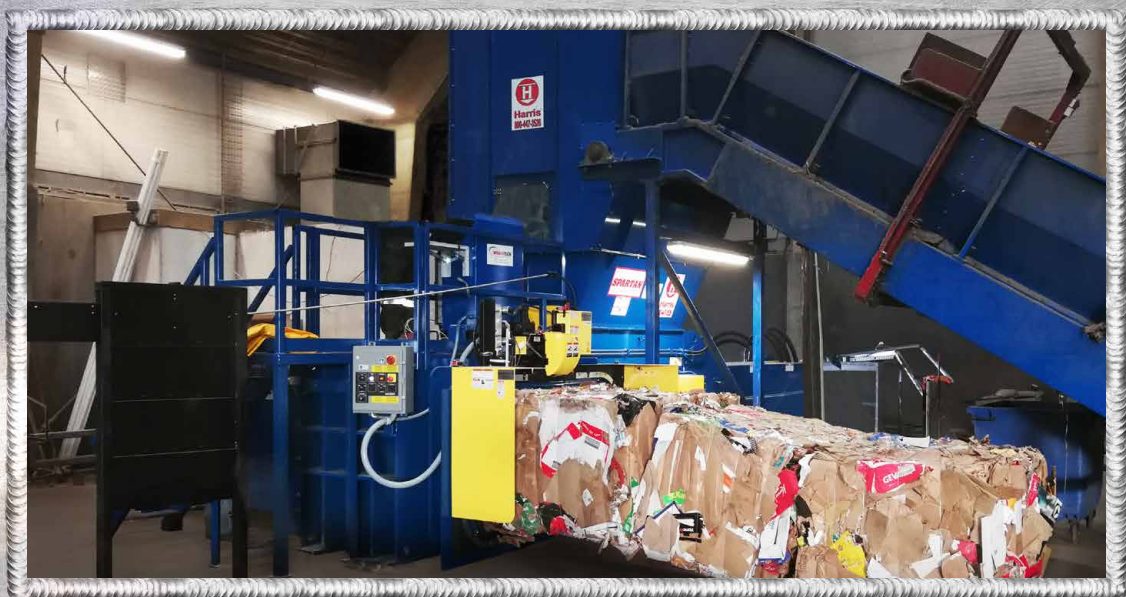


HARRIS

SPARTAN 150 HE

Harris balers are as tough as they come. Built to last and engineered to perform, you can expect the Spartan 150 HE to work like all Harris machines—with strength, efficiency, and dependability that exceeds all expectations. The Spartan 150 HE features include:

- First Two Ram to make an 1100 mm (43 in) x 1100 mm (43 in) bale
- Larger and heavier Bales will load trucks with less bales (28 bales in a sea land container very quickly)
- OCC bales weight up to 2200 pounds
- Bales all paper grades automatically without shredding or fluffing
- Produces High Density Plastic Bales
- Bales Non Ferrous metals and extrusions as well
- Bales solid waste and RDF and can be direct wrapped
- Reduces wire costs per ton
- Strapper or bagger can be used with this baler
- Large feed opening 39 inches wide by 84 inches long
- 5000 PSI hydraulic system allows for lower HP use and less power use

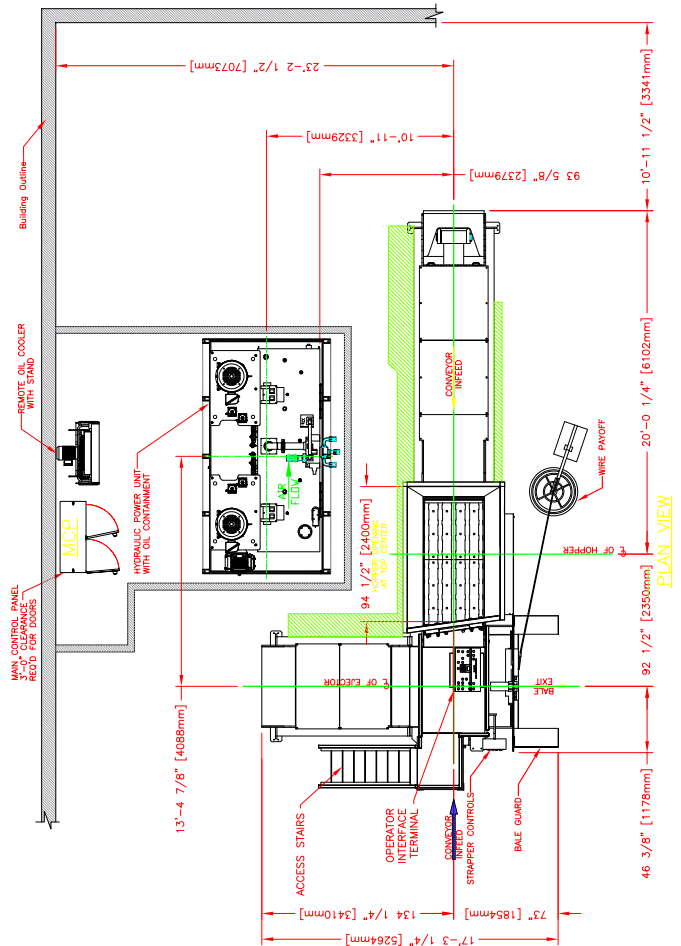




SPARTAN 150 HE SPECIFICATIONS

SPARTAN 150 HE SPECIFICATIONS

MODEL	SPARTAN 150 HE	
HYDRAULIC	Total Force	2 37 Tons (215 metric tons)
	System Pressure	5000 PSI (345 BAR)
	Main Cylinder	11 Inch Bore (279 mm)
	Ram Face Pressure	269 PSI (18.6 BAR)
	Oil Reservoir	1000 Gallons (3875 liter)
	Filtration	3 Micron Replacement High Pressure Filters Accent Model 470 Strapper
ELECTRICAL	Main Motor	Two (2) 75 HP, 1750 RPM @ 60 Hz, 460 Volt, 3 Phase, 60 Hz, TEFC, SMC-3 Soft Start Starting
	Cooler/Strapper Pump Motor	20 HP, 460 Volt, 60 Hz, 3Phase
	Cooler Fan	5 HP, 460 Volt, 60 Hz, 3Phase
	Controls	Allen Bradley with 10 Inch Touch Screen Programmable PLC with Ethernet 24 Volt DC control voltage for safety
	Photocell	Infrared type
STRUCTURAL	Charge Box Opening	39 in W x 84 in L
	Hopper Opening	64 in W x 84 in L
	Length Overall	32 ft - frame only
	Width Overall	17 ft at ejector
	Shear Blade	Knife Steel, Reversible
	Shipping Weight	50 Tons (approx.)
PERFORMANCE	Bale Size Expanded	43 in W x 43 in H x 64 in L
	Bale Volume	68 cubic ft (expanded approx.)
	Cycle Time	16 seconds @ 60 Hz (no load - main cylinder only)



SPARTAN 150 HE MATERIAL	Bale Weight	Density Baled	Output W/O Bale Door Plug Bale Mode
OCC	Up to 2200 lb	Up to 32 lb/ft ³	Up to 20 tph
HI GRADE	Up to 2400 lb	Up to 36 lb/ft ³	Up to 40 tph
UBC	Up to 1670 lb	Up to 26 lb/ft ³	Up to 16 tph
PET	Up to 1800 lb	Up to 28 lb/ft ³	Up to 8.5 tph
TIN CANS	Up to 3140 lb	Up to 49 lb/ft ³	Up to 44 tph
FILM	Up to 2400 lb	Up to 36 lb/ft ³	Up to 12 tph
Solid Waste	Up to 3250 lb	Up to 48 lb/ft ³	Up to 56 tph
RDF	Up to 3250 lb	Up to 48 lb/ft ³	Up to 56 tph

Performance rates, bale weights, and bale densities are subject to moisture content, material pre-bale densities, feed rates, and other variables in baling.

Other options are available and other voltages are available.

As part of our continuing product improvement and quality assurance programs, specifications are subject to change without notice and without incurring responsibility for units previously sold.



HARRIS EQUIPMENT-CORDELE
315 W. 12TH AVE
CORDELE, GA 31015
800.468.5657
229.273.2500

HARRIS EQUIPMENT-BAXLEY
340 JEKYLL RD
BAXLEY, GA 31513
800.447.3526
912.367.4661

HARRIS EQUIPMENT-UNITED KINGDOM OFFICE
UNIT D2 FORMAL INDUSTRIAL PARK
NORTHWAY LANE
TEWKESBURY GLOS GL20 8GY
+44 (0) 1684-254980
info.europe@harrisequip.com

www.harrisequip.com