

Clearly Ahead: The Unicrex Granulator Series

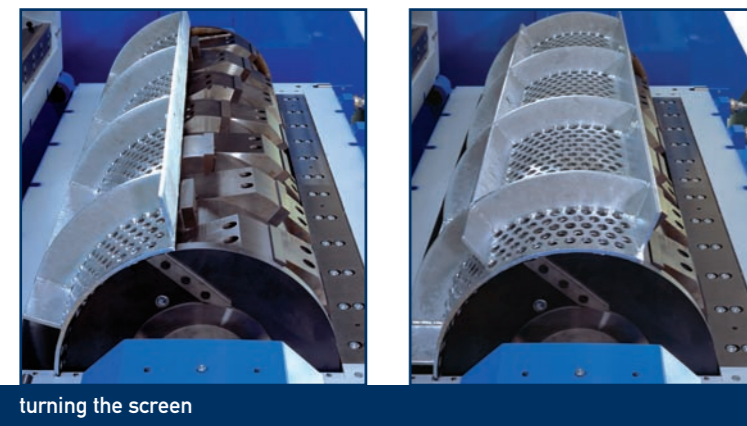
At the push of a button, the series' innovative maintenance drive turns the screen into an upward position from where it can be extracted easily. Rapid screen changes are the result.

The maintenance drive also permits safe turning of the rotor shaft in case of a cutter change, thus offering maximum protection for the operator's health and safety.

By making it unnecessary to remove outlet units, the space between cutter chamber and outlet unit is sealed virtually dust-tight.



maintenance drive



turning the screen

The advantages at a glance:

- maximum service accessibility
- rapid screen change system
- 4-fold use of blades
- easy cutter clearance adjustment
- outboard bearing
- closed materials outlet
- unsuitable materials management via slip clutch
- efficient operation with extremely low down- and maintenance times
- reliable amortisation through robust construction and longevity



	Unicrex U1200	Unicrex U1700	Unicrex U2100
cutter opening (L x W)	1.186 x 750 mm	1.680 x 850 mm	2030 x 1080
rotor diameter	500 mm	600 mm	800
number of rotor cutters	24	48	70
number of stator cutters	2	4	6
total ground area (L x W)	3.500 x 2.600 mm	4.000 x 4.100 mm	4.350 x 4.500
total height	3.400 mm	3.800 mm	4.050 mm
total weight	10.500 kg	20.700 kg	26.500 kg
motor capacity	75/90 kW	132/160 kW	250 kW
rotor speed	280 rpm	240 rpm	240 rpm
screen hole diameter	10...100 mm	10...100 mm	10... 100 mm

Granulation at its Best The Unicrex Granulator Series



bomatic® U1700

bomatic
Umwelt- und Verfahrenstechnik GmbH

bomatic
Umwelt- und Verfahrenstechnik GmbH

No Compromises: User-friendly Construction

The Unicrex granulator is a guillotine shear and works with a rotating shaft above a perforated screen. Material is shredded between rotating and fixed blades until it falls through the screen holes.



cutter chamber can be opened hydraulically

Both cutter chamber and hopper can be hydraulically tilted upwards by 90 degrees which results in maximum service accessibility. Power is transmitted to the rotor shaft by means of a single-stage belt drive, resulting in the highest possible elasticity.

Individual rotor holders, made from hardened special steel, are mounted onto the unique rotor shaft - the heart of all Unicrex granulators.



cutter clearance adjustable from outside

The shaft's bearings are located outside the cutter chamber in order to prevent damage from aggressive materials.

The cutter clearance between rotating and fixed blades can be easily adjusted from the outside.

Fixed and rotating blades can be used four-fold.

Great Performance: Best results for all materials.

Unicrex granulators always deliver optimal results. Constant throughput even at peak loads is achieved by using the granulator's massive belt drive pulley as the inertia wheel rather than the rotor shaft itself. An integrated slip clutch protects against blockages from incorrect charging or unsuitable materials.



tyre granulation



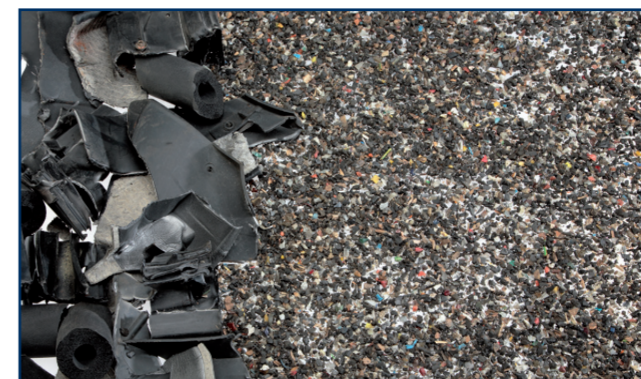
refrigerator granulation



electronic scrap granulation



aluminium granulation



shredder light fraction/product rejects granulation



plastics/household/film granulation

The above images show some selected materials only. We would be happy to advise you on further applications.

