

30 XT-BM

FEATURES	35-30		50-30	
Version	BM	XT	BM	XT
Motor power (kW) 400V	7,5	7,5	7,5	11
Feeding opening (mm)	350 x 300		500 x 300	
Knives / counterknives N°	3/2		3/2	
Rotor diameter (mm)	260		260	
Standard screen (mm)	9		9	
Indicative output (kg/h)	150-220		200-320	
Rotor speed (rpm)	535		535	
Weight (kg)	650		750	
Knives / screen in antiwear execution	o		o	
Soundproof rigid flap	o		o	
Traction groups	x		x o	
Hopper for pipes and sheets	x		o	
Not soundproof execution	o		o	
Hopper for edge trims	x		x o	
Soundproof tunnel for conveyor belt	o		o	
Level control	o		o	
Discharge for hopper loader	o		o	
Discharge with auger screw	o		o	
Discharge with suction group on board	o		o	
Discharge with suction group on floor	o		o	

o = optional x = not available



Visit our test room in Cologno Monzese.

Over than 15 granulators ready for your test.

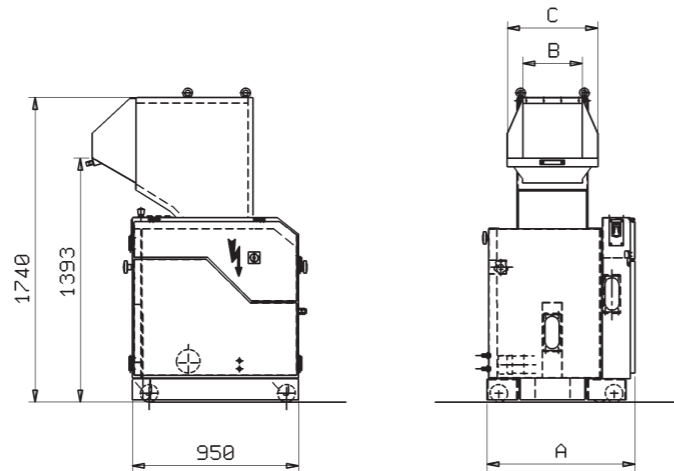
info@giannirusconi.it

30 XT-BM

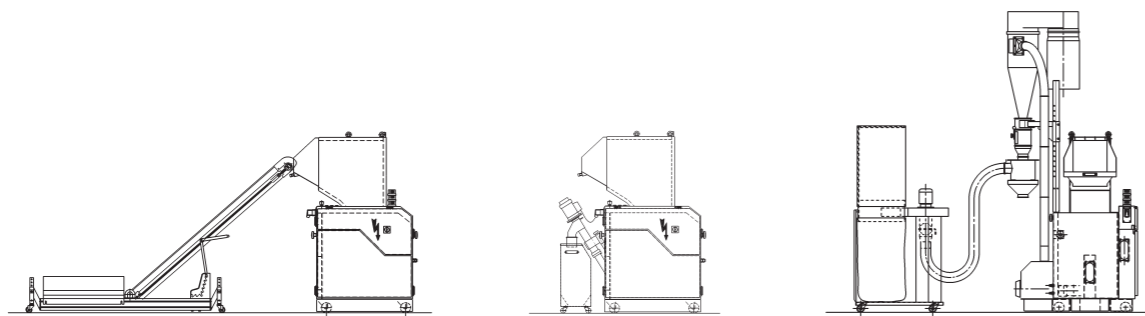


SERIE

TYPE	A	B	C
35-30 XT/BM	795	340	520
50-30 XT/BM	945	490	670



ACCESSORIES conveyor belt auger screw suction group / depowdering and filtering systems



© TRIA S.p.A. - ED 09.2013

SERIE



Your recycling needs. Our grinding solutions.

TRIA Italy  
www.triaplastics.com

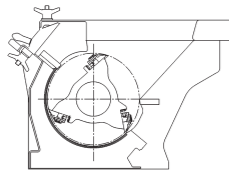
TRIA America  
TRIA Brazil

TRIA China  
TRIA Germany

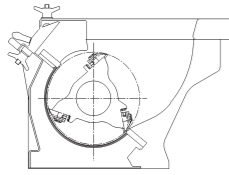


Your recycling needs. Our grinding solutions.

30 XT-BM



VERSION XT granulators dedicated to scraps recovery from rigid or flexible extrusion for small sprues or heavy moulds suitable also for second step grinding of pre crushed pieces.



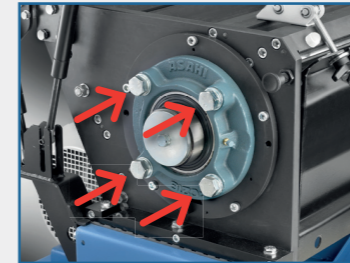
VERSION BM granulators dedicated to scraps recovery from blow moulding: runners, blown pieces, in-line parison at high temperatures. Off-line grinding of preforms and blown pieces. Suitable for moulds or bulky and light thermoformed scraps.



SERIE



Rotary discs integral with the rotor and containment rings



Roller bearings, mounted to the grinding chamber and fixed to the circumference



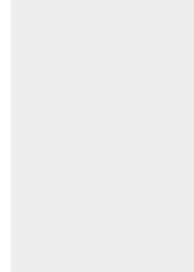
Access without tools to the main maintenance parts



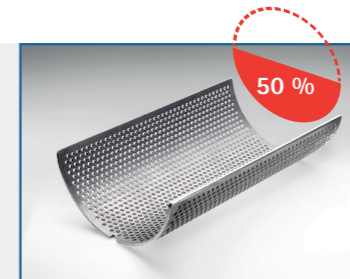
Scissors-cutting configuration



Bench adjustment of knives and counterknives



Hopper opening by gas cylinder



Screen equal to approx. 50% of the knives rotation length



Grinding chamber in anti wear execution



Chamber water cooling



Moving on castors



Integrated electric control panel  
Safety devices and circuit in compliance with EEC Directives

...  
Keys for the fixing of motor pulley and flywheel  
Pulley and wheel manufactured as per drawing due to high inertia